

Premier Collection

METOLIUS PREMIER

Available in 4 Communities

 4 Bedrooms

 3 Bathrooms

 2,095+ Sq. Ft.

 3 Car Garage



T - Traditional, 2 Car



U - Craftsman, 2 Car

V - Farmhouse, 2 Car



- Multi-Gen Downstairs Suite
- Upstairs Bonus Room / Loft
- Gourmet Kitchen
- Kitchen Island with Sink
- Large Corner Kitchen Pantry
- Main Level Guest Suite

- Open Great Room with Gas Fireplace
- Primary Suite with Large Walk-in Closet
- Quartz Countertops throughout Home
- Stainless Steel Appliances
- 9 Foot Ceilings throughout Main Level



www.MtVistaHomes.com

In a continual effort to improve our product, MonteVista Homes reserves the right to change product design, features, materials, floor plans, specifications, prices and terms without prior notice. Square footage stated or implied are approximate. Images may be representative of future home and show what's possible not what's included. Seller is a licensed real estate broker in the State of Oregon. CCB#203709



Premier Collection

METOLIUS PREMIER

Available in 4 Communities

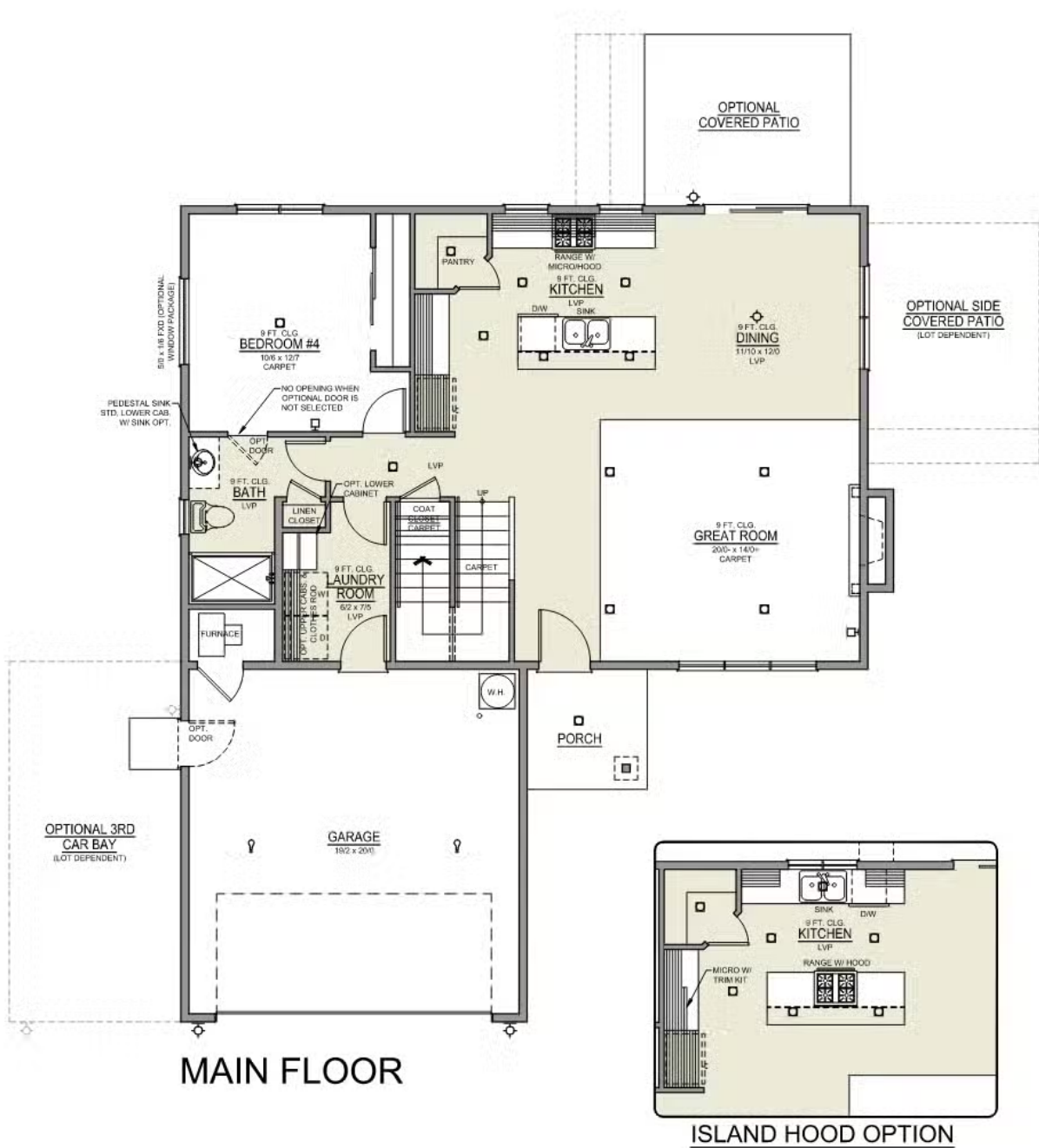
 4 Bedrooms

 3 Bathrooms

 2,095+ Sq. Ft.

 3 Car Garage

Metolius 2-Car
2,095 Sq. Ft.
4 Bedroom, 3 Bath



Premier Collection

METOLIUS PREMIER

Available in 4 Communities

 4 Bedrooms

 3 Bathrooms

 2,095+ Sq. Ft.

 3 Car Garage

Metolius 2-Car
2,095 Sq. Ft.
4 Bedroom, 3 Bath

