

Premier Collection

MIRANDA PREMIER

Available in 4 Communities

 4 Bedrooms

 3 Bathrooms

 2,517+ Sq. Ft.

 2 Car Garage



T - Traditional



V - Farmhouse



- 9 Foot Ceilings throughout Main Level
- Spacious Downstairs Great Room
- Gourmet Kitchen
- Kitchen Island with Sink
- Kitchen Pantry

- Large Upstairs Bonus Room / Loft
- Open Great Room with Gas Fireplace
- Primary Suite with Large Walk-in Closet
- Quartz Countertops throughout Home
- Stainless Steel Appliances



www.MtVistaHomes.com

In a continual effort to improve our product, MonteVista Homes reserves the right to change product design, features, materials, floor plans, specifications, prices and terms without prior notice. Square footage stated or implied are approximate. Images may be representative of future home and show what's possible not what's included. Seller is a licensed real estate broker in the State of Oregon. CCB#203709



Premier Collection

MIRANDA PREMIER

Available in 4 Communities

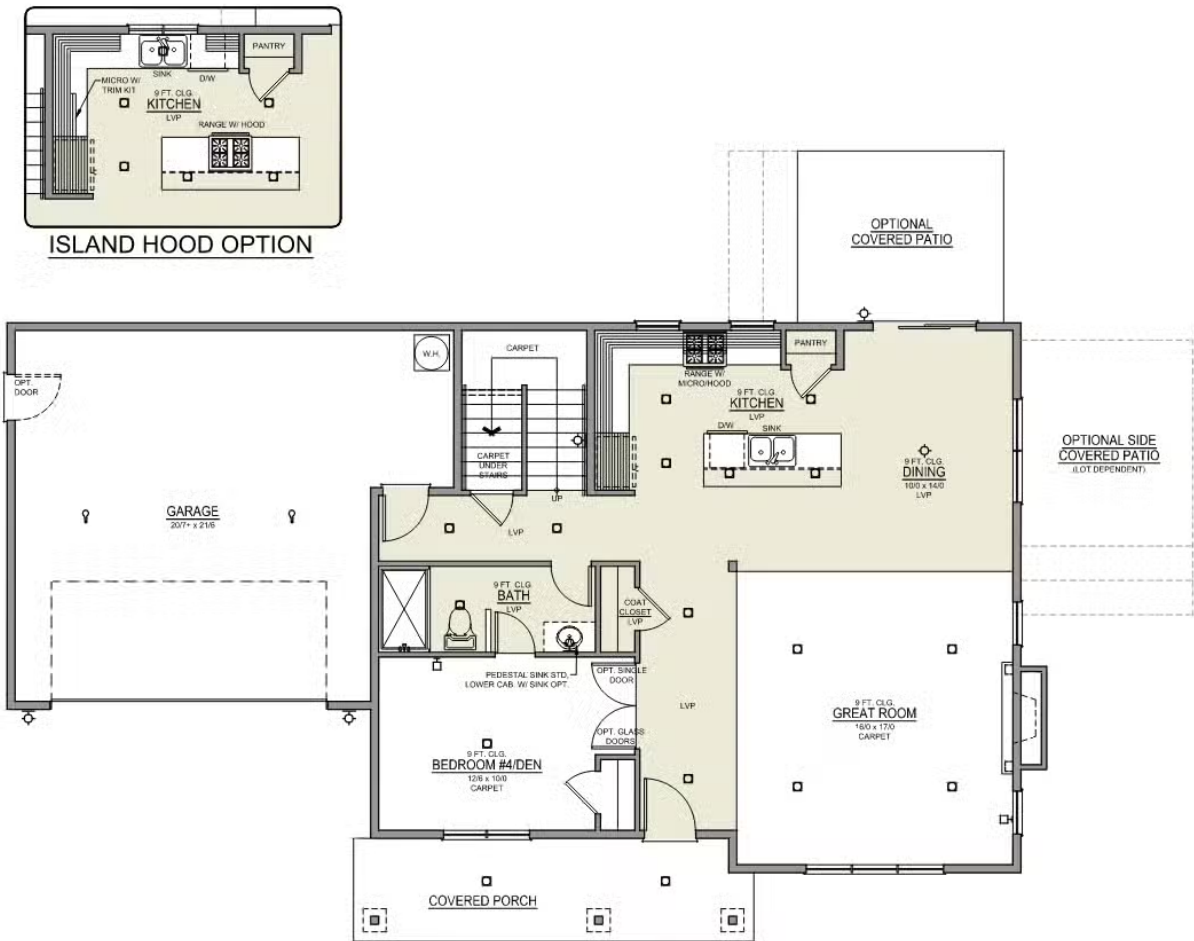
 4 Bedrooms

 3 Bathrooms

 2,517+ Sq. Ft.

 2 Car Garage

Miranda 2-Car
2,517 Sq. Ft.
4 Bedroom, 3 Bath



MIRANDA PREMIER

 **4 Bedrooms**

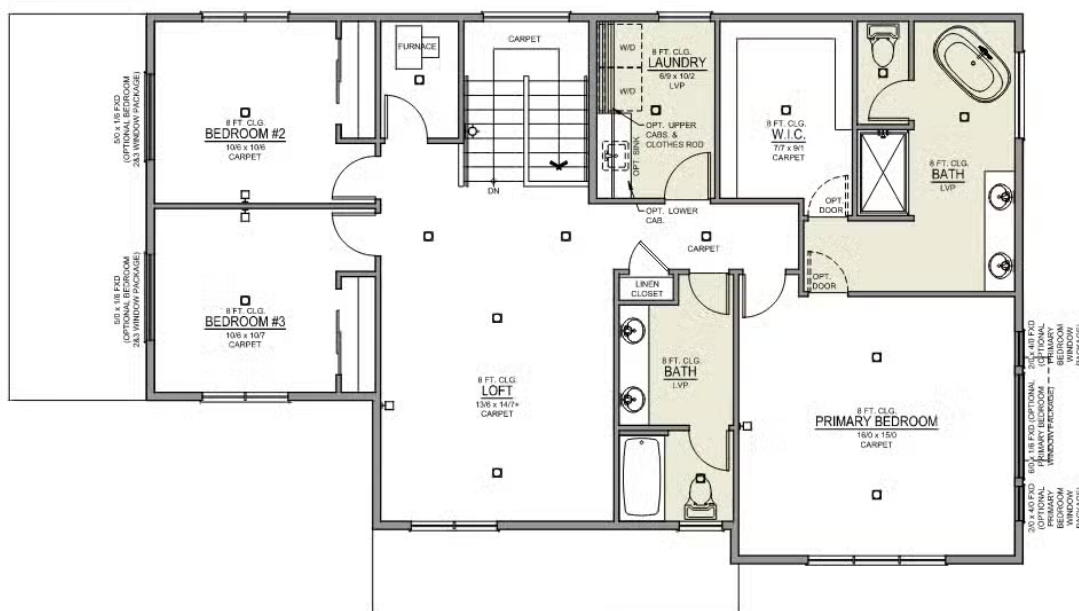
 **3 Bathrooms**

🏠 2,517+ Sq. Ft.

 **2 Car Garage**



4 Bedroom, 3 Bath



UPPER FLOOR