

 3 Bedrooms  2.5 Bathrooms  1,957+ Sq. Ft.  2 Car Garage  674,344

UNDER CONSTRUCTION



Z - Farmhouse



- Dynamic Two-Story Layout
- Gourmet Kitchen with Large Pantry
- Kitchen Island with Quartz Countertops
- Quality Stainless Steel Appliances
- Large Upstairs Flexible Space Loft
- Master Suite with Walk-in Closet
- Open Great Room & Cozy Gas Fireplace
- Covered Front Porch

3 Bedrooms

2.5 Bathrooms

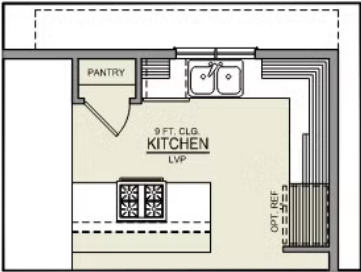
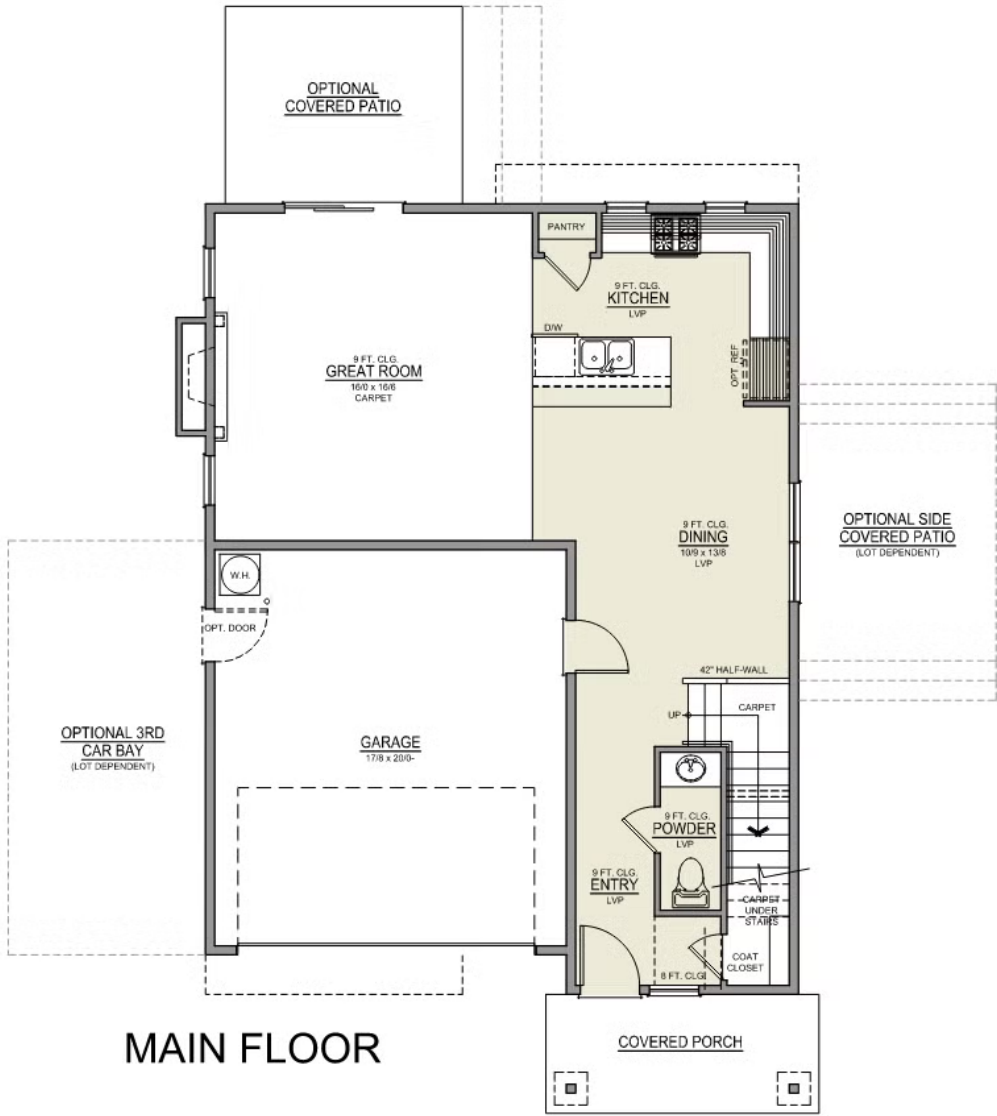
1,957+ Sq. Ft.

2 Car Garage

674,344

Main Floor | Brokentop

Brokentop 2-Car
1,957 Sq. Ft.
3 Bedroom, 2.5 Bath



ISLAND HOOD OPTION

3 Bedrooms

2.5 Bathrooms

1,957+ Sq. Ft.

2 Car Garage

674,344

Upper Floor | Brokentop

Brokentop 2-Car
1,957 Sq. Ft.
3 Bedroom, 2.5 Bath

