

Premier Collection

# JEFFERSON PREMIER

ACAPELLA

 4 Bedrooms  2.5 Bathrooms  1,761+ Sq. Ft.  2 Car Garage  From: \$589,997



T - Traditional



U - Craftsman



V - Farmhouse



- 4th Bedroom or Den on Main Level
- 9 Foot Ceilings throughout Main Level
- Gourmet Kitchen
- Kitchen Island with Sink
- Kitchen Pantry

- Open Great Room with Gas Fireplace
- Primary Suite with Walk-in Closet
- Quartz Countertops throughout Home
- Stainless Steel Appliances

 **MonteVista Homes &  
PacWest Realty Group**

**541-588-1049**  
**[www.MtVistaHomes.com](http://www.MtVistaHomes.com)**

In a continual effort to improve our product, MonteVista Homes reserves the right to change product design, features, materials, floor plans, specifications, prices and terms without prior notice. Square footage stated or implied are approximate. Images may be representative of future home and show what's possible not what's included. Seller is a licensed real estate broker in the State of Oregon. CCB#203709



Premier Collection

# JEFFERSON PREMIER

ACAPELLA

4 Bedrooms

2.5 Bathrooms

1,761+ Sq. Ft.

2 Car Garage

From: \$589,997

Jefferson 2-Car  
1,761 Sq. Ft.  
4 Bedroom, 2.5 Bath



MAIN FLOOR

Premier Collection

# JEFFERSON PREMIER

ACAPELLA

 4 Bedrooms

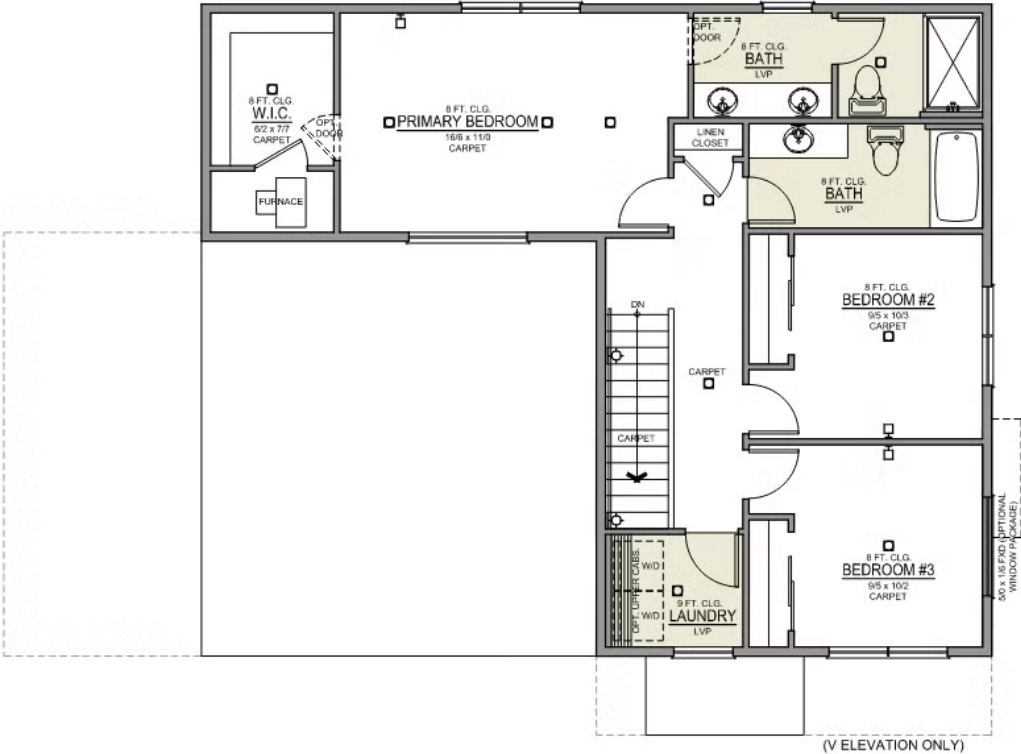
 2.5 Bathrooms

 1,761+ Sq. Ft.

 2 Car Garage

 From: \$589,997

Jefferson 2-Car  
1,761 Sq. Ft.  
4 Bedroom, 2.5 Bath



UPPER FLOOR