

 4 Bedrooms  3 Bathrooms  2,029+ Sq. Ft.  2 Car Garage  679,709

UNDER CONSTRUCTION



X - Craftsmen



- 9 Foot Ceilings Both Levels
- Multi-Gen Downstairs Suite
- Upstairs Bonus Room / Loft
- Designer Kitchen Island Range Configuration
- Farmhouse Style Sink in Kitchen
- Quartz Kitchen Countertops with Full-Height Backsplash

- 8 Foot Doors
- Oversized Windows
- Upgraded Cabinets
- Tile Shower in Primary Bathroom
- Free-Standing Soaking Tub
- Smart Home Ready

 4 Bedrooms

 3 Bathrooms

 2,029+ Sq. Ft.

 2 Car Garage

 679,709

Acapella Lot 19 - Metolius X 2-Car  
2,029 Sq. Ft.  
4 Bedroom, 3 Bath



MAIN FLOOR

 4 Bedrooms

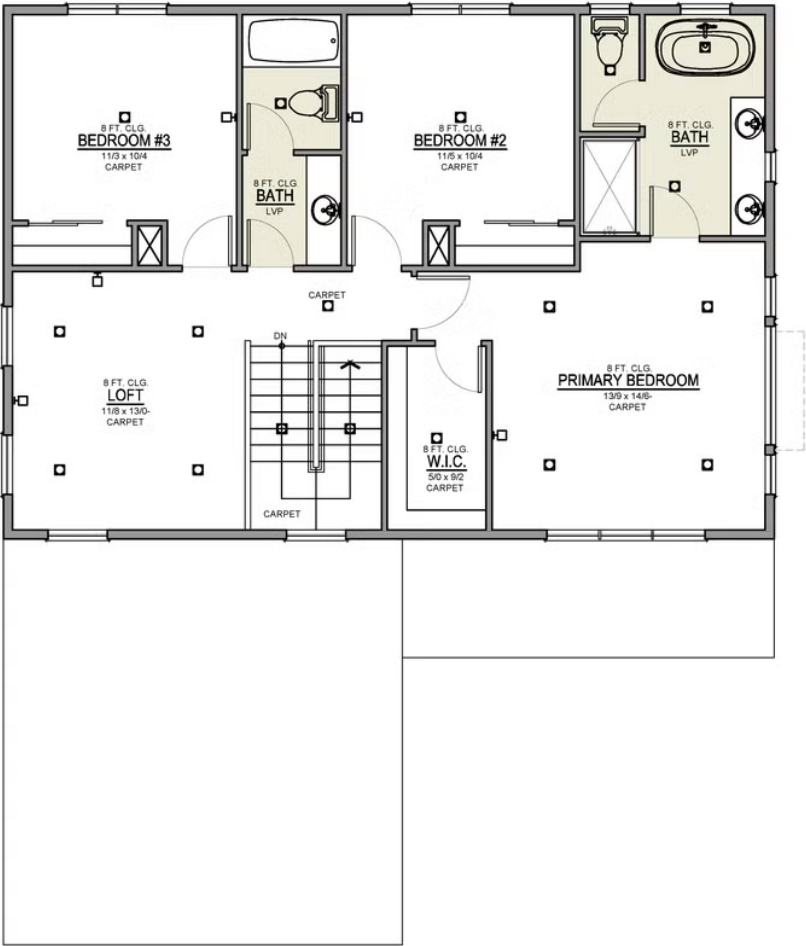
 3 Bathrooms

 2,029+ Sq. Ft.

 2 Car Garage

 679,709

Acapella Lot 19 - Metolius X 2-Car  
2,029 Sq. Ft.  
4 Bedroom, 3 Bath



UPPER FLOOR