

Premier Collection

DOUGLAS PREMIER

CANYON TRAILS

 4 Bedrooms  3 Bathrooms  2,427+ Sq. Ft.  2 Car Garage  From: \$589,997



U - Craftsman



V - Farmhouse



- 9 Foot Ceilings throughout Main Level
- Open Concept Living with Gas Fireplace
- Gourmet Kitchen
- Kitchen Island with Sink
- Kitchen Pantry
- Large Upstairs Bonus Room / Loft
- Main Level Guest Suite / Den
- Quartz Countertops throughout Home
- Stainless Steel Appliances

 **MonteVista Homes &
PacWest Realty Group**

541-640-5225
www.MtVistaHomes.com

In a continual effort to improve our product, MonteVista Homes reserves the right to change product design, features, materials, floor plans, specifications, prices and terms without prior notice. Square footage stated or implied are approximate. Images may be representative of future home and show what's possible not what's included. Seller is a licensed real estate broker in the State of Oregon. CCB#203709



Premier Collection

DOUGLAS PREMIER

CANYON TRAILS

4 Bedrooms

3 Bathrooms

2,427+ Sq. Ft.

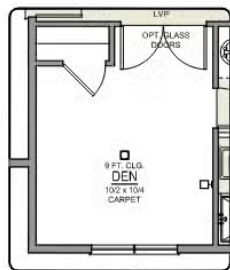
2 Car Garage

From: \$589,997

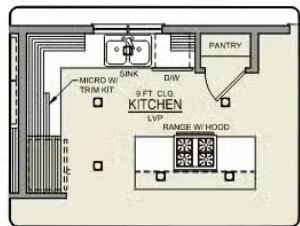
Douglas 2-Car
2,427 Sq. Ft.
4 Bedroom, 3 Bath



MAIN FLOOR



DEN OPTION



ISLAND HOOD OPTION

Premier Collection

DOUGLAS PREMIER

CANYON TRAILS

4 Bedrooms

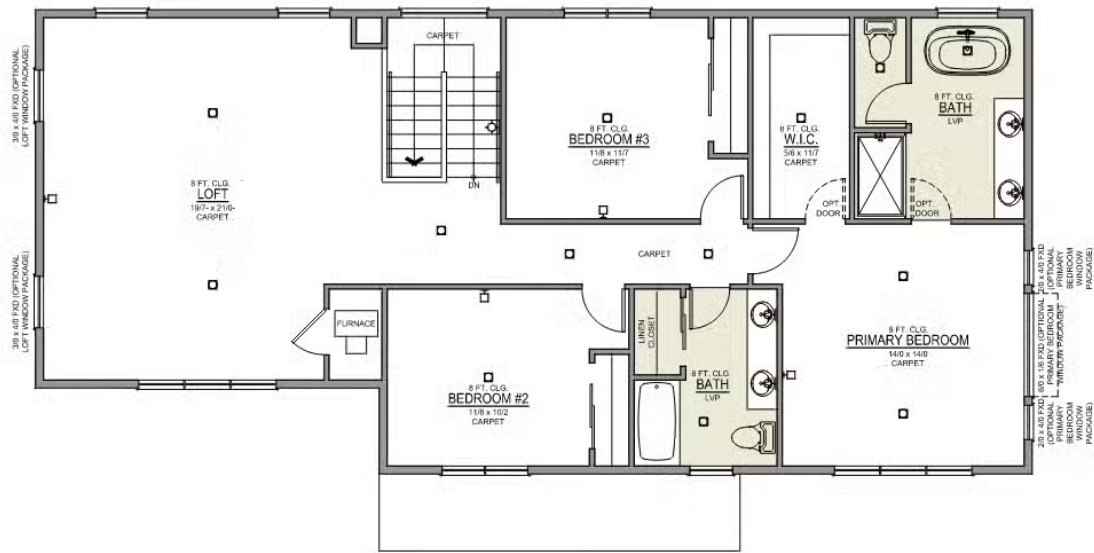
3 Bathrooms

2,427+ Sq. Ft.

2 Car Garage

From: \$589,997

Douglas 2-Car
2,427 Sq. Ft.
4 Bedroom, 3 Bath



UPPER FLOOR

