

CANYON TRAILS

SYCAMORE PREMIER
LOT 55

1123 NW Varnish Ln. Redmond, OR 97756

 3 Bedrooms

 2 Bathrooms

 1,553+ Sq. Ft.

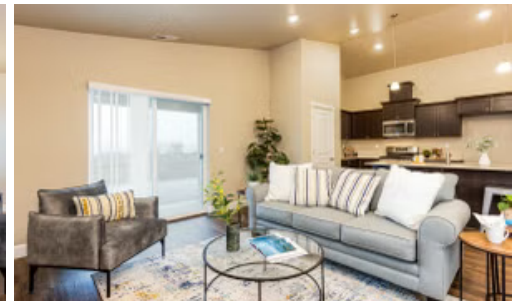
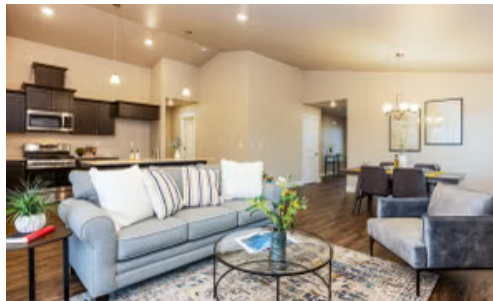
 2 Car Garage

 505,853

UNDER CONSTRUCTION



V - Farmhouse, 2 Car



- Gourmet Kitchen
- Kitchen Center Island with Sink
- Large Kitchen Pantry
- Open Concept Living with Gas Fireplace
- Primary Suite with Walk-in Closet
- Quartz Countertops throughout Home
- Stainless Steel Appliances
- Covered Rear Patio

 **MonteVista Homes &
PacWest Realty Group**

541-640-5225
www.MtVistaHomes.com

In a continual effort to improve our product, MonteVista Homes reserves the right to change product design, features, materials, floor plans, specifications, prices and terms without prior notice. Square footage stated or implied are approximate. Images may be representative of future home and show what's possible not what's included. Seller is a licensed real estate broker in the State of Oregon. CCB#203709



CANYON TRAILS

SYCAMORE PREMIER
LOT 55

1123 NW Varnish Ln. Redmond, OR 97756

3 Bedrooms

2 Bathrooms

1,553+ Sq. Ft.

2 Car Garage

505,853

Sycamore 2-Car
1,553 Sq. Ft.
3 Bedroom, 2 Bath

