

Distinct Collection

Charity Distinct

Available in 2 Communities

 3 Bedrooms

 2 Bathrooms

 1,892 Sq. Ft.

 2 Car Garage



X - CRAFTSMAN



Y - MODERN



Z - FARMHOUSE



- 9 Foot Ceilings with 8 Foot Doors
- Vaulted Ceilings in Great Room
- Kitchen Island Range Configuration
- Quartz Kitchen Countertops with Full-Height Backsplash

- Free-Standing Soaking Tub
- Great Room with Fireplace
- Corner Kitchen Pantry
- Laundry/Mud room access from Garage
- Smart Home Ready

MonteVista HOMES

In a continual effort to improve our product, MonteVista Homes reserves the right to change product design, features, materials, floor plans, specifications, prices and terms without prior notice. Square footage stated or implied are approximate. Images may be representative of future home and show what's possible not what's included. Seller is a licensed real estate broker in the State of Oregon. CCB#203709



Distinct Collection

Charity Distinct

Available in 2 Communities

 3 Bedrooms

 2 Bathrooms

 1,892 Sq. Ft.

 2 Car Garage

Charity 2-Car
1,892 Sq. Ft.
3 Bedroom, 2 Bath



Distinct Collection

Charity Distinct

Available in 2 Communities

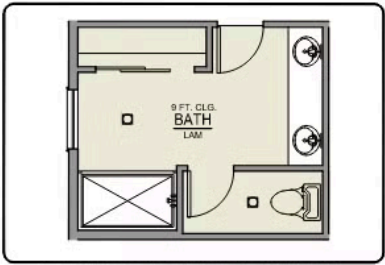
 3 Bedrooms

 2 Bathrooms

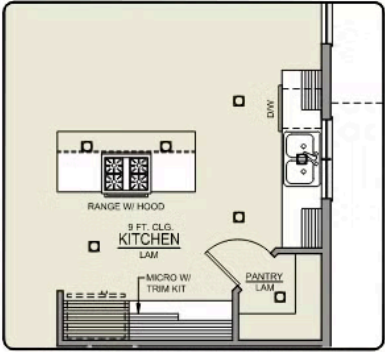
 1,892 Sq. Ft.

 2 Car Garage

Charity 2-Car
1,892 Sq. Ft.
3 Bedroom, 2 Bath



PRIMARY BATH LINEN CLOSET OPTION



ISLAND HOOD OPTION