

Distinct Collection

# Douglas Distinct

 4 Bedrooms

 3 Bathrooms

 2,427 Sq. Ft.

 2 Car Garage



X - CRAFTSMAN



Y - MODERN



Z - FARMHOUSE



- 9 Foot Ceilings with 8 Foot Doors
- Kitchen Island with Range
- Quartz Countertops with Full-Height Backsplash
- Free-Standing Soaking Tub
- Tile Shower in Primary Bathroom
- Great Room with Fireplace
- Upstairs Bonus Room / Loft
- Main Level Guest Suite / Den
- Smart Home Ready

## MonteVista HOMES

*In a continual effort to improve our product, MonteVista Homes reserves the right to change product design, features, materials, floor plans, specifications, prices and terms without prior notice. Square footage stated or implied are approximate. Images may be representative of future home and show what's possible not what's included. Seller is a licensed real estate broker in the State of Oregon. CCB#203709*



Distinct Collection

# Douglas Distinct

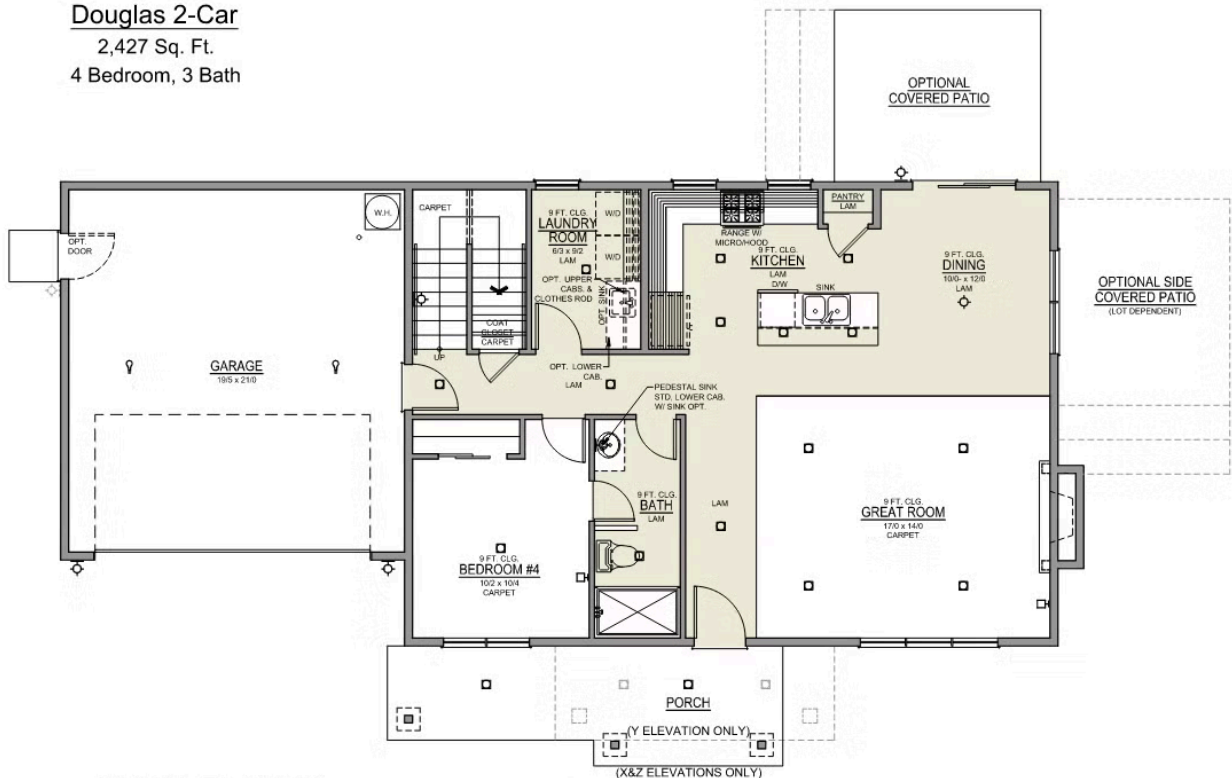
 4 Bedrooms

 3 Bathrooms

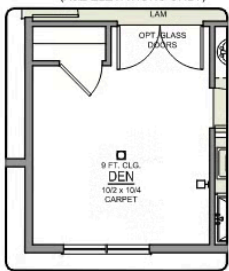
 2,427 Sq. Ft.

 2 Car Garage

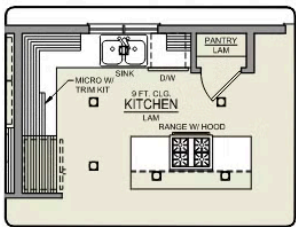
Douglas 2-Car  
2,427 Sq. Ft.  
4 Bedroom, 3 Bath



MAIN FLOOR



DEN OPTION



ISLAND HOOD OPTION

Distinct Collection

# Douglas Distinct

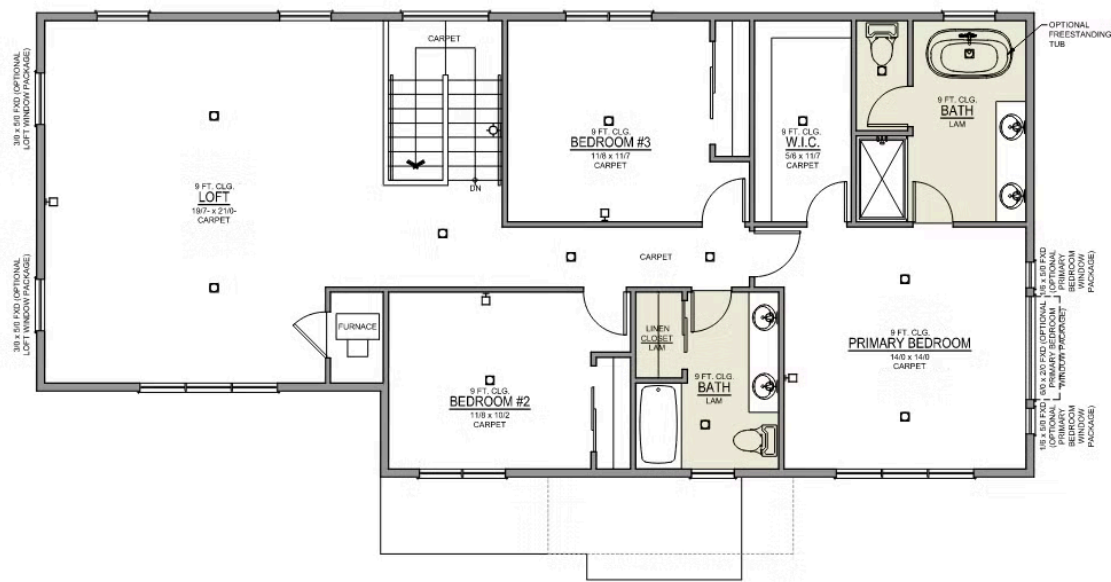
 4 Bedrooms

 3 Bathrooms

 2,427 Sq. Ft.

 2 Car Garage

Douglas 2-Car  
2,427 Sq. Ft.  
4 Bedroom, 3 Bath



UPPER FLOOR

