

Premier Collection

# DOUGLAS PREMIER

Available in 3 Communities

 4 Bedrooms

 3 Bathrooms

 2,427+ Sq. Ft.

 2 Car Garage



U - Craftsman



V - Farmhouse



- 9 Foot Ceilings throughout Main Level
- Open Concept Living with Gas Fireplace
- Gourmet Kitchen
- Kitchen Island with Sink
- Kitchen Pantry
- Large Upstairs Bonus Room / Loft
- Main Level Guest Suite / Den
- Quartz Countertops throughout Home
- Stainless Steel Appliances



[www.MtVistaHomes.com](http://www.MtVistaHomes.com)

*In a continual effort to improve our product, MonteVista Homes reserves the right to change product design, features, materials, floor plans, specifications, prices and terms without prior notice. Square footage stated or implied are approximate. Images may be representative of future home and show what's possible not what's included. Seller is a licensed real estate broker in the State of Oregon. CCB#203709*



Premier Collection

# DOUGLAS PREMIER

Available in 3 Communities

 4 Bedrooms

 3 Bathrooms

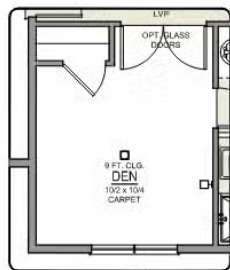
 2,427+ Sq. Ft.

 2 Car Garage

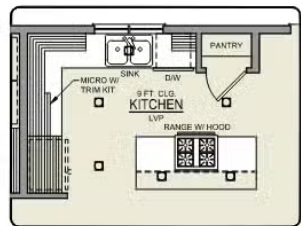
Douglas 2-Car  
2,427 Sq. Ft.  
4 Bedroom, 3 Bath



MAIN FLOOR



DEN OPTION



ISLAND HOOD OPTION

Premier Collection

# DOUGLAS PREMIER

Available in 3 Communities

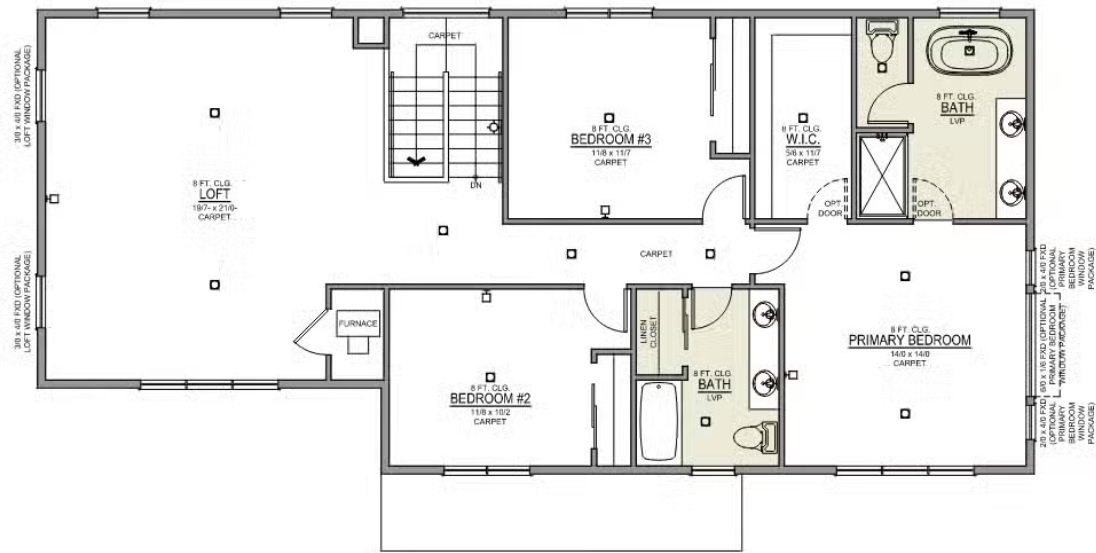
 4 Bedrooms

 3 Bathrooms

 2,427+ Sq. Ft.

 2 Car Garage

Douglas 2-Car  
2,427 Sq. Ft.  
4 Bedroom, 3 Bath



UPPER FLOOR

