

Premier Collection

# JEFFERSON PREMIER

Available in 6 Communities

 4 Bedrooms

 2.5 Bathrooms

 1,761+ Sq. Ft.

 2 Car Garage



T - Traditional



U - Craftsman



V - Farmhouse



- 4th Bedroom or Den on Main Level
- 9 Foot Ceilings throughout Main Level
- Gourmet Kitchen
- Kitchen Island with Sink
- Kitchen Pantry

- Open Great Room with Gas Fireplace
- Primary Suite with Walk-in Closet
- Quartz Countertops throughout Home
- Stainless Steel Appliances



[www.MtVistaHomes.com](http://www.MtVistaHomes.com)

*In a continual effort to improve our product, MonteVista Homes reserves the right to change product design, features, materials, floor plans, specifications, prices and terms without prior notice. Square footage stated or implied are approximate. Images may be representative of future home and show what's possible not what's included. Seller is a licensed real estate broker in the State of Oregon. CCB#203709*



Premier Collection

# JEFFERSON PREMIER

Available in 6 Communities

 4 Bedrooms

 2.5 Bathrooms

 1,761+ Sq. Ft.

 2 Car Garage

Jefferson 2-Car  
1,761 Sq. Ft.  
4 Bedroom, 2.5 Bath



MAIN FLOOR

Premier Collection

# JEFFERSON PREMIER

Available in 6 Communities

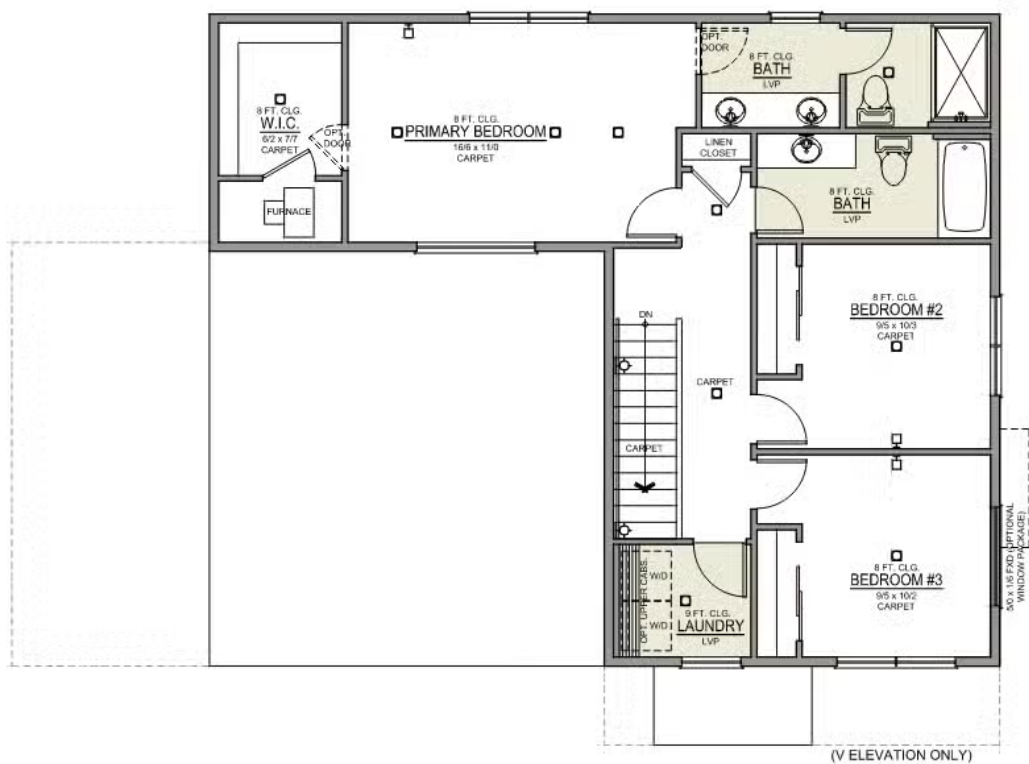
 4 Bedrooms

 2.5 Bathrooms

 1,761+ Sq. Ft.

 2 Car Garage

Jefferson 2-Car  
1,761 Sq. Ft.  
4 Bedroom, 2.5 Bath



UPPER FLOOR