

Premier Collection

Jefferson

Available in 3 Communities

4 Bedrooms

2.5 Bathrooms

1,761 Sq. Ft.

2 Car Garage



T - TRADITIONAL ELEVATION, 3 CAR



U - CRAFTSMAN ELEVATION



V - FARMHOUSE ELEVATION



The Jefferson is designed for buyers who want affordability and efficiency without giving up thoughtful living spaces. Its compact footprint opens to a bright main-level great room and kitchen that make everyday gathering feel natural. A main-floor bedroom adds flexibility for guests or a quiet work space. The nearby powder bath can be upgraded to a full bath for added privacy. Upstairs, three additional bedrooms create room for rest and routines, making this an approachable home shaped for real life.

MonteVista HOMES

In a continual effort to improve our product, MonteVista Homes reserves the right to change product design, features, materials, floor plans, specifications, prices and terms without prior notice. Square footage stated or implied are approximate. Images may be representative of future home and show what's possible not what's included. Seller is a licensed real estate broker in the State of Oregon. CCB#203709



Jefferson

Available in 3 Communities

4 Bedrooms

2.5 Bathrooms

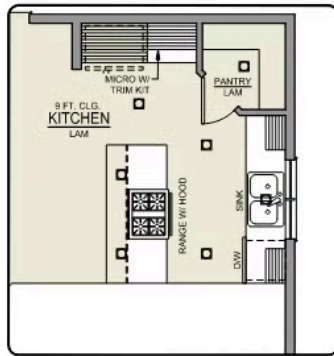
1,761 Sq. Ft.

2 Car Garage

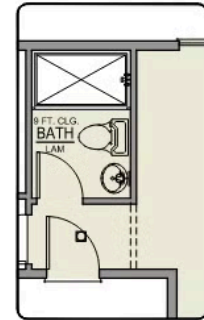
Jefferson 2-Car

1,761 Sq. Ft.

4 Bedroom, 2.5 Bath



ISLAND HOOD OPTION



BATHROOM OPTION



MAIN FLOOR

Premier Collection

Jefferson

Available in 3 Communities

 4 Bedrooms

 2.5 Bathrooms

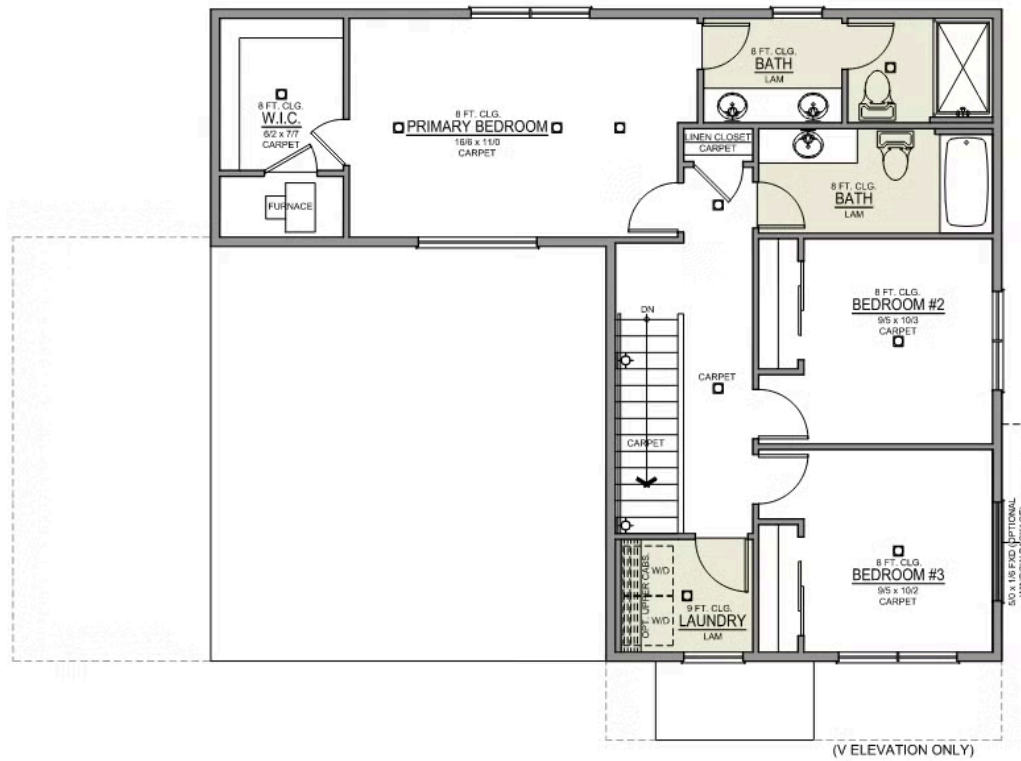
 1,761 Sq. Ft.

 2 Car Garage

Jefferson 2-Car

1,761 Sq. Ft.

4 Bedroom, 2.5 Bath



UPPER FLOOR