

Premier Collection

Metolius Premier

Available in 3 Communities

 4 Bedrooms

 3 Bathrooms

 2,029 Sq. Ft.

 3 Car Garage



T - TRADITIONAL, 2 CAR



U - CRAFTSMAN, 2 CAR



V - FARMHOUSE, 2 CAR



- Upstairs Flex Space/ Loft
- Kitchen Island with Sink
- Corner Kitchen Pantry
- Main Level Guest Suite or Office
- Great Room with Fireplace

- Primary Suite with Walk-in Closet
- Quartz Countertops throughout Home
- Stainless Steel Appliances
- 9 Foot Ceilings throughout Main Level

MonteVista HOMES

In a continual effort to improve our product, MonteVista Homes reserves the right to change product design, features, materials, floor plans, specifications, prices and terms without prior notice. Square footage stated or implied are approximate. Images may be representative of future home and show what's possible not what's included. Seller is a licensed real estate broker in the State of Oregon. CCB#203709



Premier Collection

Metolius Premier

Available in 3 Communities

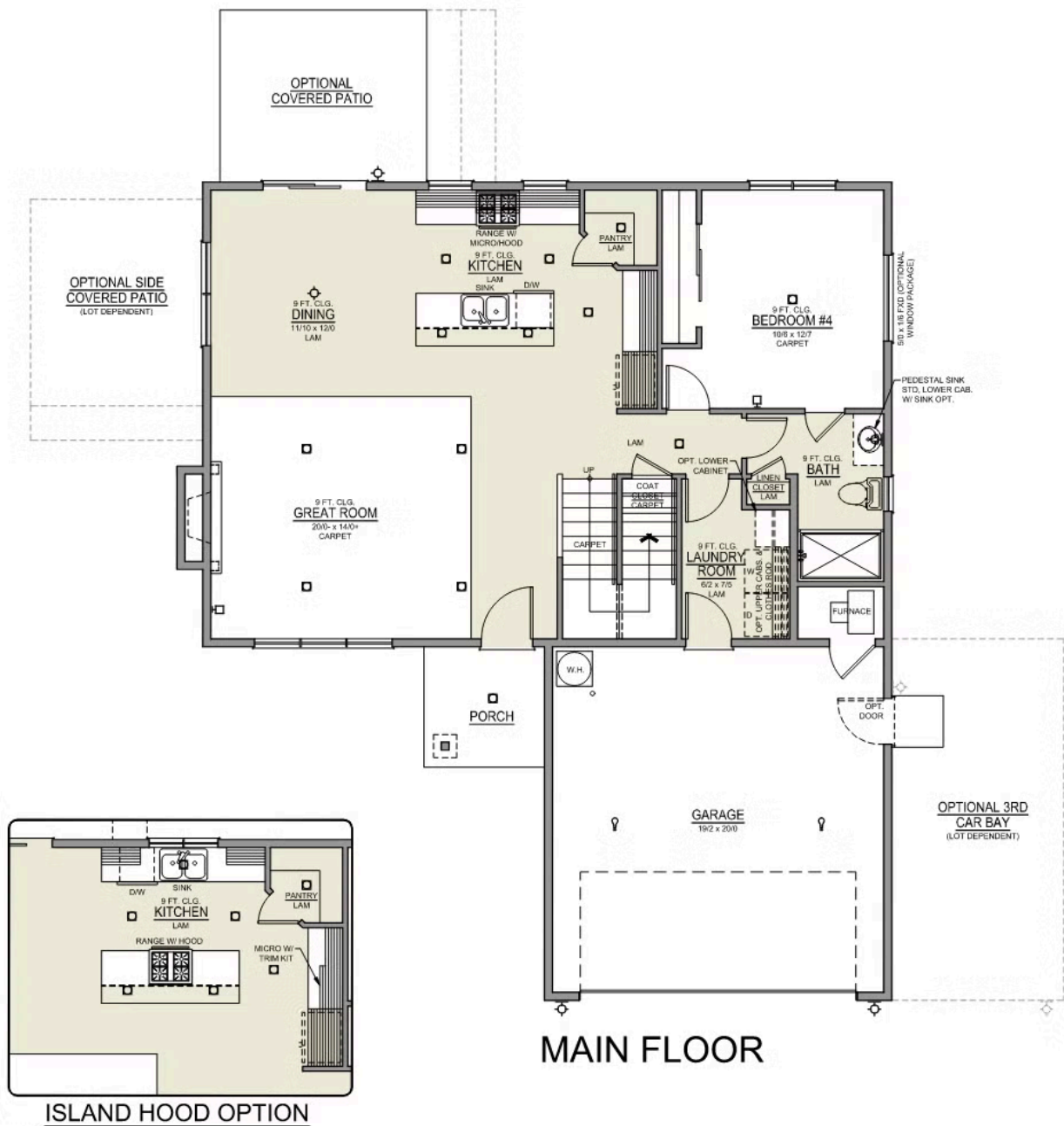
 4 Bedrooms

 3 Bathrooms

 2,029 Sq. Ft.

 3 Car Garage

Metolius 2-Car
2,095 Sq. Ft.
4 Bedroom, 3 Bath



Premier Collection

Metolius Premier

Available in 3 Communities

 4 Bedrooms

 3 Bathrooms

 2,029 Sq. Ft.

 3 Car Garage

Metolius 2-Car
2,095 Sq. Ft.
4 Bedroom, 3 Bath

