

 4 Bedrooms

 3 Bathrooms

 2,510+ Sq. Ft.

 2 Car Garage

 742,921

MOVE-IN READY



Z - Farmhouse



- 9 Foot Ceilings Both Levels
- Spacious Downstairs Great Room
- Gourmet Cooks Kitchen Island Range
- Quartz Kitchen Countertops with Full-Height Backsplash
- Large Upstairs Bonus Room / Loft

- Award Winning Primary Suite
- Free-Standing Soaking Tub
- Tile Shower in Primary Bathroom
- 8 Foot Doors
- Oversized Windows
- Smart Home Ready

 **MonteVista Homes &
PacWest Realty Group**

541-588-1049
www.MtVistaHomes.com

In a continual effort to improve our product, MonteVista Homes reserves the right to change product design, features, materials, floor plans, specifications, prices and terms without prior notice. Square footage stated or implied are approximate. Images may be representative of future home and show what's possible not what's included. Seller is a licensed real estate broker in the State of Oregon. CCB#203709



 4 Bedrooms

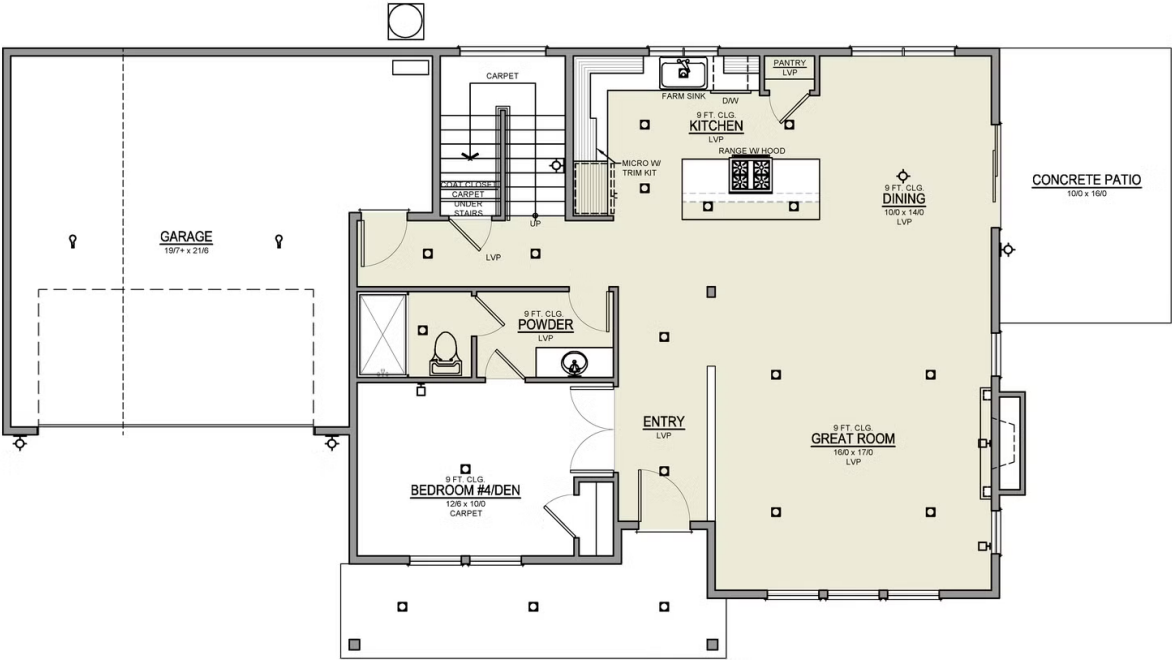
 3 Bathrooms

 2,510+ Sq. Ft.

 2 Car Garage

 742,921

Acapella Lot 22 - Miranda Z 2-Car
2,510 Sq. Ft.
4 Bedroom, 3 Bath



MAIN FLOOR

 4 Bedrooms

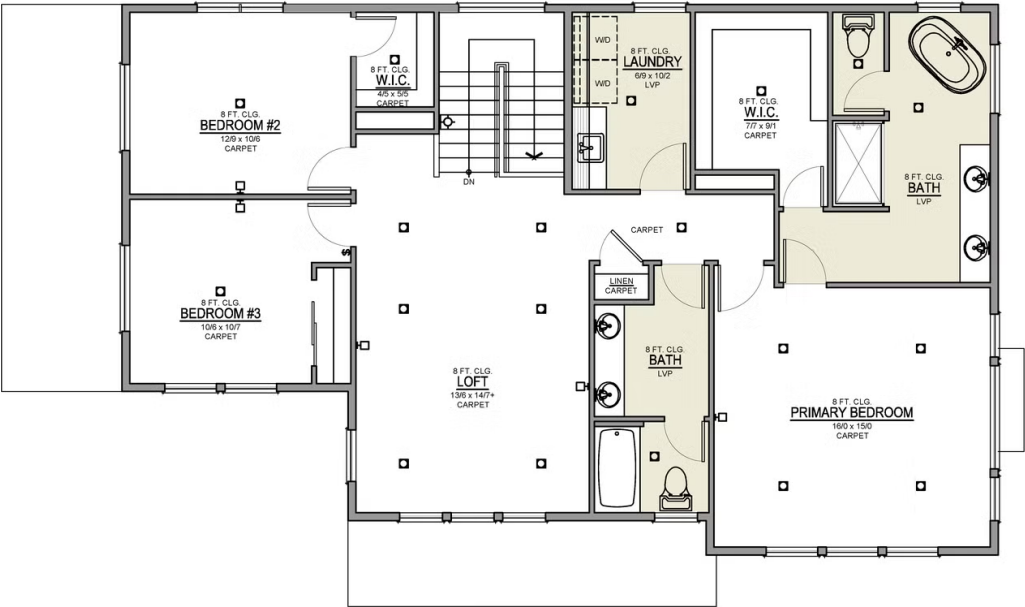
 3 Bathrooms

 2,510+ Sq. Ft.

 2 Car Garage

 742,921

Acapella Lot 22 - Miranda Z 2-Car
2,510 Sq. Ft.
4 Bedroom, 3 Bath



UPPER FLOOR