

# Artisan's Village

Charity Distinct  
LOT 19

2890 NE Pinnacle Pl. Bend, OR 97701

3 Bedrooms

2 Bathrooms

1,892 Sq. Ft.

2 Car Garage

699,900

UNDER CONSTRUCTION



Y - MODERN ELEVATION



- 9 Foot Ceilings with 8 Foot Doors
- Vaulted Ceilings in Great Room
- Kitchen Island Range Configuration
- Quartz Kitchen Countertops with Full-Height Backsplash

- Free-Standing Soaking Tub
- Great Room with Gas Fireplace
- Corner Kitchen Pantry
- Laundry/Mud room access from Garage
- Smart Home Ready

MonteVista  
HOMES

541-699-1180

*In a continual effort to improve our product, MonteVista Homes reserves the right to change product design, features, materials, floor plans, specifications, prices and terms without prior notice. Square footage stated or implied are approximate. Images may be representative of future home and show what's possible not what's included. Seller is a licensed real estate broker in the State of Oregon. CCB#203709*



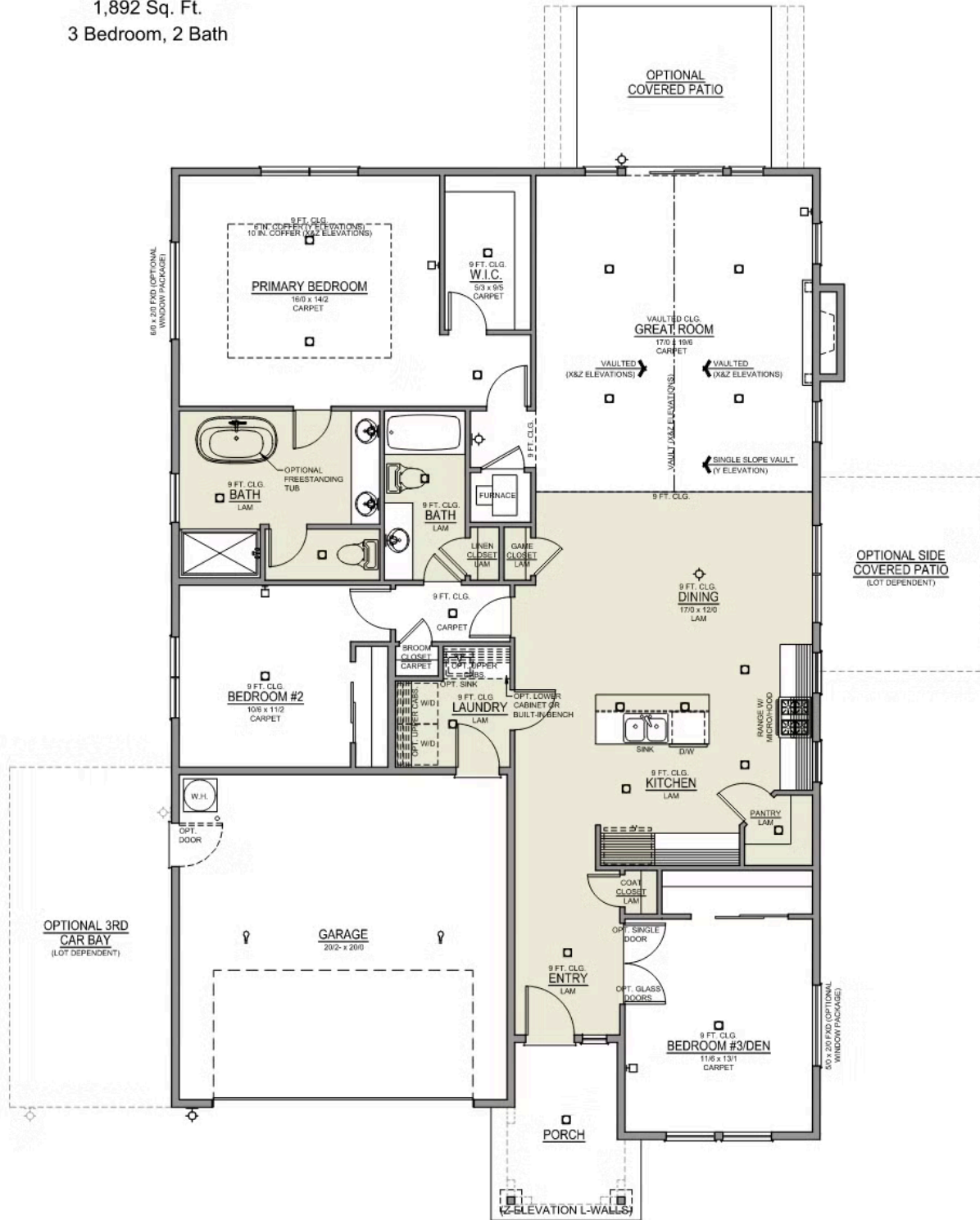
# Artisan's Village

Charity Distinct  
LOT 19

2890 NE Pinnacle Pl. Bend, OR 97701

3 Bedrooms 2 Bathrooms 1,892 Sq. Ft. 2 Car Garage 699,900

Charity 2-Car  
1,892 Sq. Ft.  
3 Bedroom, 2 Bath



# Artisan's Village

Charity Distinct  
LOT 19

2890 NE Pinnacle Pl. Bend, OR 97701

3 Bedrooms

2 Bathrooms

1,892 Sq. Ft.

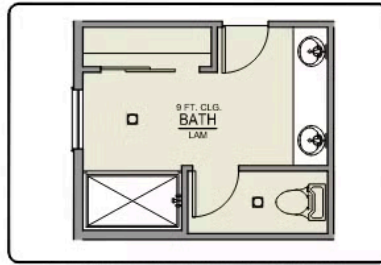
2 Car Garage

699,900

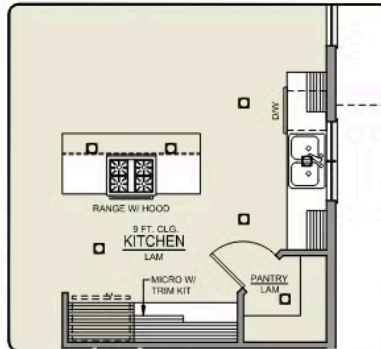
## Charity 2-Car

1,892 Sq. Ft.

3 Bedroom, 2 Bath



PRIMARY BATH LINEN  
CLOSET OPTION



ISLAND HOOD OPTION

 3 Bedrooms

 2 Bathrooms

 1,892 Sq. Ft.

 2 Car Garage

 699,900

- Interior Color Package: "Crystal Heights". Painted Cabinets (All cabinets in house MUST be selected as "PAINTED")
- Exterior Color Package: Twilight Ridge
- Light Fixtures: Acadia
- Doors: Hardware Standard. "Cove" knobs / "Amador" front door handle.
- Doors: Hardware Upgrade to "Ladera Levers"
- Bathroom: Upgrade finishes to BLACK - All bathrooms. Soaker Tub INCLUDED. (Plumbing Fixtures, bath accessories and shower door hardware)
- Bathroom: Shower Enclosure Glass Color Choice
- Electrical Package: Tech Package Pre Wire - Includes Panel, 110 outlet, 1 Dual Wall Plate (Coax & Ethernet) in Great Room
- Windows Package: Optional Windows
- Kitchen: Island Range with Hood. 42" (Distinct Series Only) Cabinets. PAINTED Kitchen & Bathroom Cabinets. Sliding Window over the sink.
- Cabinets: Add Soft Close Doors and Drawers
- Laundry Room: Upper Cabinets: PAINTED- 36"
- Laundry Room: Upgrade from 36" Upper Cabinets to 42". - PAINTED (Distinct Series Only)
- Laundry Room: Lower Cabs - PAINTED With Quartz Top and Backsplash.
- Cabinets: Knobs and Pulls
- Kitchen: Full Height Backsplash
- Counters: Quartz Counters and Backsplash in Kitchen
- Counters: Quartz Counters and Backsplash in Guest Bath
- Counters: Quartz Counters and Backsplash in Master Bath
- Bathroom: Tile Shower in Place of Fiberglass Shower. 5-ft Shower w/ Fiberglass Pan
- Covered Patio - Rear - 12x10
- Electrical: Recessed LEDs. Add 2 for 4 total+ Dimmer in Primary Bedroom.
- Kitchen: Under Cabinet Lighting
- Doors: Interior Double Doors Upgrade to Full Light Glass Double Doors. 8-0 doors (Distinct Series).
- Doors: Exterior Front Door. 5 PANEL 8-0. Satin Etch (Distinct Series Only)
- Doors Package: Add Optional 8/0 Interior Doors - (Distinct Series Only)
- Doors Package: Upgrade to 5-Panel Interior Doors. \*Includes Optional Interior Doors. 8/0 Interior Doors (Distinct Series Only)
- Man Door: Exterior door from garage to outside - Includes exterior coach light.
- Doors: Kitchen Pantry Door w/ Glass. Frosted & Border.
- Flooring: Great Room - Wood Laminate (Casita Court)
- Flooring: Hallway Down - Wood Laminate (Casita Court)
- Garage: Finished Garages -Base House: Walls Textured (Orange Peel), Primed & Painted.
- Garage: Garage Door Opener
- Garage: Garage Door Opener Wireless Keypad
- HVAC: Air Conditioner - PreWire not previously selected
- Fireplace: (Direct Vent) with Mantel and Stone Surround
- Garage: Insulated Garage - 2 Car Bays. Walls and Ceiling (Garage Door already insulated).
- Exterior: Stone Garage Wing Wall
- Kitchen: Farm Sink - Stainless Steel Single Bowl
- Kitchen: Upgrade Faucet to Moen Arbor SRS
- Bathroom: Freestanding Soaker Tub