




# Artisan's Village

Charlotte Distinct  
LOT 22

2872 NE Pinnacle Pl. Bend, OR 97701

 4 Bedrooms  2 Bathrooms  1,701 Sq. Ft.  2 Car Garage  629,900

MOVE-IN READY



Z - FARMHOUSE



- 9 Foot Ceilings with 8 Foot Doors
- Vaulted Ceilings in Great Room
- Quartz Kitchen Countertops with Full-Height Backsplash
- Oversized Windows
- Tile Shower in Primary Bathroom
- Farmhouse Style Sink in Kitchen
- Laundry Room

MonteVista  
HOMES

541-699-1180

*In a continual effort to improve our product, MonteVista Homes reserves the right to change product design, features, materials, floor plans, specifications, prices and terms without prior notice. Square footage stated or implied are approximate. Images may be representative of future home and show what's possible not what's included. Seller is a licensed real estate broker in the State of Oregon. CCB#203709*



# Artisan's Village

Charlotte Distinct  
LOT 22

2872 NE Pinnacle Pl. Bend, OR 97701

 4 Bedrooms

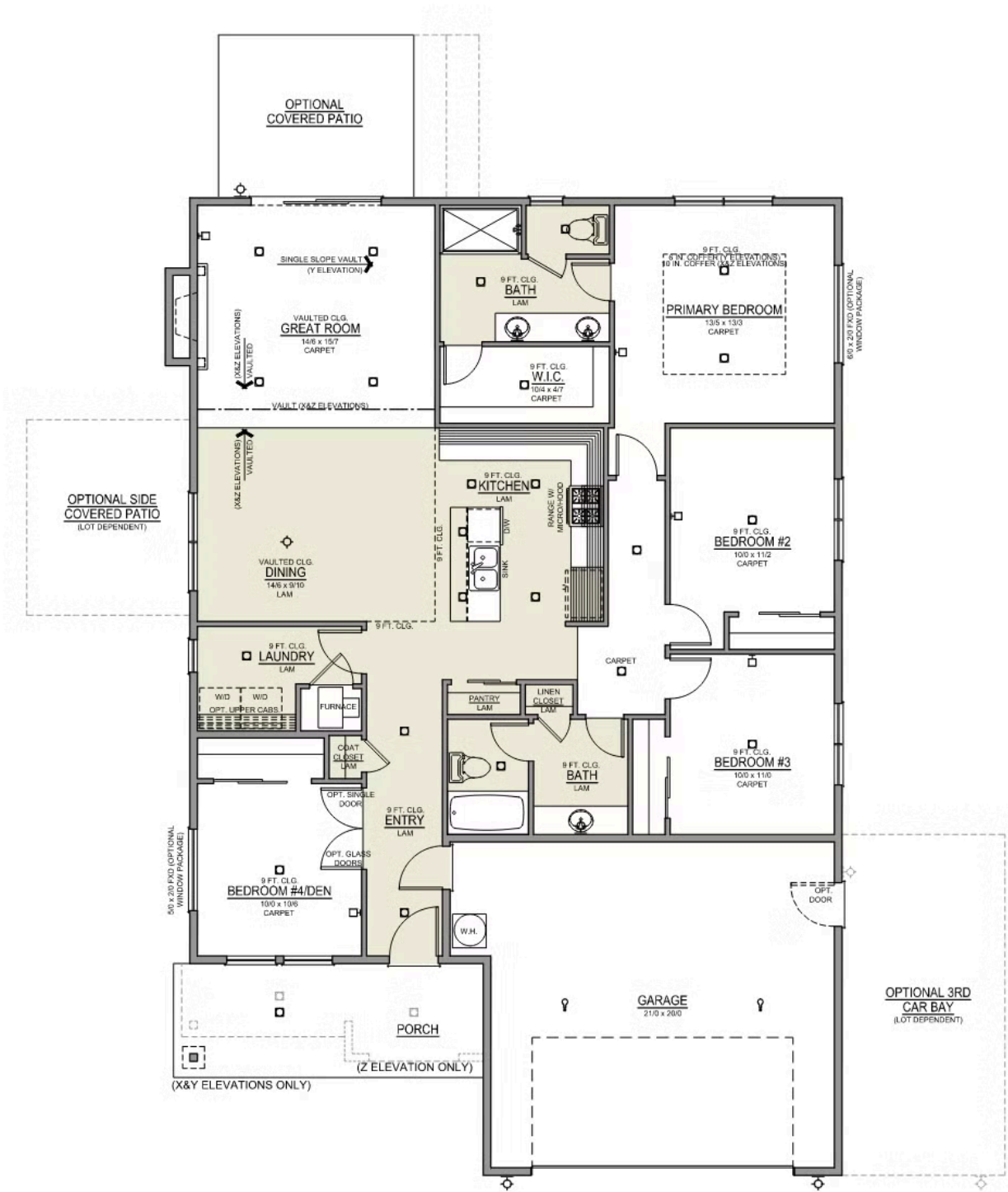
 2 Bathrooms

 1,701 Sq. Ft.

 2 Car Garage

 629,900

Charlotte 2-Car  
1,701 Sq. Ft.  
4 Bedroom, 2 Bath






# Artisan's Village

## OPTIONS

Charlotte Distinct  
LOT 22

2872 NE Pinnacle Pl. Bend, OR 97701

 4 Bedrooms  2 Bathrooms  1,701 Sq. Ft.  2 Car Garage  629,900

- Interior Color Package: "Crystal Heights". Painted Cabinets (All cabinets in house MUST be selected as "PAINTED")
- Exterior Color Package: Alpine Trail
- Light Fixtures: Acadia
- Doors: Hardware Standard. "Cove" knobs / "Amador" front door handle.
- Doors: Hardware Upgrade to "Ladera Levers"
- Bathroom: All bathrooms Upgrade to BLACK Finishes. Soaker Tub NOT included. (Plumbing Fixtures, bath accessories and shower door hardware)
- Shower Enclosure Glass Color Choice
- Electrical Package: Tech Package Pre Wire - Includes Panel, 110 outlet, 1 Dual Wall Plate (Coax & Ethernet) in Great Room
- Windows Package: Optional Windows
- Add Soft Close Doors and Drawers
- Laundry Room Upper Cabinets: PAINTED- 36"
- Laundry Room: Upgrade from 36" Upper Cabinets to 42". - PAINTED (Distinct Series Only)
- Kitchen: 42" Cabinets (Distinct Series Only). PAINTED Kitchen & Bathroom Cabinets
- Kitchen: Full Height Backsplash
- Counters: Quartz Counters and Backsplash in Kitchen
- Counters: Quartz Counters and Backsplash in Guest Bath
- Counters: Quartz Counters and Backsplash in Master Bath
- Bathroom: Tile Shower in Place of Fiberglass Shower. 5-ft Shower w/ Fiberglass Pan
- Covered Patio - Rear - 12x10
- Recessed LED: Add 2 for 4 total+ Dimmer in Primary Bedroom.
- Kitchen: Under Cabinet Lighting
- Double Doors - Distinct Series - Upgrade to Full Light Glass - Interior 8-0 door
- Doors: Exterior Front Door. 5 PANEL 8-0. Satin Etch (Distinct Series Only)
- Doors Package: Add Optional 8/0 Interior Doors - (Distinct Series Only)
- Doors Package: Upgrade to 5-Panel Interior Doors. \*Includes Optional Interior Doors. 8/0 Interior Doors (Distinct Series Only)
- Man Door: Exterior door from garage to outside - Includes exterior coach light.
- LVP Flooring: Great Room
- Garage: Finished Garages -Base House: Walls Textured (Orange Peel), Primed & Painted.
- Garage: Garage Door Glass. Double Car Door
- Garage: Garage Door Opener
- Garage: Garage Door Opener Wireless Keypad
- HVAC: Air Conditioner - PreWire not previously selected
- Fireplace: (Direct Vent) with Mantel and Stone Surround
- Garage: Insulated Garage - 2 Car Bays. Walls, Ceiling and Garage Door.
- Farm Sink: Stainless Steel Single Bowl
- Faucet: Moen Arbor SRS

MonteVista  
HOMES

541-699-1180

*In a continual effort to improve our product, MonteVista Homes reserves the right to change product design, features, materials, floor plans, specifications, prices and terms without prior notice. Square footage stated or implied are approximate. Images may be representative of future home and show what's possible not what's included. Seller is a licensed real estate broker in the State of Oregon. CCB#203709*

