

Artisan's Village

Charlotte Distinct
LOT 28

2883 NE Pinnacle Pl. Bend, OR 97701

4 Bedrooms

2 Bathrooms

1,701 Sq. Ft.

2 Car Garage

659,900

UNDER CONSTRUCTION



Y - MODERN



- 9 Foot Ceilings with 8 Foot Doors
- Great Room Vaulted Ceilings
- Quartz Kitchen Countertops with Full-Height Backsplash

- Quartz countertops throughout the home
- Tile Shower in Primary Bathroom
- Farmhouse Style Sink in Kitchen
- Smart Home Ready

MonteVista
HOMES

541-699-1180

In a continual effort to improve our product, MonteVista Homes reserves the right to change product design, features, materials, floor plans, specifications, prices and terms without prior notice. Square footage stated or implied are approximate. Images may be representative of future home and show what's possible not what's included. Seller is a licensed real estate broker in the State of Oregon. CCB#203709



Artisan's Village

Charlotte Distinct
LOT 28

2883 NE Pinnacle Pl. Bend, OR 97701

🛏 4 Bedrooms

🚿 2 Bathrooms

🏠 1,701 Sq. Ft.

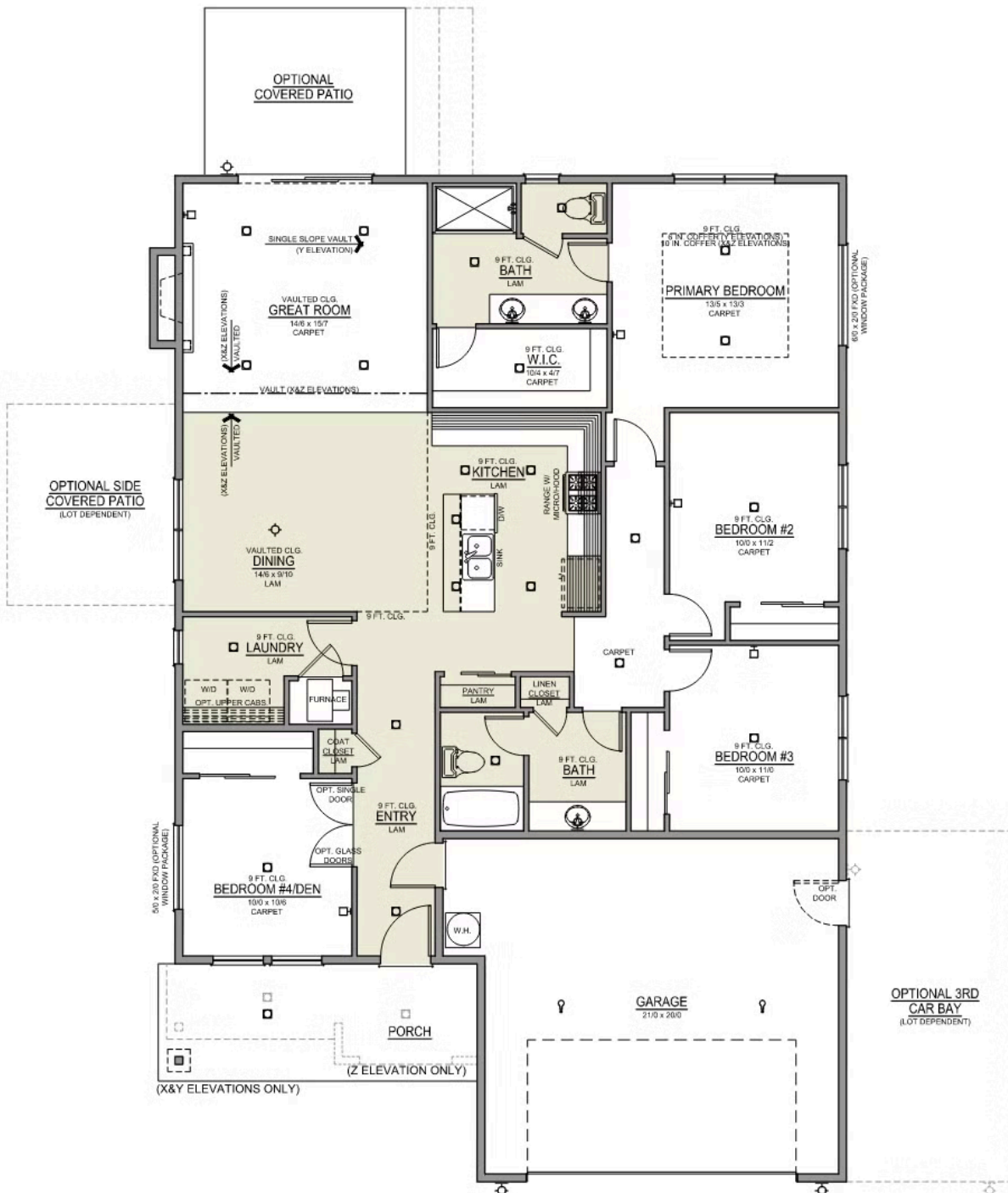
🚗 2 Car Garage

🏷 659,900

Charlotte 2-Car

1,701 Sq. Ft.

4 Bedroom, 2 Bath



Artisan's Village

OPTIONS

Charlotte Distinct
LOT 28

2883 NE Pinnacle Pl. Bend, OR 97701

 4 Bedrooms

 2 Bathrooms

 1,701 Sq. Ft.

 2 Car Garage

 659,900

- Interior Color Package: "Granite Shoreline". Painted Cabinets (All cabinets in house MUST be selected as "PAINTED")
- Exterior Color Package: Cascade Falls
- Light Fixtures: Acadia
- Doors: Hardware Standard. "Cove" knobs / "Amador" front door handle.
- Doors: Hardware Upgrade to "Ladera Levers"
- Bathroom: Upgrade finishes to BLACK - All bathrooms. Soaker Tub NOT included. (Plumbing Fixtures, bath accessories and shower door hardware)
- Bathroom: Shower Enclosure Glass Color Choice
- Electrical Package: Tech Package Pre Wire - Includes Panel, 110 outlet, 1 Dual Wall Plate (Coax & Ethernet) in Great Room
- Windows Package: Optional Windows
- Cabinets: Add Soft Close Doors and Drawers
- Laundry Room: Upper Cabinets:PAINTED- 36"
- Laundry Room: Upgrade from 36" Upper Cabinets to 42". - PAINTED (Distinct Series Only)
- Kitchen: 42" Cabinets (Distinct Series Only). PAINTED Kitchen & Bathroom Cabinets
- Cabinets: Knobs and Pulls
- Kitchen: Full Height Backsplash
- Counters: Quartz Counters and Backsplash in Kitchen
- Counters: Quartz Counters and Backsplash in Guest Bath
- Counters: Quartz Counters and Backsplash in Master Bath
- Bathroom: Tile Shower in Place of Fiberglass Shower. 5-ft Shower w/ Fiberglass Pan
- Covered Patio - Rear - 12x10
- Kitchen: Pendant Lights over Kitchen Island - In place of recessed LED
- Electrical: Recessed LEDs. Add 2 for 4 total+ Dimmer in Primary Bedroom.
- Kitchen: Under Cabinet Lighting
- Doors: Interior Double Doors Upgrade to Full Light Glass Double Doors. 8-0 doors (Distinct Series).
- Doors: Exterior Front Door. 5 PANEL 8-0. Satin Etch (Distinct Series Only)
- Doors Package: Upgrade to 5-Panel Interior Doors. *Includes Optional Interior Doors. 8/0 Interior Doors (Distinct Series Only)
- Man Door: Exterior door from garage to outside - Includes exterior coach light.
- Flooring: Great Room - Wood Laminate (Casita Court)
- Flooring: Hallway Down - Wood Laminate (Casita Court)
- Garage: Finished Garages -Base House: WallsTextured (Orange Peel), Primed & Painted.
- Garage: Garage Door Opener
- Garage: Garage Door Opener Wireless Keypad
- HVAC: Air Conditioner - PreWire not previously selected
- Fireplace: (Direct Vent) with Mantel and Stone Surround
- Garage: Insulated Garage - 2 Car Bays. Walls and Ceiling (Garage Door already insulated).
- Kitchen: Farm Sink - Stainless Steel Single Bowl
- Kitchen: Upgrade Faucet to Moen Arbor SRS

MonteVista
HOMES

541-699-1180

In a continual effort to improve our product, MonteVista Homes reserves the right to change product design, features, materials, floor plans, specifications, prices and terms without prior notice. Square footage stated or implied are approximate. Images may be representative of future home and show what's possible not what's included. Seller is a licensed real estate broker in the State of Oregon. CCB#203709

