

# Cimmaron Terrace

Jefferson Premier  
LOT 135

1730 NE 9th Pl. Hermiston, OR 97838

4 Bedrooms 2.5 Bathrooms 1,761 Sq. Ft. 3 Car Garage 389,900

UNDER CONSTRUCTION



- Guest Suite or Den on Main Level
- 9 Foot Ceilings on Main Level
- Kitchen Island with Sink
- Kitchen Corner Pantry

- Great Room with Fireplace
- Primary Suite with Walk-in Closet
- Quartz Countertops throughout Home
- Stainless Steel Appliances

MonteVista  
HOMES

541-403-5150

*In a continual effort to improve our product, MonteVista Homes reserves the right to change product design, features, materials, floor plans, specifications, prices and terms without prior notice. Square footage stated or implied are approximate. Images may be representative of future home and show what's possible not what's included. Seller is a licensed real estate broker in the State of Oregon. CCB#203709*



# Cimmaron Terrace

Jefferson Premier  
LOT 135

1730 NE 9th Pl. Hermiston, OR 97838

 4 Bedrooms

 2.5 Bathrooms

 1,761 Sq. Ft.

 3 Car Garage

 389,900

## Jefferson 2-Car

1,761 Sq. Ft.  
4 Bedroom, 2.5 Bath



MAIN FLOOR

# Cimmaron Terrace

Jefferson Premier  
LOT 135

1730 NE 9th Pl. Hermiston, OR 97838

 4 Bedrooms

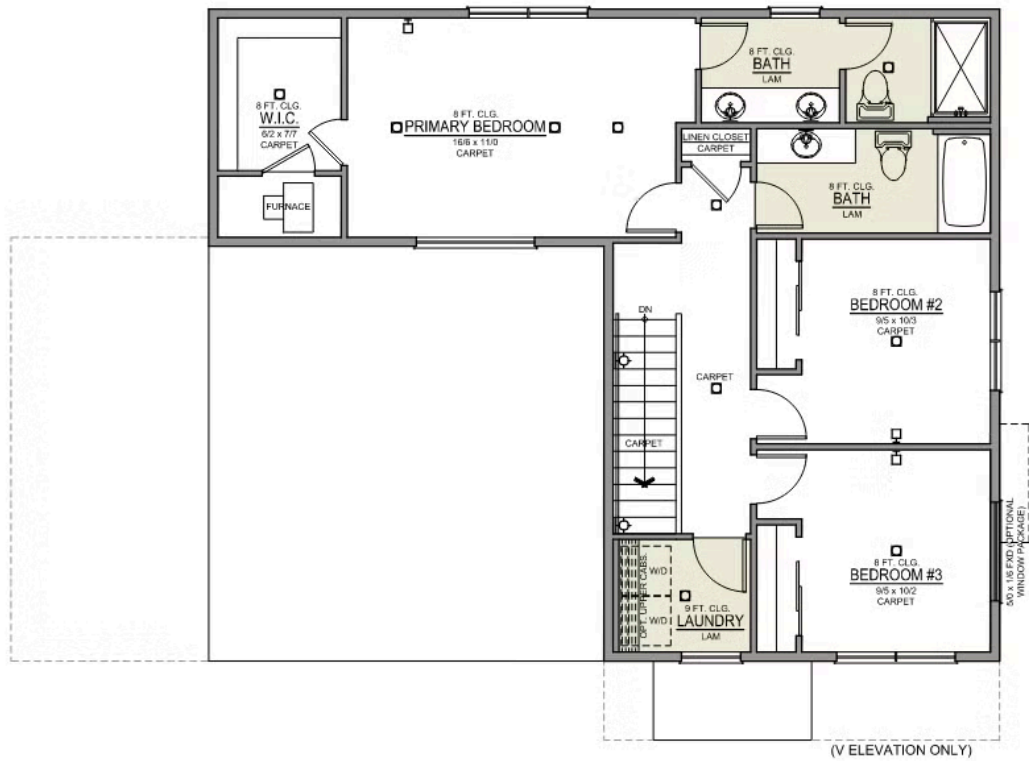
 2.5 Bathrooms

 1,761 Sq. Ft.

 3 Car Garage

 389,900

Jefferson 2-Car  
1,761 Sq. Ft.  
4 Bedroom, 2.5 Bath








UPPER FLOOR

# Cimmaron Terrace

## OPTIONS

Jefferson Premier  
LOT 135

1730 NE 9th Pl. Hermiston, OR 97838

 4 Bedrooms  2.5 Bathrooms  1,761 Sq. Ft.  3 Car Garage  389,900

- Interior Color Package: "Mountain Vogue". Painted Cabinets (All cabinets in house MUST be selected as "PAINTED")
- Exterior Color Package: Deschutes Frost
- Light Fixtures: Acadia
- Doors: Hardware Standard. "Cove" knobs / "Amador" front door handle.
- Bathroom: Shower Enclosure(s) Glass Color Choice
- Electrical: Tech Package Pre Wire - Includes Panel, 110 outlet, 1 Dual Wall Plate (Coax & Ethernet) in Great Room
- Windows Package: Optional Windows
- Kitchen: 30" Cabinets. PAINTED Kitchen & Bathroom Cabinets.
- Counters: Quartz Counters and Backsplash in Kitchen
- Counters: Quartz Counters and Backsplash in Guest Bath
- Counters: Quartz Counters and Backsplash in Primary Bath
- Bathroom: JEFFERSON only - Add 5' Fiberglass Walk-In Shower to downstairs Powder Room.
- Exterior Covered Patio: Rear - 12x10
- Kitchen: Pendant Lights over Kitchen Island - In place of recessed LED
- Electrical: Recessed LEDs. Add 2 for 4 total+ Dimmer in Primary Bedroom.
- Flooring: Great Room - Wood Laminate (Casita Court)
- Flooring: Hallway Up - Wood Laminate (Casita Court)
- Garage: Garage Door Opener
- Garage: Garage Door Opener Wireless Keypad
- Garage: Third Car Garage
- HVAC: Air Conditioner - PreWire not previously selected (Not available for Duets)
- Fireplace: Gas Fireplace (Direct Vent) with Mantel and Stone Surround
- Landscape: Backyard Landscaping. Up to a 60-ft wide lot
- Kitchen: Farm Sink - Stainless Steel Single Bowl
- Kitchen or Laundry Sink: Upgrade Faucet to Moen Arbor - Specify Color (Black or SRS), Quantity and Location(s)

MonteVista  
HOMES

541-403-5150

*In a continual effort to improve our product, MonteVista Homes reserves the right to change product design, features, materials, floor plans, specifications, prices and terms without prior notice. Square footage stated or implied are approximate. Images may be representative of future home and show what's possible not what's included. Seller is a licensed real estate broker in the State of Oregon. CCB#203709*

