

# Cimmaron Terrace

Jefferson Premier  
LOT 134

1734 NE 9th Pl. Hermiston, OR 97838

4 Bedrooms

3 Bathrooms

1,761 Sq. Ft.

2 Car Garage

379,900

UNDER CONSTRUCTION



V - FARMHOUSE



- Guest Suite or Den on Main Level
- 9 Foot Ceilings on Main Level
- Kitchen Island with Sink
- Kitchen Corner Pantry

- Great Room with Fireplace
- Primary Suite with Walk-in Closet
- Quartz Countertops throughout Home
- Stainless Steel Appliances

MonteVista  
HOMES

541-403-5150

In a continual effort to improve our product, MonteVista Homes reserves the right to change product design, features, materials, floor plans, specifications, prices and terms without prior notice. Square footage stated or implied are approximate. Images may be representative of future home and show what's possible not what's included. Seller is a licensed real estate broker in the State of Oregon. CCB#203709



# Cimmaron Terrace

Jefferson Premier  
LOT 134

1734 NE 9th Pl. Hermiston, OR 97838

🛏 4 Bedrooms

🚿 3 Bathrooms

🏠 1,761 Sq. Ft.

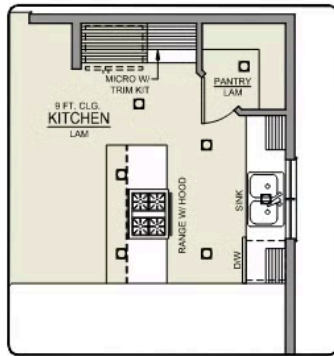
🚗 2 Car Garage

💰 379,900

## Jefferson 2-Car

1,761 Sq. Ft.

4 Bedroom, 2.5 Bath



ISLAND HOOD OPTION



BATHROOM OPTION



MAIN FLOOR

# Cimmaron Terrace

Jefferson Premier  
LOT 134

1734 NE 9th Pl. Hermiston, OR 97838

🛏 4 Bedrooms

🚿 3 Bathrooms

🏠 1,761 Sq. Ft.

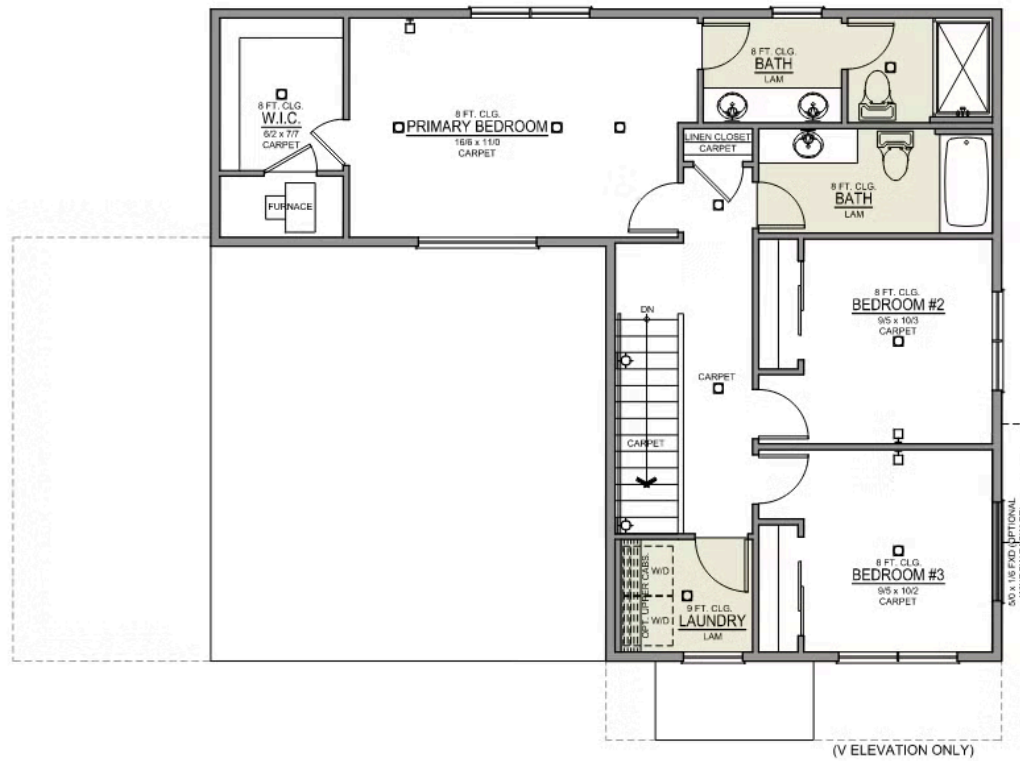
🚗 2 Car Garage

🏷 379,900

## Jefferson 2-Car

1,761 Sq. Ft.

4 Bedroom, 2.5 Bath



UPPER FLOOR

# Cimmaron Terrace

## OPTIONS

Jefferson Premier  
LOT 134

1734 NE 9th Pl. Hermiston, OR 97838

 4 Bedrooms

 3 Bathrooms

 1,761 Sq. Ft.

 2 Car Garage

 379,900

- Interior Color Package: "Urban Oasis"
- Exterior Color Package: Rustic Woods
- Light Fixtures: Acadia
- Doors: Hardware Standard. "Cove" knobs / "Amador" front door handle.
- Bathroom: Upgraded finishes in BLACK. Soaker Tub NOT included. All bathrooms. (Plumbing Fixtures, bath accessories and shower door hardware)
- Bathroom: Shower Enclosure(s) Glass Color Choice
- Electrical: Tech Package Pre Wire - Includes Panel, 110 outlet, 1 Dual Wall Plate (Coax & Ethernet) in Great Room
- Windows Package: Optional Windows
- Counters: Quartz Counters and Backsplash in Kitchen
- Counters: Quartz Counters and Backsplash in Guest Bath
- Counters: Quartz Counters and Backsplash in Primary Bath
- Bathroom: JEFFERSON only - Add 5' Fiberglass Walk-In Shower to downstairs Powder Room.
- Exterior Covered Patio: Rear - 12x10
- Kitchen: Pendant Lights over Kitchen Island - In place of recessed LED
- Electrical: Recessed LEDs. Add 2 for 4 total+ Dimmer in Primary Bedroom.
- Flooring: Great Room - Wood Laminate (Casita Court)
- Flooring: Hallway Up - Wood Laminate (Casita Court)
- Garage: Garage Door Opener
- Garage: Garage Door Opener Wireless Keypad
- HVAC: Air Conditioner - PreWire not previously selected (Not available for Duets)
- Fireplace: Gas Fireplace (Direct Vent) with Mantel and Stone Surround
- Kitchen: Farm Sink - Stainless Steel Single Bowl
- Kitchen or Laundry Sink: Upgrade Faucet to Moen Arbor - Specify Color (Black or SRS), Quantity and Location(s)

**MonteVista**  
HOMES

**541-403-5150**

*In a continual effort to improve our product, MonteVista Homes reserves the right to change product design, features, materials, floor plans, specifications, prices and terms without prior notice. Square footage stated or implied are approximate. Images may be representative of future home and show what's possible not what's included. Seller is a licensed real estate broker in the State of Oregon. CCB#203709*

