

Cimmaron Terrace

Metolius Premier
LOT 17

1555 NE 8th Pl. Hermiston, OR 97838

🏠 4 Bedrooms

🚿 3 Bathrooms

📏 2,095 Sq. Ft.

🚗 2 Car Garage

🏷️ 429,900

UNDER CONSTRUCTION



T - TRADITIONAL, 2 CAR



- Upstairs Flex Space/ Loft
- Kitchen Island with Sink
- Corner Kitchen Pantry
- Main Level Guest Suite or Office
- Great Room with Gas Fireplace

- Primary Suite with Walk-in Closet
- Quartz Countertops throughout Home
- Stainless Steel Appliances
- 9 Foot Ceilings throughout Main Level

MonteVista
HOMES

541-403-5150

In a continual effort to improve our product, MonteVista Homes reserves the right to change product design, features, materials, floor plans, specifications, prices and terms without prior notice. Square footage stated or implied are approximate. Images may be representative of future home and show what's possible not what's included. Seller is a licensed real estate broker in the State of Oregon. CCB#203709



Cimmaron Terrace

Metolius Premier LOT 17

1555 NE 8th Pl. Hermiston, OR 97838

 4 Bedrooms

 3 Bathrooms

 2,095 Sq. Ft.

 2 Car Garage

 429,900

Metolius 2-Car

2,095 Sq. Ft.

4 Bedroom, 3 Bath



Cimmaron Terrace

Metolius Premier
LOT 17

1555 NE 8th Pl. Hermiston, OR 97838

🛏 4 Bedrooms

🚿 3 Bathrooms

🏠 2,095 Sq. Ft.

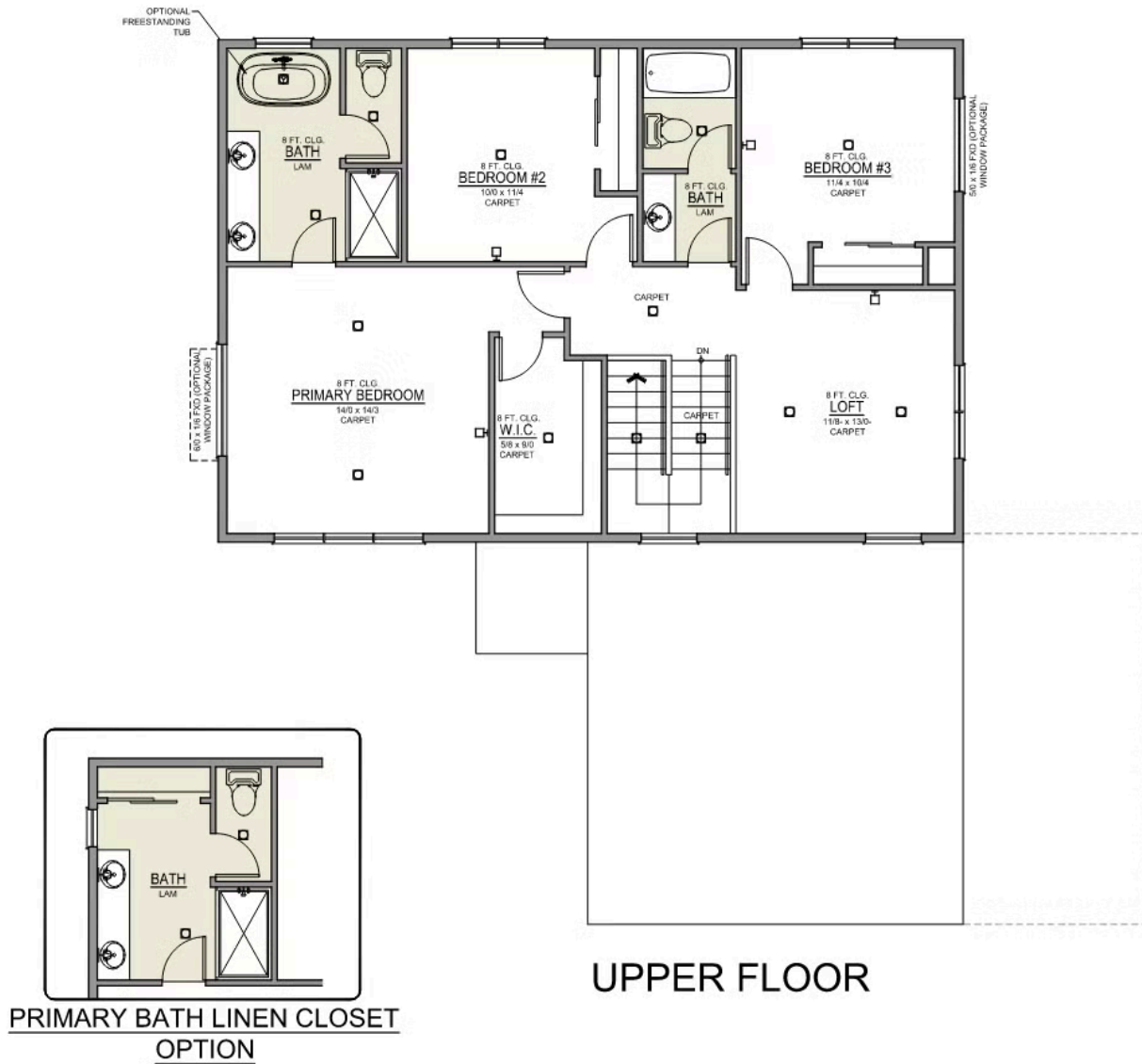
🚗 2 Car Garage

🏷 429,900

Metolius 2-Car

2,095 Sq. Ft.

4 Bedroom, 3 Bath



Cimmaron Terrace

OPTIONS

Metolius Premier
LOT 17

1555 NE 8th Pl. Hermiston, OR 97838

 4 Bedrooms

 3 Bathrooms

 2,095 Sq. Ft.

 2 Car Garage

 429,900

- Interior Color Package: "Crystal Heights". Painted Cabinets (All cabinets in house MUST be selected as "PAINTED")
- Exterior Color Package: Deschutes Frost
- Light Fixtures: Acadia
- Doors: Hardware Standard. "Cove" knobs / "Amador" front door handle.
- Bathroom: Upgrade finishes to BLACK. Soaker Tub INCLUDED. All bathrooms. (Plumbing Fixtures, bath accessories and shower door hardware)
- Bathroom: Shower Enclosure Glass Color Choice
- Corner Lot Exterior Package: Includes Window trim on Corner Side, Flatwork and Corner Lot Landscaping
- Electrical: Tech Package Pre Wire - Includes Panel, 110 outlet, 1 Dual Wall Plate (Coax & Ethernet) in Great Room
- Windows Package: Optional Windows
- Kitchen: Island Range with Hood. 36" Cabinets. PAINTED Kitchen & Bathroom Cabinets. Sliding Window over the sink.
- Laundry Room: Add Lower PAINTED Cabs. With Quartz Top and Backsplash.
- Counters: Quartz Counters and Backsplash in Kitchen
- Counters: Quartz Counters and Backsplash in Guest Bath
- Counters: Quartz Counters and Backsplash in Master Bath
- Exterior Covered Patio: Side - 12x10
- Electrical: Recessed LEDs. Add 2 for 4 total+ Dimmer in Primary Bedroom.
- Doors Package: Add Optional 6/8 Interior Doors (Premier Series Only)
- Doors: Kitchen Pantry Door w/ Glass. Frosted & Border.
- Flooring: Hallway Up - Wood Laminate (Casita Court)
- Garage: Garage Door Opener
- Garage: Garage Door Opener Wireless Keypad
- HVAC: Air Conditioner - PreWire not previously selected
- Fireplace: (Direct Vent) with Mantel and Stone Surround
- Exterior: Stone on all Front Column(s)
- Kitchen: Farm Sink - Stainless Steel Single Bowl
- Kitchen or Laundry Sink: Upgrade Faucet to Moen Arbor - Specify Color (Black or SRS), Quantity and Location(s)
- Bathroom: Freestanding Soaker Tub

MonteVista
HOMES

541-403-5150

In a continual effort to improve our product, MonteVista Homes reserves the right to change product design, features, materials, floor plans, specifications, prices and terms without prior notice. Square footage stated or implied are approximate. Images may be representative of future home and show what's possible not what's included. Seller is a licensed real estate broker in the State of Oregon. CCB#203709

