

Cimmaron Terrace

Miranda Premier
LOT 140

1733 NE 9th Ct. Hermiston, OR 97838

4 Bedrooms 3 Bathrooms 2,517 Sq. Ft. 2 Car Garage 449,900

UNDER CONSTRUCTION



V - FARMHOUSE



- 9 Foot Ceilings throughout Main Level
- Great Room with Fireplace
- Kitchen Island with Sink
- Kitchen Pantry

- Upstairs Bonus Room / Loft
- Primary Suite with Walk-in Closet
- Quartz Countertops throughout Home
- Stainless Steel Appliances

MonteVista
HOMES

541-403-5150

In a continual effort to improve our product, MonteVista Homes reserves the right to change product design, features, materials, floor plans, specifications, prices and terms without prior notice. Square footage stated or implied are approximate. Images may be representative of future home and show what's possible not what's included. Seller is a licensed real estate broker in the State of Oregon. CCB#203709



Cimmaron Terrace

Miranda Premier
LOT 140

1733 NE 9th Ct. Hermiston, OR 97838

 4 Bedrooms

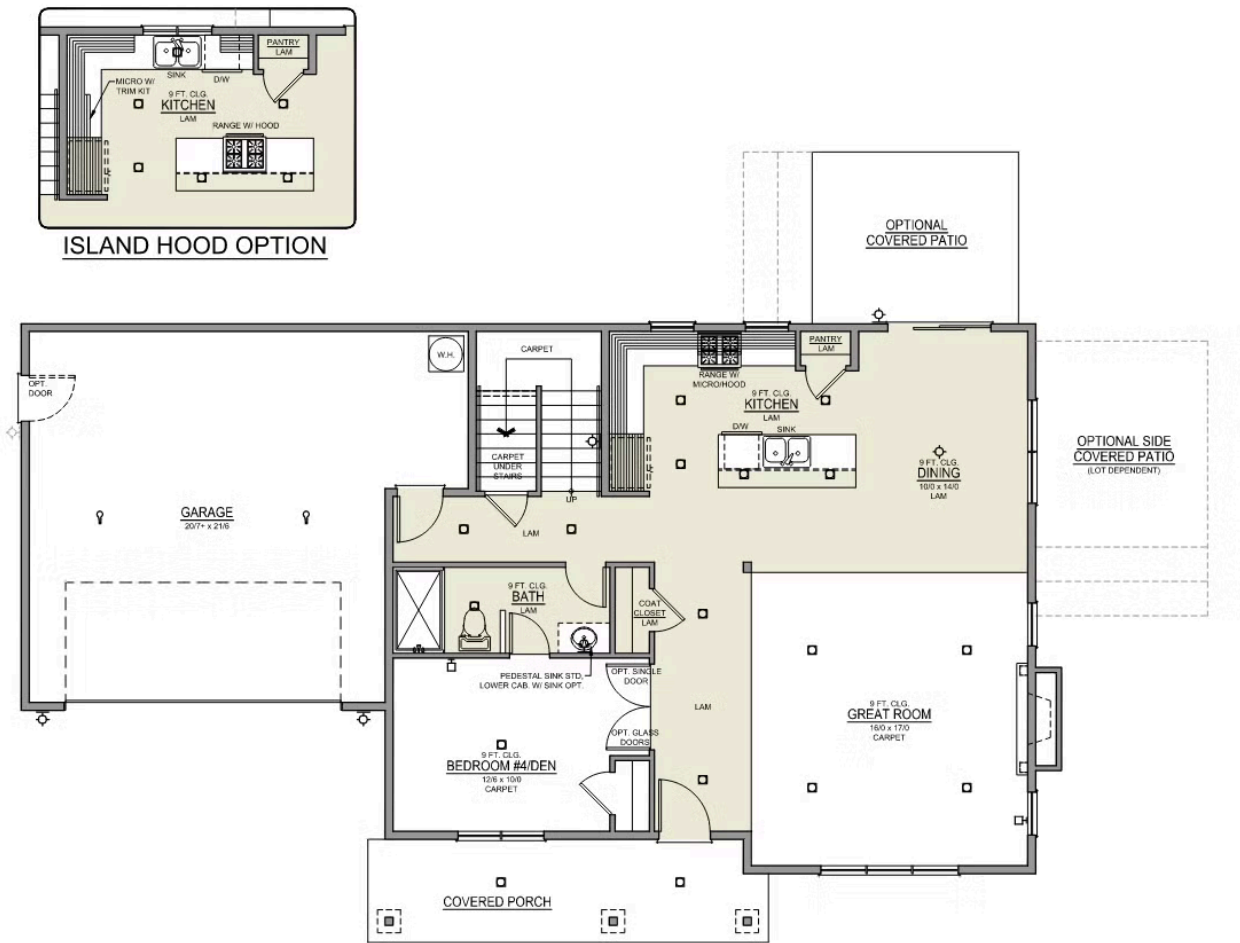
 3 Bathrooms

 2,517 Sq. Ft.

 2 Car Garage

 449,900

Miranda 2-Car
2,517 Sq. Ft.
4 Bedroom, 3 Bath



MAIN FLOOR

Cimmaron Terrace

Miranda Premier
LOT 140

1733 NE 9th Ct. Hermiston, OR 97838

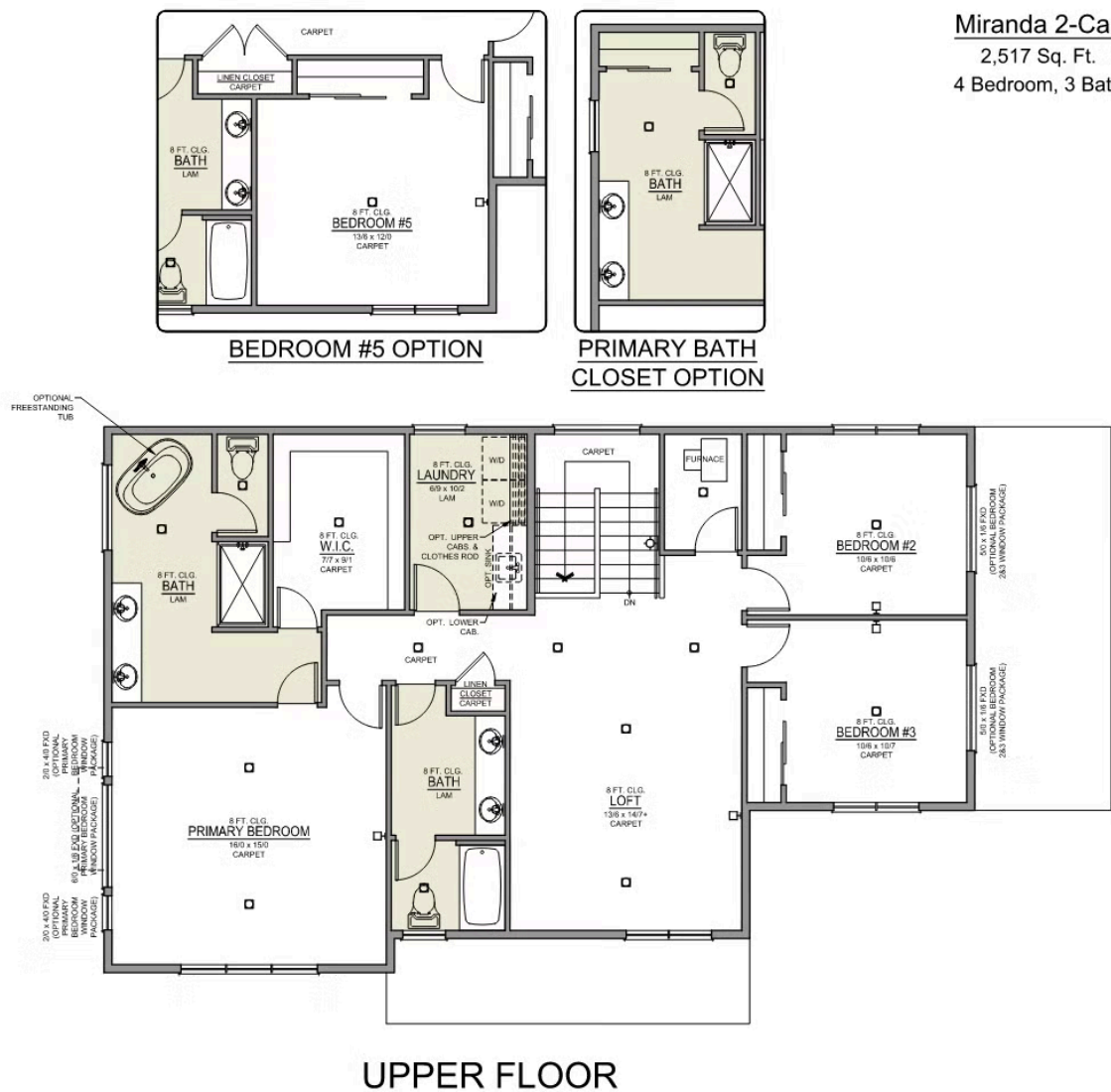
 4 Bedrooms

 3 Bathrooms

 2,517 Sq. Ft.

 2 Car Garage

 449,900




Cimmaron Terrace

OPTIONS

Miranda Premier
LOT 140

1733 NE 9th Ct. Hermiston, OR 97838

 4 Bedrooms  3 Bathrooms  2,517 Sq. Ft.  2 Car Garage  449,900

- Interior Color Package: "Crystal Heights". Painted Cabinets (All cabinets in house MUST be selected as "PAINTED")
- Exterior Color Package: Rustic Woods
- Light Fixtures: Acadia
- Doors: Hardware Standard. "Cove" knobs / "Amador" front door handle.
- Bathroom: Upgrade finishes to BLACK. Soaker Tub INCLUDED. All bathrooms. (Plumbing Fixtures, bath accessories and shower door hardware)
- Bathroom: Shower Enclosure(s) Glass Color Choice
- Electrical: Tech Package Pre Wire - Includes Panel, 110 outlet, 1 Dual Wall Plate (Coax & Ethernet) in Great Room
- Windows Package: Optional Windows
- Kitchen: 36" Cabinets. PAINTED Kitchen & Bathroom Cabinets.
- Cabinets: Color of Knobs and Pulls
- Counters: Quartz Counters and Backsplash in Kitchen
- Counters: Quartz Counters and Backsplash in Guest Bath
- Counters: Quartz Counters and Backsplash in Primary Bath
- Exterior Covered Patio: Side - 12x10
- Kitchen: Pendant Lights over Kitchen Island - In place of recessed LED
- Electrical: Recessed LEDs. Add 2 for 4 total+ Dimmer in Primary Bedroom.
- Electrical: Recessed LEDs. Add 2 for 4 total + Dimmer in Bonus Room, Loft, or Origin Series.
- Fencing: Cedar, Dog-eared, 6' tall. (50 ft Min. Order)
- Fencing: 4' wide Walk Gate. Cedar, Dog-eared, 6' tall.
- Flooring: Great Room - Wood Laminate (Casita Court)
- Flooring: Hallway Up - Wood Laminate (Casita Court)
- Garage: Garage Door Opener
- Garage: Garage Door Opener Wireless Keypad
- HVAC: Air Conditioner - PreWire not previously selected (Not available for Duets)
- Fireplace: Gas Fireplace (Direct Vent) with Mantel and Stone Surround
- Landscape: Backyard Landscaping. Up to a 60-ft wide lot
- Kitchen: Farm Sink - Stainless Steel Single Bowl
- Kitchen or Laundry Sink: Upgrade Faucet to Moen Arbor - Specify Color (Black or SRS), Quantity and Location(s)
- Bathroom: Freestanding Soaker Tub

MonteVista
HOMES

541-403-5150

In a continual effort to improve our product, MonteVista Homes reserves the right to change product design, features, materials, floor plans, specifications, prices and terms without prior notice. Square footage stated or implied are approximate. Images may be representative of future home and show what's possible not what's included. Seller is a licensed real estate broker in the State of Oregon. CCB#203709

