

Cimmaron Terrace

Thielsen Premier
LOT 28

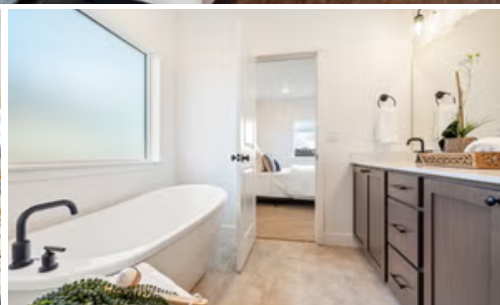
1620 NE 8th Pl. Hermiston, OR 97838

 4 Bedrooms  2.5 Bathrooms  2,373 Sq. Ft.  2 Car Garage  443,900

MOVE-IN READY



U - CRAFTSMAN, 2 CAR



- Primary Suite on Main Level
- Walk-in Closet in Primary
- Great Room with Gas Fireplace
- Upstairs Bonus Room / Loft
- Kitchen Island and Pantry

- 9 Foot Ceilings throughout the Main Level
- Quartz Countertops throughout the Home
- Stainless Steel Appliances
- Covered Front Porch
- Sales incentive see agent for details

MonteVista
HOMES

541-403-5150

In a continual effort to improve our product, MonteVista Homes reserves the right to change product design, features, materials, floor plans, specifications, prices and terms without prior notice. Square footage stated or implied are approximate. Images may be representative of future home and show what's possible not what's included. Seller is a licensed real estate broker in the State of Oregon. CCB#203709




Cimmaron Terrace

Thielsen Premier
LOT 28

1620 NE 8th Pl. Hermiston, OR 97838

 4 Bedrooms

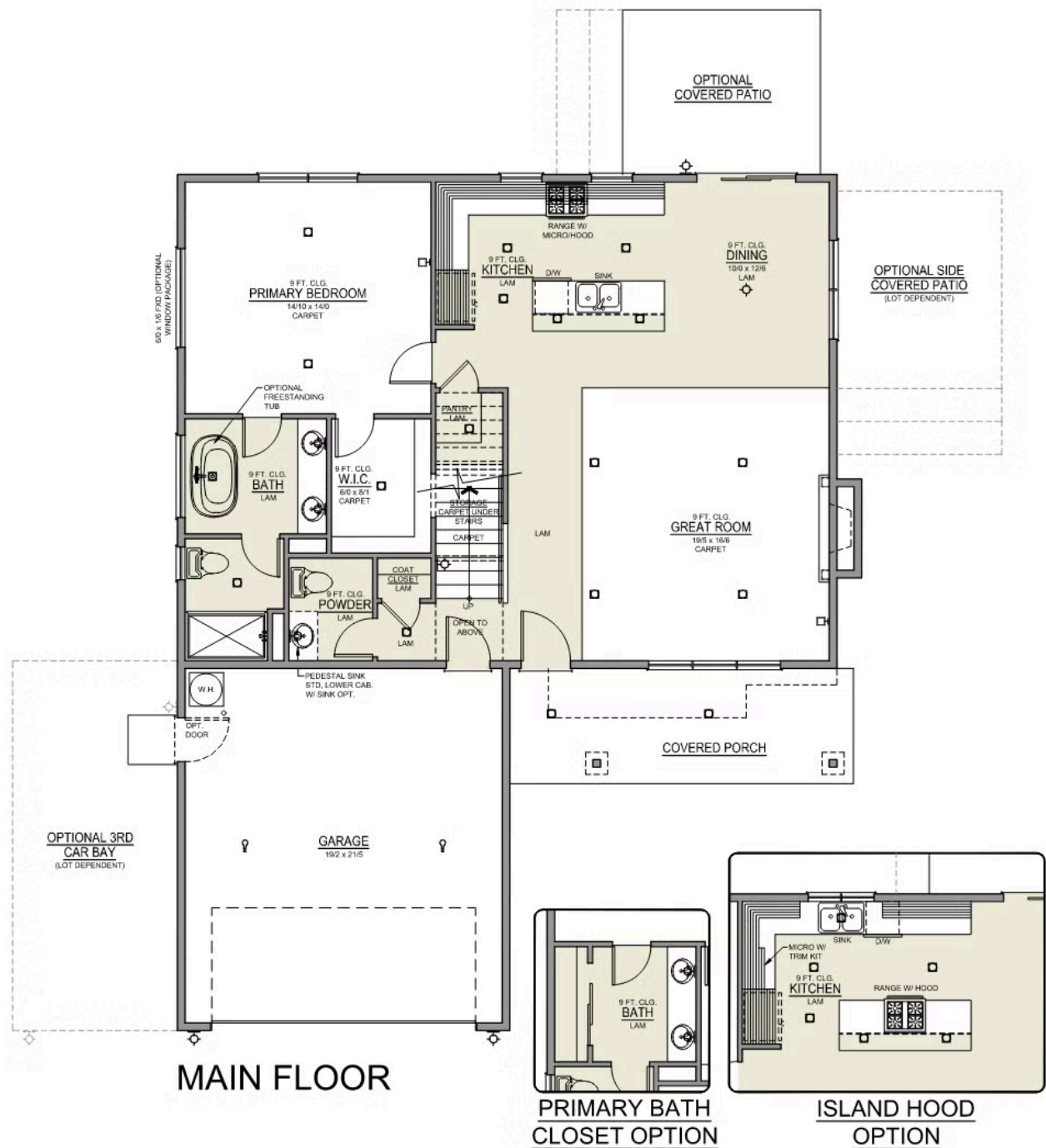
 2.5 Bathrooms

 2,373 Sq. Ft.

 2 Car Garage

 443,900

Thielsen 2-Car
2,373 Sq. Ft.
4 Bedroom, 3 Bath




Cimmaron Terrace

Thielsen Premier
LOT 28

1620 NE 8th Pl. Hermiston, OR 97838

 4 Bedrooms

 2.5 Bathrooms

 2,373 Sq. Ft.

 2 Car Garage

 443,900

Thielsen 2-Car
2,373 Sq. Ft.
4 Bedroom, 3 Bath



UPPER FLOOR

Cimmaron Terrace

OPTIONS

Thielsen Premier
LOT 28

1620 NE 8th Pl. Hermiston, OR 97838

 4 Bedrooms  2.5 Bathrooms  2,373 Sq. Ft.  2 Car Garage  443,900

- Interior Color Package: "Horizon Pine"
- Exterior Color Package: Cascade Falls
- Light Fixtures: Acadia
- Doors: Hardware Standard. "Cove" knobs / "Amador" front door handle.
- Bathroom: Upgrade finishes to BLACK - All bathrooms. Soaker Tub INCLUDED. (Plumbing Fixtures, bath accessories and shower door hardware)
- Bathroom: Shower Enclosure Glass Color Choice
- Electrical Package: Tech Package Pre Wire - Includes Panel, 110 outlet, 1 Dual Wall Plate (Coax & Ethernet) in Great Room
- Windows Package: Optional Windows
- Kitchen: Island Range and Hood. 30" Cabinets. Sliding Window over the sink.
- Laundry Room: Lower Cabs With Quartz Top and Backsplash With Optional Sink & Pull-Out Faucet SRS
- Cabinets: Knobs and Pulls
- Counters: Quartz Counters and Backsplash in Kitchen
- Counters: Quartz Counters and Backsplash in Guest Bath
- Counters: Quartz Counters and Backsplash in Master Bath
- Exterior Covered Patio: Rear - 12x10
- Electrical: Recessed LEDs. Add 2 for 4 total+ Dimmer in Primary Bedroom.
- Electrical: Recessed LEDs. Add 2 for 4 total + Dimmer in Bonus Room or Loft
- Doors Package: Add Optional 6/8 Interior Doors (Premier Series Only)
- Flooring: Great Room - Wood Laminate (Casita Court)
- Garage: Garage Door Opener
- Garage: Garage Door Opener Wireless Keypad
- HVAC: Air Conditioner - PreWire not previously selected
- Fireplace: (Direct Vent) with Mantel and Stone Surround
- Landscape: Backyard Landscaping. Up to a 60-ft wide lot
- Kitchen: Farm Sink - Stainless Steel Single Bowl
- Kitchen: Upgrade Faucet to Moen Arbor SRS
- Bathroom: Freestanding Soaker Tub

MonteVista
HOMES

541-403-5150

In a continual effort to improve our product, MonteVista Homes reserves the right to change product design, features, materials, floor plans, specifications, prices and terms without prior notice. Square footage stated or implied are approximate. Images may be representative of future home and show what's possible not what's included. Seller is a licensed real estate broker in the State of Oregon. CCB#203709

