

Cimmaron Terrace

Thielsen Premier
LOT 32

1588 NE 8th Pl. Hermiston, OR 97838

4 Bedrooms 2.5 Bathrooms 2,373 Sq. Ft. 2 Car Garage 449,900

UNDER CONSTRUCTION



V - FARMHOUSE, 2 CAR



- Primary Suite on Main Level with Walk-in Closet
- Great Room with Fireplace
- Upstairs Bonus Room / Loft
- Kitchen Island and Pantry
- 9 Foot Ceilings throughout Main Level
- Quartz Countertops throughout the Home
- Stainless Steel Appliances

MonteVista
HOMES

541-403-5150

In a continual effort to improve our product, MonteVista Homes reserves the right to change product design, features, materials, floor plans, specifications, prices and terms without prior notice. Square footage stated or implied are approximate. Images may be representative of future home and show what's possible not what's included. Seller is a licensed real estate broker in the State of Oregon. CCB#203709



Cimmaron Terrace

Thielsen Premier
LOT 32

1588 NE 8th Pl. Hermiston, OR 97838

🛏 4 Bedrooms

🚿 2.5 Bathrooms

🏠 2,373 Sq. Ft.

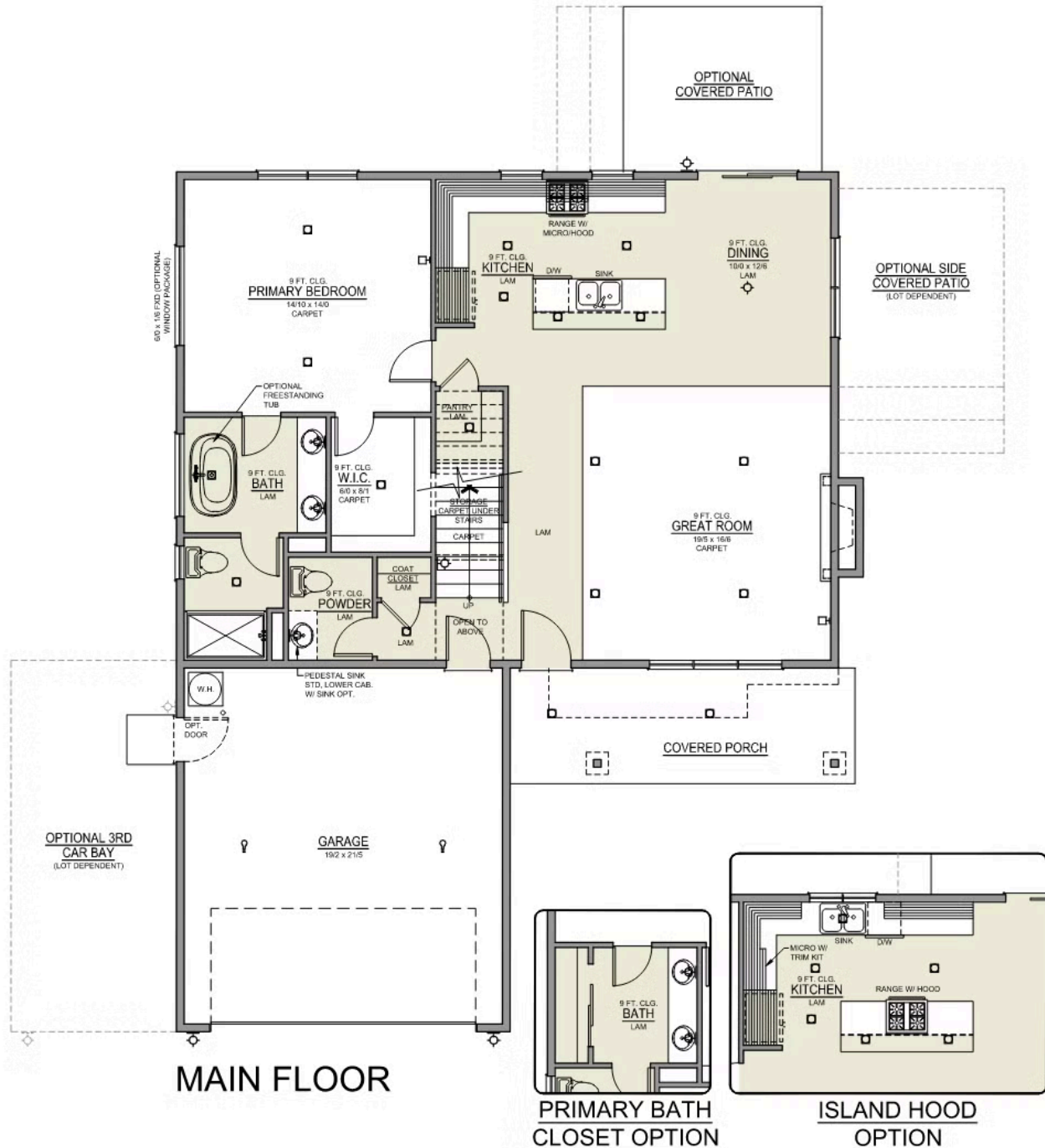
🚗 2 Car Garage

💰 449,900

Thielsen 2-Car

2,373 Sq. Ft.

4 Bedroom, 3 Bath



Cimmaron Terrace

Thielsen Premier
LOT 32

1588 NE 8th Pl. Hermiston, OR 97838

4 Bedrooms

2.5 Bathrooms

2,373 Sq. Ft.

2 Car Garage

449,900

Thielsen 2-Car

2,373 Sq. Ft.

4 Bedroom, 3 Bath



UPPER FLOOR

Cimmaron Terrace

OPTIONS

Thielsen Premier
LOT 32

1588 NE 8th Pl. Hermiston, OR 97838

 4 Bedrooms

 2.5 Bathrooms

 2,373 Sq. Ft.

 2 Car Garage

 449,900

- Interior Color Package: "Granite Shoreline". Painted Cabinets (All cabinets in house MUST be selected as "PAINTED")
- Exterior Color Package: Rustic Woods
- Light Fixtures: Acadia
- Doors: Hardware Standard. "Cove" knobs / "Amador" front door handle.
- Bathroom: Upgrade finishes to BLACK. Soaker Tub INCLUDED. All bathrooms. (Plumbing Fixtures, bath accessories and shower door hardware)
- Bathroom: Shower Enclosure Glass Color Choice
- Electrical: Tech Package Pre Wire - Includes Panel, 110 outlet, 1 Dual Wall Plate (Coax & Ethernet) in Great Room
- Windows Package: Optional Windows
- Kitchen: Island Range with Hood. 36" Cabinets. PAINTED Kitchen & Bathroom Cabinets. Sliding Window over the sink.
- Laundry Room: Add Upper PAINTED 30" Cabinets above Washer/Dryer.
- Laundry Room: Add Lower PAINTED Cabs. With Quartz Top and Backsplash.
- Counters: Quartz Counters and Backsplash in Kitchen
- Counters: Quartz Counters and Backsplash in Guest Bath
- Counters: Quartz Counters and Backsplash in Master Bath
- Exterior Covered Patio: Rear - 12x10
- Electrical: Recessed LEDs. Add 2 for 4 total+ Dimmer in Primary Bedroom.
- Electrical: Recessed LEDs. Add 2 for 4 total + Dimmer in Bonus Room, Loft, or Origin Series.
- Doors Package: Add Optional 6/8 Interior Doors (Premier Series Only)
- Doors: Kitchen Pantry Door w/ Glass. Frosted & Border.
- Flooring: Great Room - Wood Laminate (Casita Court)
- Flooring: Hallway Up - Wood Laminate (Casita Court)
- Garage: Garage Door Opener
- Garage: Garage Door Opener Wireless Keypad
- HVAC: Air Conditioner - PreWire not previously selected
- Fireplace: (Direct Vent) with Mantel and Stone Surround
- Kitchen: Farm Sink - Stainless Steel Single Bowl
- Kitchen or Laundry Sink: Upgrade Faucet to Moen Arbor - Specify Color (Black or SRS), Quantity and Location(s)
- Bathroom: Freestanding Soaker Tub

MonteVista
HOMES

541-403-5150

In a continual effort to improve our product, MonteVista Homes reserves the right to change product design, features, materials, floor plans, specifications, prices and terms without prior notice. Square footage stated or implied are approximate. Images may be representative of future home and show what's possible not what's included. Seller is a licensed real estate broker in the State of Oregon. CCB#203709

