

# Upland Meadows

Aspen Premier  
LOT 7

862 NE Laurel Springs Dr Hermiston, OR 97838

3 Bedrooms 2 Bathrooms 1,702 Sq. Ft. 2 Car Garage 374,900

UNDER CONSTRUCTION



T - TRADITIONAL



- Quartz Countertops throughout Home
- Stainless Steel Appliances
- Kitchen Island with Sink
- Corner Kitchen Pantry

- Great Room with Electric Fireplace
- Primary Suite with Walk-in Closet
- Laundry/Mud Room Access from garage

MonteVista  
HOMES

541-403-5150

*In a continual effort to improve our product, MonteVista Homes reserves the right to change product design, features, materials, floor plans, specifications, prices and terms without prior notice. Square footage stated or implied are approximate. Images may be representative of future home and show what's possible not what's included. Seller is a licensed real estate broker in the State of Oregon. CCB#203709*



Upland Meadows

Aspen Premier  
LOT 7

862 NE Laurel Springs Dr Hermiston, OR 97838

3 Bedrooms

2 Bathrooms

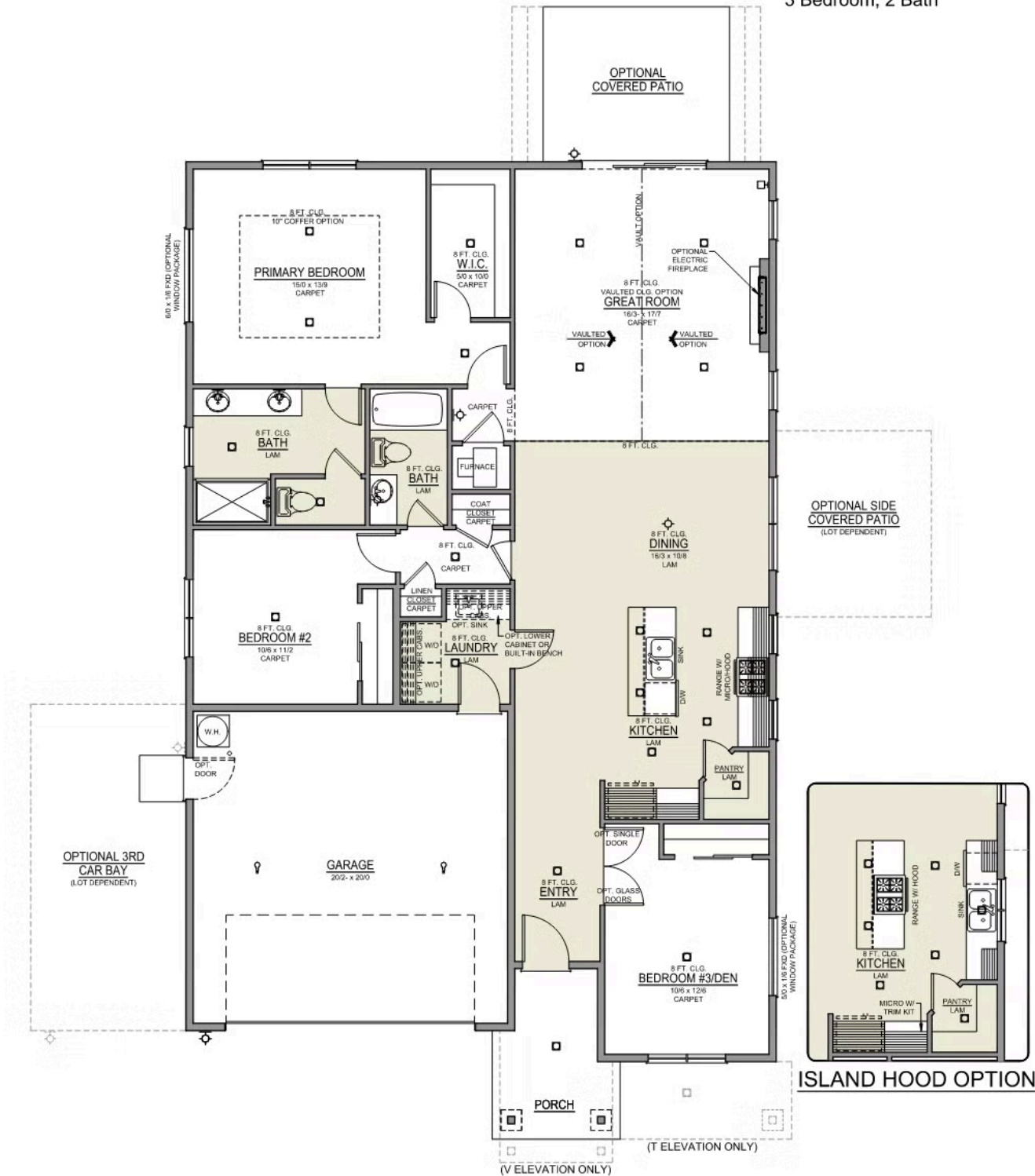
1,702 Sq. Ft.

2 Car Garage

374,900

Aspen 2-Car

1,702 Sq. Ft.  
3 Bedroom, 2 Bath




# Upland Meadows

## OPTIONS

Aspen Premier  
LOT 7

862 NE Laurel Springs Dr Hermiston, OR 97838

 3 Bedrooms  2 Bathrooms  1,702 Sq. Ft.  2 Car Garage  374,900

- Interior Color Package: "Urban Oasis". Comes with Stained Cabinets.
- Interior Walls/Trim: Walls - "Drift of Mist" , Trim - "Pure White"
- Exterior Color Package: Deschutes Frost
- Light Fixtures: Acadia
- Doors: Standard Hardware. Cove knobs / Amador front door handle.
- Bathroom: Upgraded finishes in BLACK. Soaker Tub NOT included. All bathrooms. (Plumbing Fixtures, bath accessories and shower door hardware)
- Bathroom: Every Glass Shower Enclosure - Color Choice - "Clear Glass".
- Electrical: Tech Package Pre Wire - Includes Panel, 110 outlet, 1 Dual Wall Plate (Coax & Ethernet) in Great Room
- Ceilings: (Premier Series Only) Vault in Great Room and Coffered Ceiling in Primary Bedroom.
- Kitchen: Base House (Premier/Origin). Wall Range, 30" STAINED Cabinets (All Kitchen & Bath Cabs Stained).
- Cabinets: Specify Color of Knobs and Pulls
- Counters: Quartz Counters and Backsplash (6") in Kitchen
- Counters: Quartz Counters and Backsplash in Guest Bath
- Counters: Quartz Counters and Backsplash in Primary Bath
- Exterior Covered Patio: Rear - 12x10
- Fencing: Cedar, Dog-eared, 6' tall. (50 ft Min. Order)
- Fencing: 4' wide Walk Gate. Cedar, Dog-eared, 6' tall.
- Flooring: Hallway Down - Wood Laminate (Casita Court)
- Garage: Garage Door Opener
- Garage: Garage Door Opener Wireless Keypad
- HVAC: System - Air Conditioner (Includes PreWire).  
\*Not available for Duets.
- Fireplace: Electric Fireplace - Drywall Only w/ Mantle
- Landscape: Backyard Landscaping. Up to a 60-ft wide lot

MonteVista  
HOMES

541-403-5150

*In a continual effort to improve our product, MonteVista Homes reserves the right to change product design, features, materials, floor plans, specifications, prices and terms without prior notice. Square footage stated or implied are approximate. Images may be representative of future home and show what's possible not what's included. Seller is a licensed real estate broker in the State of Oregon. CCB#203709*

