

# Upland Meadows

Camellia Premier  
LOT 24

876 E Kinsley Ave Hermiston, OR 97838

3 Bedrooms 2 Bathrooms 1,249 Sq. Ft. 2 Car Garage 339,997

UNDER CONSTRUCTION



V - FARMHOUSE



- Quartz Countertops throughout Home
- Stainless Steel Appliances
- Kitchen Island with Sink

- Great Room with Electric Fireplace
- Laundry/Mud Room access from garage

MonteVista  
HOMES

541-403-5150

*In a continual effort to improve our product, MonteVista Homes reserves the right to change product design, features, materials, floor plans, specifications, prices and terms without prior notice. Square footage stated or implied are approximate. Images may be representative of future home and show what's possible not what's included. Seller is a licensed real estate broker in the State of Oregon. CCB#203709*



# Upland Meadows

Camellia Premier

LOT 24

876 E Kinsley Ave Hermiston, OR 97838

3 Bedrooms

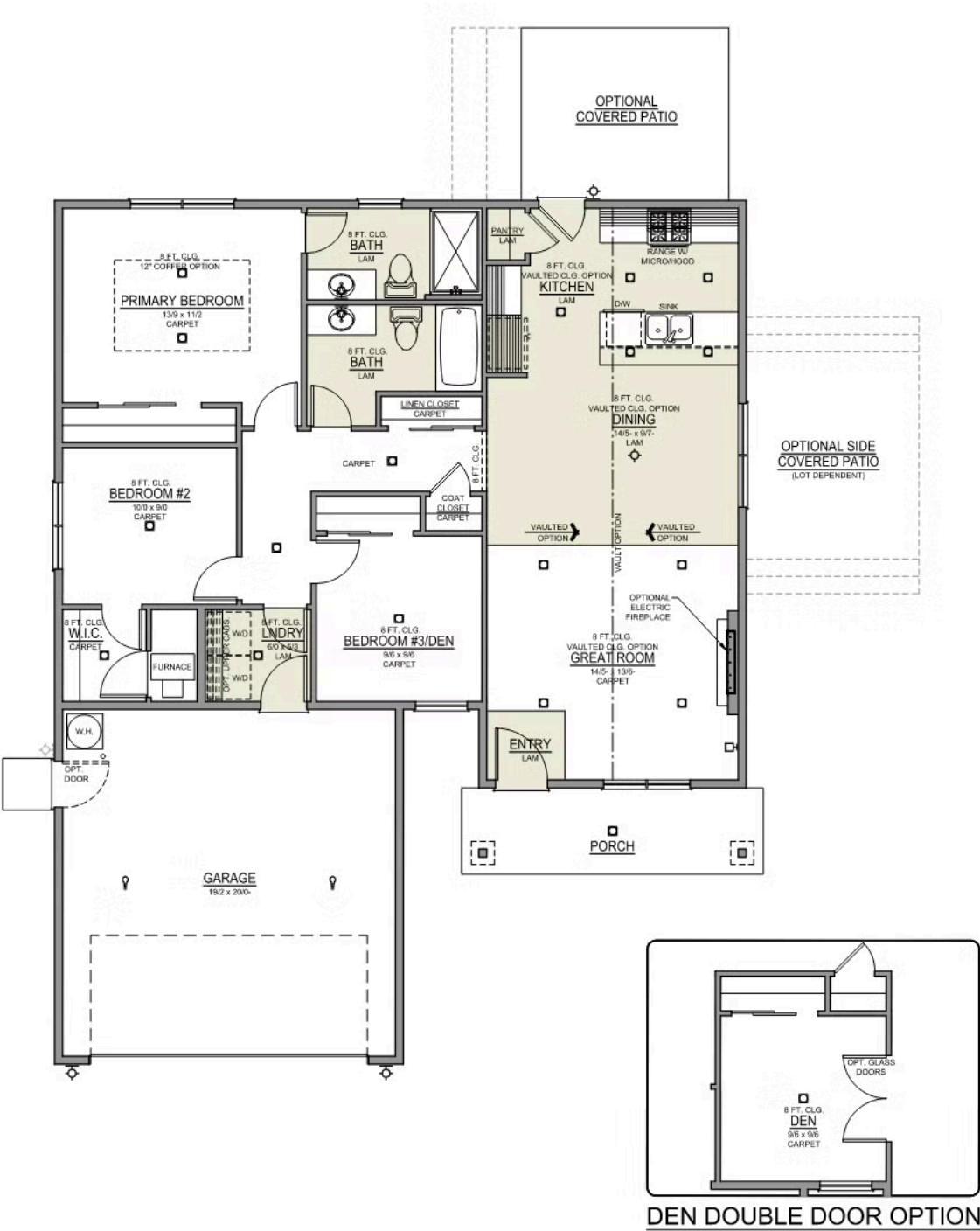
2 Bathrooms

1,249 Sq. Ft.

2 Car Garage

339,997

Camellia 2-Car  
1,249 Sq. Ft.  
3 Bedroom, 2 Bath




# Upland Meadows

## OPTIONS

Camellia Premier  
LOT 24

876 E Kinsley Ave Hermiston, OR 97838

 3 Bedrooms  2 Bathrooms  1,249 Sq. Ft.  2 Car Garage  339,997

- Interior Color Package: "Mountain Vogue". Comes with Stained Cabinets.
- Interior Walls/Trim: Walls - "Pure White", Trim - "Drift of Mist"
- Exterior Color Package: Rustic Woods
- Light Fixtures: Acadia
- Doors: Standard Hardware. Cove knobs / Amador front door handle.
- Bathroom: Upgraded finishes in BLACK. Soaker Tub NOT included. All bathrooms. (Plumbing Fixtures, bath accessories and shower door hardware)
- Bathroom: Every Glass Shower Enclosure - Color Choice - "Clear Glass".
- Electrical: Tech Package Pre Wire - Includes Panel, 110 outlet, 1 Dual Wall Plate (Coax & Ethernet) in Great Room
- Ceilings: (Premier Series Only) Vault in Great Room and Coffered Ceiling in Primary Bedroom.
- Kitchen: Base House (Premier/Origin). Wall Range, 30" STAINED Cabinets (All Kitchen & Bath Cabs Stained).
- Cabinets: Specify Color of Knobs and Pulls
- Counters: Quartz Counters and Backsplash (6") in Kitchen
- Counters: Quartz Counters and Backsplash in Guest Bath
- Counters: Quartz Counters and Backsplash in Primary Bath
- Flooring: Great Room - Wood Laminate (Casita Court)
- Flooring: Hallway Down & Linen Closets - Wood Laminate (Casita Court)
- Garage: Garage Door Opener
- Garage: Garage Door Opener Wireless Keypad
- HVAC: System - Air Conditioner (Includes PreWire).  
\*Not available for Duets.
- Fireplace: Electric Fireplace - Drywall Only w/ Mantle

MonteVista  
HOMES

541-403-5150

*In a continual effort to improve our product, MonteVista Homes reserves the right to change product design, features, materials, floor plans, specifications, prices and terms without prior notice. Square footage stated or implied are approximate. Images may be representative of future home and show what's possible not what's included. Seller is a licensed real estate broker in the State of Oregon. CCB#203709*

