

Upland Meadows

Camellia
LOT 25

872 E Kinsley Ave Hermiston, OR 97838

🏠 3 Bedrooms

🚿 2 Bathrooms

🏠 1,249 Sq. Ft.

🚗 2 Car Garage

🏷️ 339,997

UNDER CONSTRUCTION



U - CRAFTSMAN ELEVATION



At 1,249 square feet, the Camellia is an approachable home that gives buyers thoughtful design and comfortable living without extra complexity. The open kitchen and great room invite easy daily connection, while three bedrooms offer room for rest, guests, or a small office. With its efficient layout and manageable footprint, the Camellia keeps everyday life feeling simple and purposeful. Designed with affordability and ease in mind, it's a solid foundation where routines come naturally and a sense of home takes shape around the moments that matter.

MonteVista
HOMES

541-403-5150

In a continual effort to improve our product, MonteVista Homes reserves the right to change product design, features, materials, floor plans, specifications, prices and terms without prior notice. Square footage stated or implied are approximate. Images may be representative of future home and show what's possible not what's included. Seller is a licensed real estate broker in the State of Oregon. CCB#203709



Upland Meadows

Camellia
LOT 25

872 E Kinsley Ave Hermiston, OR 97838

🛏 3 Bedrooms

🚿 2 Bathrooms

🏠 1,249 Sq. Ft.

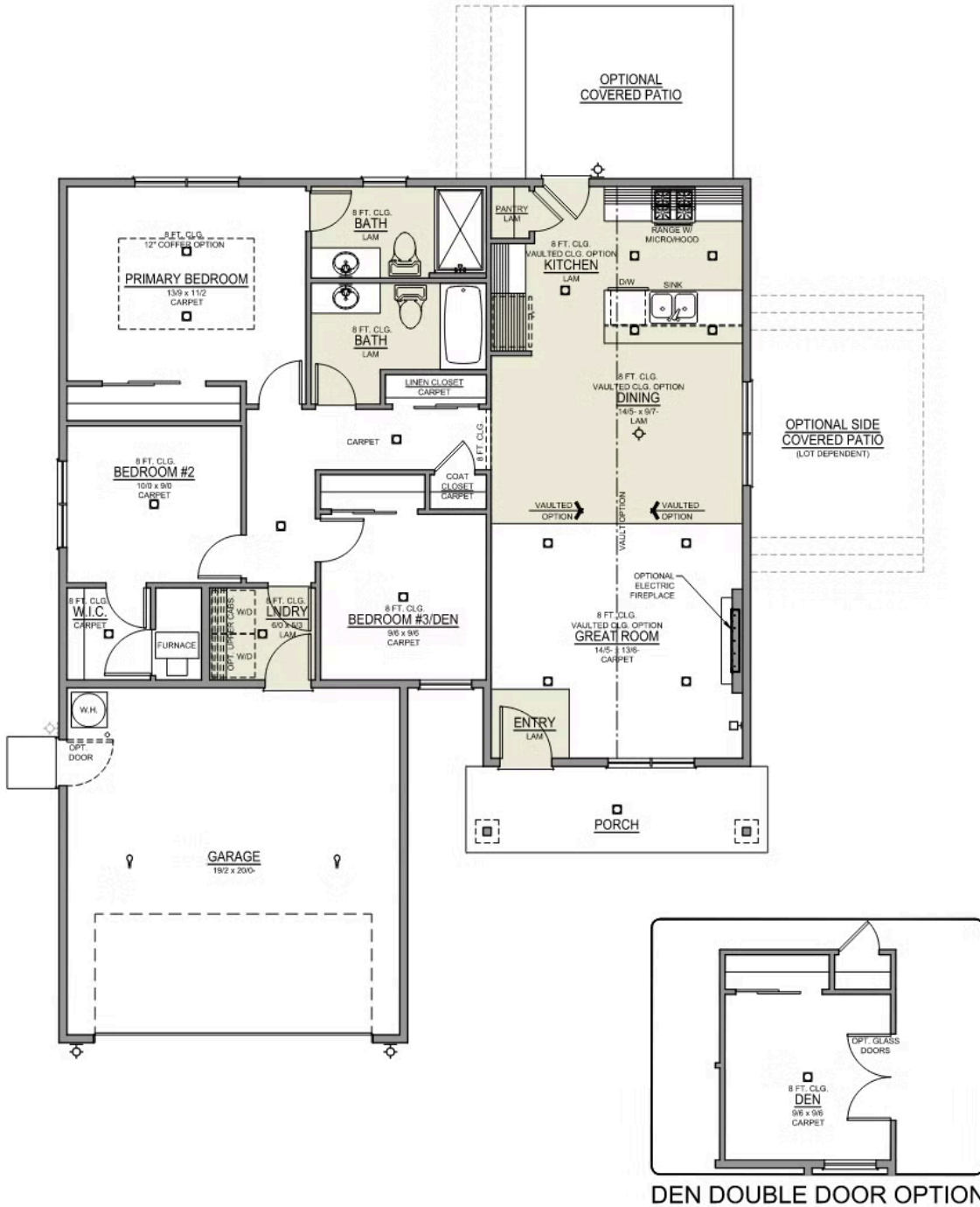
🚗 2 Car Garage

🏷 339,997

Camellia 2-Car

1,249 Sq. Ft.

3 Bedroom, 2 Bath



Upland Meadows

OPTIONS

Camellia
LOT 25

872 E Kinsley Ave Hermiston, OR 97838

 3 Bedrooms

 2 Bathrooms

 1,249 Sq. Ft.

 2 Car Garage

 339,997

- Interior Color Package: "Horizon Pine". Comes with Stained Cabinets.
- Interior Walls/Trim: Walls - "Drift of Mist", Trim - "Pure White"
- Exterior Color Package: Cascade Falls
- Light Fixtures: Acadia
- Doors: Standard Hardware. Cove knobs / Amador front door handle.
- Bathroom: Upgraded finishes in BLACK. Soaker Tub NOT included. All bathrooms. (Plumbing Fixtures, bath accessories and shower door hardware)
- Bathroom: Every Glass Shower Enclosure - Color Choice - "Clear Glass".
- Electrical: Tech Package Pre Wire - Includes Panel, 110 outlet, 1 Dual Wall Plate (Coax & Ethernet) in Great Room
- Ceilings: (Premier Series Only) Vault in Great Room and Coffered Ceiling in Primary Bedroom.
- Kitchen: Base House (Premier/Origin). Wall Range, 30" STAINED Cabinets (All Kitchen & Bath Cabs Stained).
- Cabinets: Specify Color of Knobs and Pulls
- Counters: Quartz Counters and Backsplash (6") in Kitchen
- Counters: Quartz Counters and Backsplash in Guest Bath(s)
- Counters: Quartz Counters and Backsplash in Primary Bath
- Flooring: Great Room - Wood Laminate (Casita Court)
- Flooring: Hallway Down & Linen Closets - Wood Laminate (Casita Court)
- Garage: Garage Door Opener
- Garage: Garage Door Opener Wireless Keypad
- HVAC: System - Air Conditioner (Includes PreWire).
*Not available for Duets.
- Fireplace: Electric Fireplace - Drywall Only w/ Mantle

MonteVista
HOMES

541-403-5150

In a continual effort to improve our product, MonteVista Homes reserves the right to change product design, features, materials, floor plans, specifications, prices and terms without prior notice. Square footage stated or implied are approximate. Images may be representative of future home and show what's possible not what's included. Seller is a licensed real estate broker in the State of Oregon. CCB#203709

