

# Upland Meadows

Charity Premier  
LOT 16

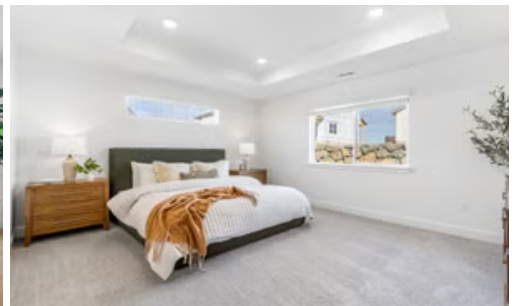
881 NE Laurel Springs Dr Hermiston, OR 97838

 3 Bedrooms  2 Bathrooms  1,892 Sq. Ft.  2 Car Garage  399,997

UNDER CONSTRUCTION



U - CRAFTSMAN



- Quartz Countertops throughout the home
- Free-Standing Soaking Tub
- Office, Study, or School Room

- Great Room with Fireplace
- Corner Kitchen Pantry
- Laundry/Mud room access from Garage

MonteVista  
HOMES

541-403-5150

*In a continual effort to improve our product, MonteVista Homes reserves the right to change product design, features, materials, floor plans, specifications, prices and terms without prior notice. Square footage stated or implied are approximate. Images may be representative of future home and show what's possible not what's included. Seller is a licensed real estate broker in the State of Oregon. CCB#203709*



# Upland Meadows

## OPTIONS

Charity Premier  
LOT 16

881 NE Laurel Springs Dr Hermiston, OR 97838

 3 Bedrooms  2 Bathrooms  1,892 Sq. Ft.  2 Car Garage  399,997

- Interior Color Package: "Haven Valley". Comes with Stained Cabinets.
- Interior Walls/Trim: Walls - "Pure White" , Trim - "Drift of Mist"
- Exterior Color Package: Deschutes Frost
- Light Fixtures: Acadia
- Doors: Hardware Standard - Cove knobs / Amador front door handle.
- Bathroom: Upgrade finishes to BLACK. Soaker Tub INCLUDED. All bathrooms. (Plumbing Fixtures, bath accessories and shower door hardware)
- Bathroom: Every Glass Shower Enclosure - Color Choice - "Clear Glass".
- Electrical: Tech Package Pre Wire - Includes Panel, 110 outlet, 1 Dual Wall Plate (Coax & Ethernet) in Great Room
- Ceilings: (Premier Series Only) Vault in Great Room and Coffered Ceiling in Primary Bedroom.
- Kitchen: Base House (Premier/Origin). Wall Range, 30" STAINED Cabinets (All Kitchen & Bath Cabs Stained).
- Cabinets: Specify Color of Knobs and Pulls
- Counters: Quartz Counters and Backsplash (6") in Kitchen
- Counters: Quartz Counters and Backsplash in Guest Bath
- Counters: Quartz Counters and Backsplash in Primary Bath
- Exterior Covered Patio: Rear - 12x10
- Electrical: Flush-Mount LEDs. Add 2 for 4 total + Dimmer switch. For Primary Bedroom.
- Fencing: White Vinyl, 6' tall. ( 50 ft Min Order)
- Fencing: 4' wide Walk Gate. White Vinyl, 6' tall.
- Flooring: Hallway Down - Wood Laminate (Casita Court)
- Garage: Garage Door Opener
- Garage: Garage Door Opener Wireless Keypad
- HVAC: System - Air Conditioner (Includes PreWire).  
\*Not available for Duets.
- Fireplace: Electric Fireplace - Drywall Only w/ Mantle
- Landscape: Backyard Landscaping. Up to a 60-ft wide lot
- Bathroom: Freestanding Soaker Tub

MonteVista  
HOMES

541-403-5150

*In a continual effort to improve our product, MonteVista Homes reserves the right to change product design, features, materials, floor plans, specifications, prices and terms without prior notice. Square footage stated or implied are approximate. Images may be representative of future home and show what's possible not what's included. Seller is a licensed real estate broker in the State of Oregon. CCB#203709*

