

# Upland Meadows

Charity Premier  
LOT 20

902 E Kinsley Ave Hermiston, OR 97838

3 Bedrooms 2 Bathrooms 1,892 Sq. Ft. 2 Car Garage 414,900

UNDER CONSTRUCTION



T - TRADITIONAL



- Quartz Countertops throughout the home
- Free-Standing Soaking Tub
- Office, Study, or School Room
- Great Room with Electric Fireplace

- Corner Kitchen Pantry
- Laundry/Mud room access from Garage
- Smart Home Ready

MonteVista  
HOMES

541-403-5150

In a continual effort to improve our product, MonteVista Homes reserves the right to change product design, features, materials, floor plans, specifications, prices and terms without prior notice. Square footage stated or implied are approximate. Images may be representative of future home and show what's possible not what's included. Seller is a licensed real estate broker in the State of Oregon. CCB#203709



# Upland Meadows

Charity Premier  
LOT 20

902 E Kinsley Ave Hermiston, OR 97838

 3 Bedrooms

 2 Bathrooms

 1,892 Sq. Ft.

 2 Car Garage

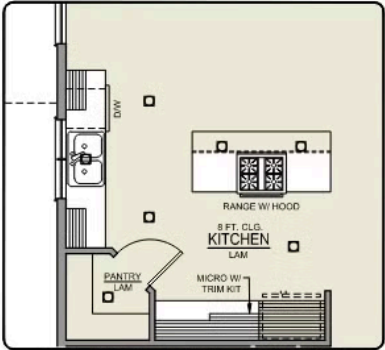
 414,900

Charity 2-Car

1,892 Sq. Ft.  
3 Bedroom, 2 Bath



PRIMARY BATH LINEN CLOSET OPTION

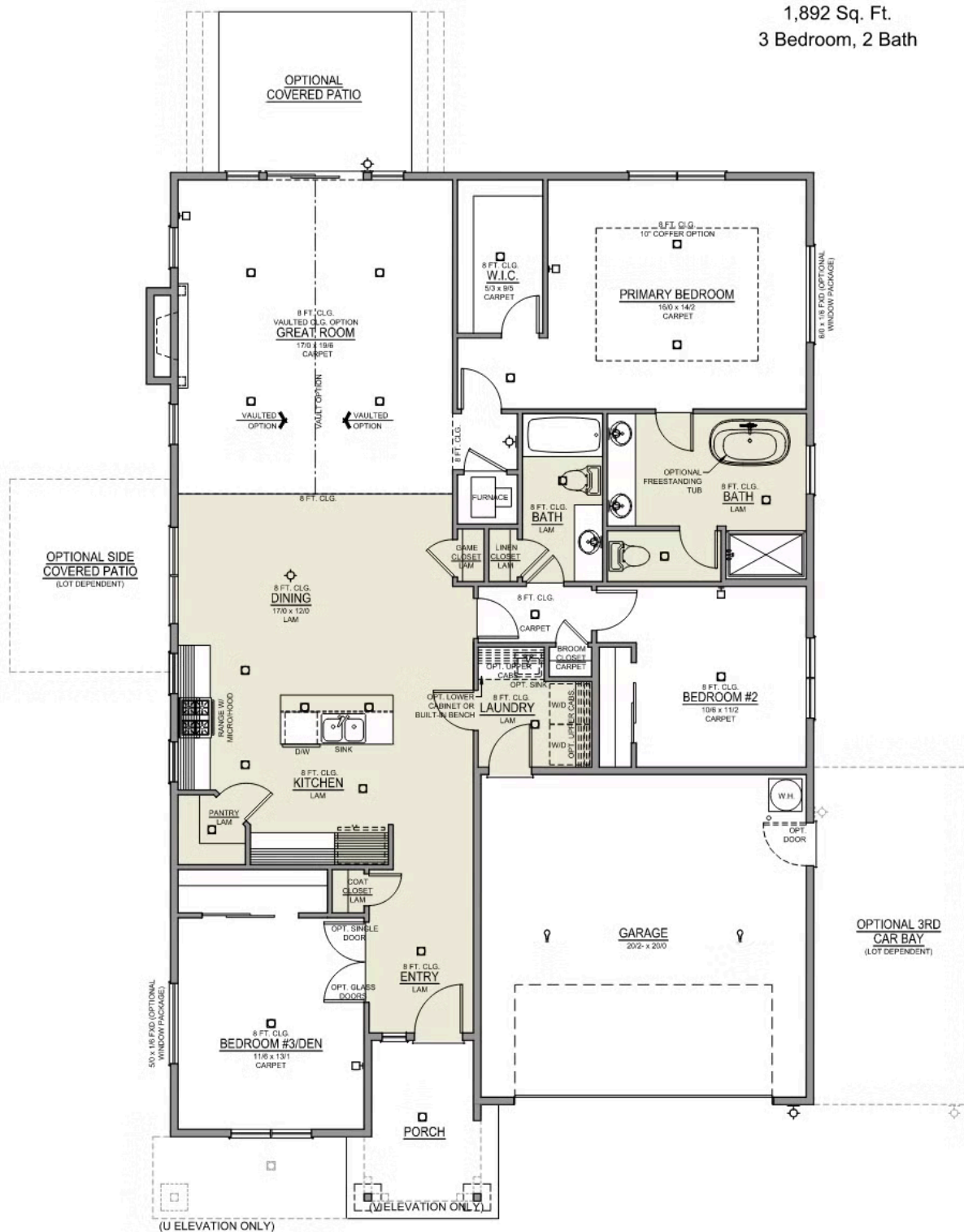


ISLAND HOOD OPTION

902 E Kinsley Ave Hermiston, OR 97838

414,900

3 Bedroom, 2 Bath



# Upland Meadows

## OPTIONS

Charity Premier  
LOT 20

902 E Kinsley Ave Hermiston, OR 97838

 3 Bedrooms  2 Bathrooms  1,892 Sq. Ft.  2 Car Garage  414,900

- Interior Color Package: "Granite Shoreline". Comes with Painted Cabinets.
- Exterior Color Package: Deschutes Frost
- Light Fixtures: Acadia
- Doors: Hardware Standard - Cove knobs / Amador front door handle.
- Bathroom: Upgrade finishes to BLACK. Soaker Tub INCLUDED. All bathrooms. (Plumbing Fixtures, bath accessories and shower door hardware)
- Bathroom: Shower Enclosure(s) Glass Color Choice
- Corner Lot Exterior Package: Includes Window trim on Corner Side, Flatwork and Corner Lot Landscaping up to the rear of the house.
- Electrical: Tech Package Pre Wire - Includes Panel, 110 outlet, 1 Dual Wall Plate (Coax & Ethernet) in Great Room
- Windows Package: Optional Windows
- Ceilings: (Premier Series Only) Vault in Great Room and Coffered Ceiling in Primary Bedroom.
- Kitchen: Island Range with Hood. 36" Cabinets. PAINTED Kitchen & Bathroom Cabinets. Sliding Window over the sink.
- Cabinets: Specify Color of Knobs and Pulls
- Counters: Quartz Counters and Backsplash in Kitchen
- Counters: Quartz Counters and Backsplash in Guest Bath
- Counters: Quartz Counters and Backsplash in Primary Bath
- Exterior Covered Patio: Rear - 12x10
- Doors: Kitchen Pantry Door w/ Glass (Frosted w/ Border).
- Flooring: Great Room - Wood Laminate (Casita Court)
- Flooring: Hallway Down - Wood Laminate (Casita Court)
- Garage: Garage Door Opener
- Garage: Garage Door Opener Wireless Keypad
- HVAC: System - Air Conditioner (Includes PreWire).  
\*Not available for Duets.
- Fireplace: Electric Fireplace - Drywall Only w/ Mantle
- Fireplace: Add Shiplap to Electric Fireplace
- Kitchen: Farm Sink - Stainless Steel Single Bowl  
\*\*REQUIRES QUARTZ COUNTERTOPS\*\*
- Bathroom: Freestanding Soaker Tub

MonteVista  
HOMES

541-403-5150

*In a continual effort to improve our product, MonteVista Homes reserves the right to change product design, features, materials, floor plans, specifications, prices and terms without prior notice. Square footage stated or implied are approximate. Images may be representative of future home and show what's possible not what's included. Seller is a licensed real estate broker in the State of Oregon. CCB#203709*

