

Upland Meadows

Charity
LOT 28

850 E Kinsley Ave Hermiston, OR 97838

3 Bedrooms

2 Bathrooms

1,892 Sq. Ft.

2 Car Garage

410,000

UNDER CONSTRUCTION



The Charity stands out for how it uses its 1,892 square feet to balance openness with real-life versatility. A front bedroom sits just off the entry, making it a perfect home office, schoolroom, or dedicated play space separate from the main living areas. The second bedroom connects to the hallway bath, creating a comfortable second en suite for guests. At the heart of the home, the open kitchen, dining, and great room foster natural gatherings throughout the day. With its thoughtful layout and flexible spaces, the Charity supports a range of everyday moments with ease.

MonteVista
HOMES

541-403-5150

In a continual effort to improve our product, MonteVista Homes reserves the right to change product design, features, materials, floor plans, specifications, prices and terms without prior notice. Square footage stated or implied are approximate. Images may be representative of future home and show what's possible not what's included. Seller is a licensed real estate broker in the State of Oregon. CCB#203709



Upland Meadows

Charity
LOT 28

850 E Kinsley Ave Hermiston, OR 97838

🏠 3 Bedrooms

🚿 2 Bathrooms

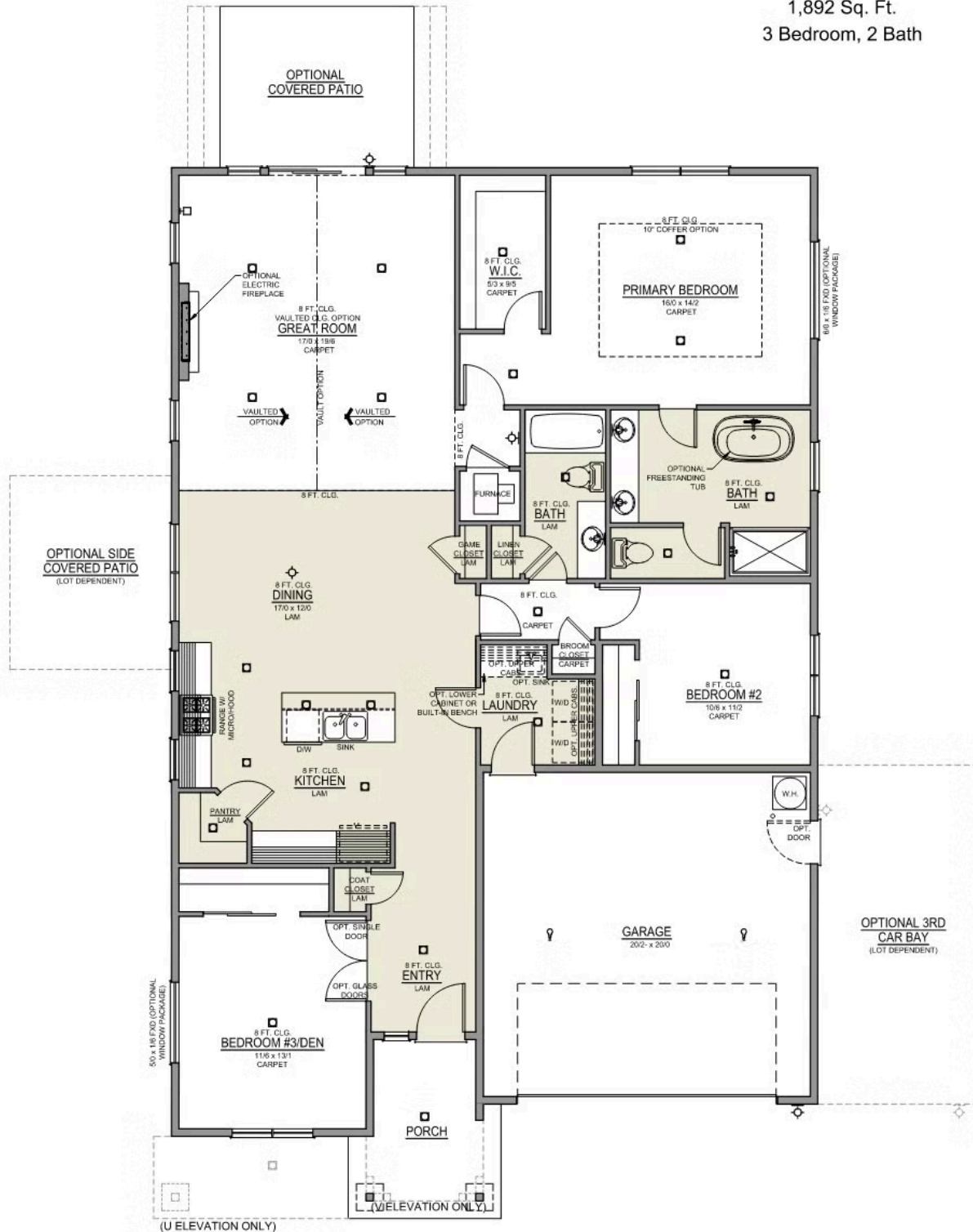
🏠 1,892 Sq. Ft.

🚗 2 Car Garage

🏠 410,000

Charity 2-Car

1,892 Sq. Ft.
3 Bedroom, 2 Bath



Upland Meadows

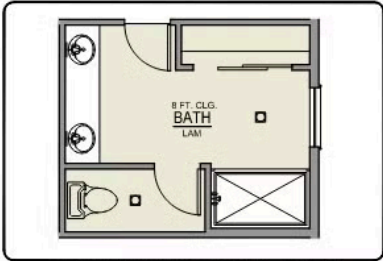
Charity
LOT 28

850 E Kinsley Ave Hermiston, OR 97838

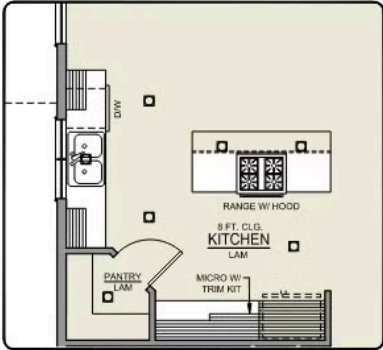
3 Bedrooms 2 Bathrooms 1,892 Sq. Ft. 2 Car Garage 410,000

Charity 2-Car

1,892 Sq. Ft.
3 Bedroom, 2 Bath



PRIMARY BATH LINEN
CLOSET OPTION



ISLAND HOOD OPTION

Upland Meadows

OPTIONS

Charity
LOT 28

850 E Kinsley Ave Hermiston, OR 97838

 3 Bedrooms

 2 Bathrooms

 1,892 Sq. Ft.

 2 Car Garage

 410,000

- Interior Color Package: "Horizon Pine". Includes Stained Cabinets.
- Interior Walls/Trim: Walls - "Snowbound" , Trim - "Pure White"
- Exterior Color Package: Deschutes Frost
- Light Fixtures: Acadia
- Doors: Standard Hardware. Cove knobs / Amador front door handle.
- Bathroom: Upgrade finishes to BLACK. Soaker Tub INCLUDED. All bathrooms. (Plumbing Fixtures, bath accessories and shower door hardware)
- Bathroom: Every Glass Shower Enclosure - Color Choice - "Clear Glass".
- Electrical: Tech Package Pre Wire - Includes Panel, 110 outlet, 1 Dual Wall Plate (Coax & Ethernet) in Great Room
- Ceilings: (Premier Series Only) Vault in Great Room and Coffered Ceiling in Primary Bedroom.
- Kitchen: Island Range/Hood. 30" STAINED Cabinets. All Kitchen & Bath Cabs Stained. Sliding Window over the sink. (Premier/Origin Series)
- Cabinets: Specify Color of Knobs and Pulls
- Counters: Quartz Counters and Backsplash (6") in Kitchen
- Counters: Quartz Counters and Backsplash in Guest Bath(s)
- Counters: Quartz Counters and Backsplash in Primary Bath
- Exterior Covered Patio: Rear - 12x10
- Electrical: Surface Mount LEDs. Add 2 for 4 total + Dimmer switch. For Primary Bedroom (N/A for Florence).
- Flooring: Great Room - Wood Laminate (Casita Court)
- Flooring: Hallway Down & Linen Closets - Wood Laminate (Casita Court)
- Garage: Garage Door Opener
- Garage: Garage Door Opener Wireless Keypad
- HVAC: System - Air Conditioner (Includes PreWire). *Not available for Duets.
- Fireplace: Electric Fireplace - Drywall Only w/ Mantle
- Landscape: Backyard Landscaping. Up to a 60-ft wide lot
- Kitchen: Farm Sink - Stainless Steel Single Bowl **REQUIRES QUARTZ COUNTERTOPS**
- Kitchen or Laundry: Upgrade Faucet to Moen Arbor. SPECIFY Location(s) and Color. (Kitchen or Laundry. Black or Spot Resistant Stainless)
- Bathroom: Freestanding Soaker Tub

MonteVista
HOMES

541-403-5150

In a continual effort to improve our product, MonteVista Homes reserves the right to change product design, features, materials, floor plans, specifications, prices and terms without prior notice. Square footage stated or implied are approximate. Images may be representative of future home and show what's possible not what's included. Seller is a licensed real estate broker in the State of Oregon. CCB#203709

