

Upland Meadows

Charlotte Premier
LOT 14

873 NE Laurel Springs Dr Hermiston, OR 97838

 4 Bedrooms  2 Bathrooms  1,701 Sq. Ft.  2 Car Garage  379,997

UNDER CONSTRUCTION



T - TRADITIONAL 2 CAR



- Kitchen Island with Sink
- Quartz Countertops throughout Home
- Open Great Room with Fireplace
- Kitchen Pantry
- Stainless Steel Kitchen Appliances
- Laundry Room

MonteVista
HOMES

541-403-5150

In a continual effort to improve our product, MonteVista Homes reserves the right to change product design, features, materials, floor plans, specifications, prices and terms without prior notice. Square footage stated or implied are approximate. Images may be representative of future home and show what's possible not what's included. Seller is a licensed real estate broker in the State of Oregon. CCB#203709



Upland Meadows

Charlotte Premier
LOT 14

873 NE Laurel Springs Dr Hermiston, OR 97838

4 Bedrooms

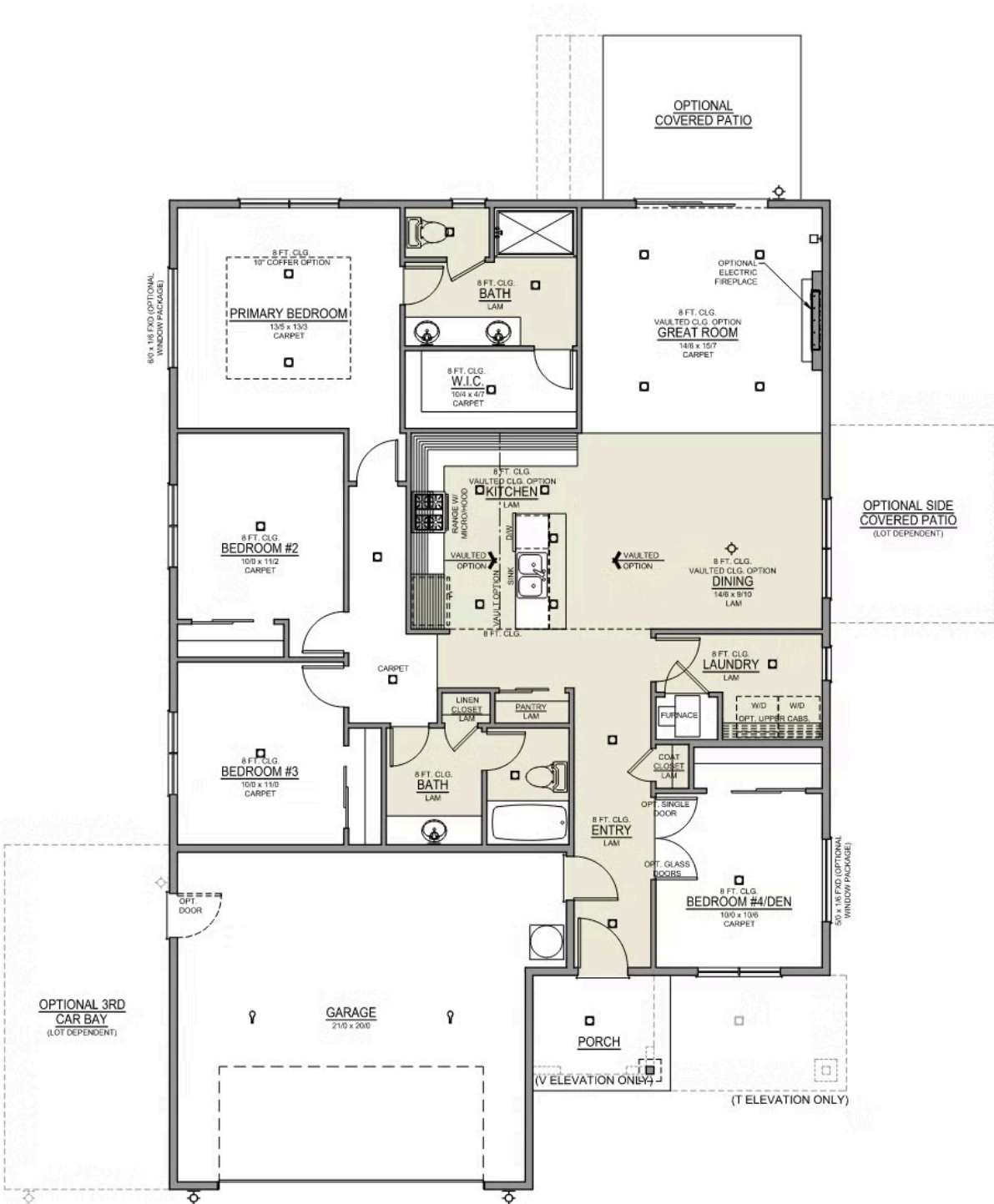
2 Bathrooms

1,701 Sq. Ft.

2 Car Garage

379,997

Charlotte 2-Car
1,701 Sq. Ft.
4 Bedroom, 2 Bath







Upland Meadows

OPTIONS

Charlotte Premier
LOT 14

873 NE Laurel Springs Dr Hermiston, OR 97838

 4 Bedrooms  2 Bathrooms  1,701 Sq. Ft.  2 Car Garage  379,997

- Interior Color Package: "Haven Valley". Comes with Stained Cabinets.
- Interior Walls/Trim: Walls - "Pure White" , Trim - "Drift of Mist"
- Exterior Color Package: Twilight Ridge
- Light Fixtures: Acadia
- Doors: Standard Hardware. Cove knobs / Amador front door handle.
- Bathroom: Upgraded finishes in BLACK. Soaker Tub NOT included. All bathrooms. (Plumbing Fixtures, bath accessories and shower door hardware)
- Bathroom: Every Glass Shower Enclosure - Color Choice - "Obscure Glass".
- Electrical: Tech Package Pre Wire - Includes Panel, 110 outlet, 1 Dual Wall Plate (Coax & Ethernet) in Great Room
- Ceilings: (Premier Series Only) Vault in Great Room and Coffered Ceiling in Primary Bedroom.
- Kitchen: Base House (Premier/Origin). Wall Range, 30" STAINED Cabinets (All Kitchen & Bath Cabs Stained).
- Cabinets: Specify Color of Knobs and Pulls
- Counters: Quartz Counters and Backsplash (6") in Kitchen
- Counters: Quartz Counters and Backsplash in Guest Bath
- Counters: Quartz Counters and Backsplash in Primary Bath
- Exterior Covered Patio: Rear - 12x10
- Fencing: White Vinyl, 6' tall. (50 ft Min Order)
- Fencing: 4' wide Walk Gate. White Vinyl, 6' tall.
- Flooring: Hallway Down - Wood Laminate (Casita Court)
- Garage: Garage Door Opener
- Garage: Garage Door Opener Wireless Keypad
- HVAC: System - Air Conditioner (Includes PreWire).
*Not available for Duets.
- Fireplace: Electric Fireplace - Drywall Only w/ Mantle
- Landscape: Backyard Landscaping. Up to a 60-ft wide lot

MonteVista
HOMES

541-403-5150

In a continual effort to improve our product, MonteVista Homes reserves the right to change product design, features, materials, floor plans, specifications, prices and terms without prior notice. Square footage stated or implied are approximate. Images may be representative of future home and show what's possible not what's included. Seller is a licensed real estate broker in the State of Oregon. CCB#203709

