

Premier Collection

Douglas Premier

Upland Meadows

 4 Bedrooms  3 Bathrooms  2,427 Sq. Ft.  2 Car Garage  From: \$429,997



U - CRAFTSMAN



V - FARMHOUSE



- 9 Foot Ceilings throughout Main Level
- Great Room with Electric Fireplace
- Kitchen Island with Sink
- Kitchen Pantry

- Upstairs Bonus Room / Loft
- Main Level Guest Suite / Den
- Quartz Countertops throughout Home
- Stainless Steel Appliances

MonteVista
HOMES

541-403-5150


In a continual effort to improve our product, MonteVista Homes reserves the right to change product design, features, materials, floor plans, specifications, prices and terms without prior notice. Square footage stated or implied are approximate. Images may be representative of future home and show what's possible not what's included. Seller is a licensed real estate broker in the State of Oregon. CCB#203709





Premier Collection


Douglas Premier


Upland Meadows

 4 Bedrooms

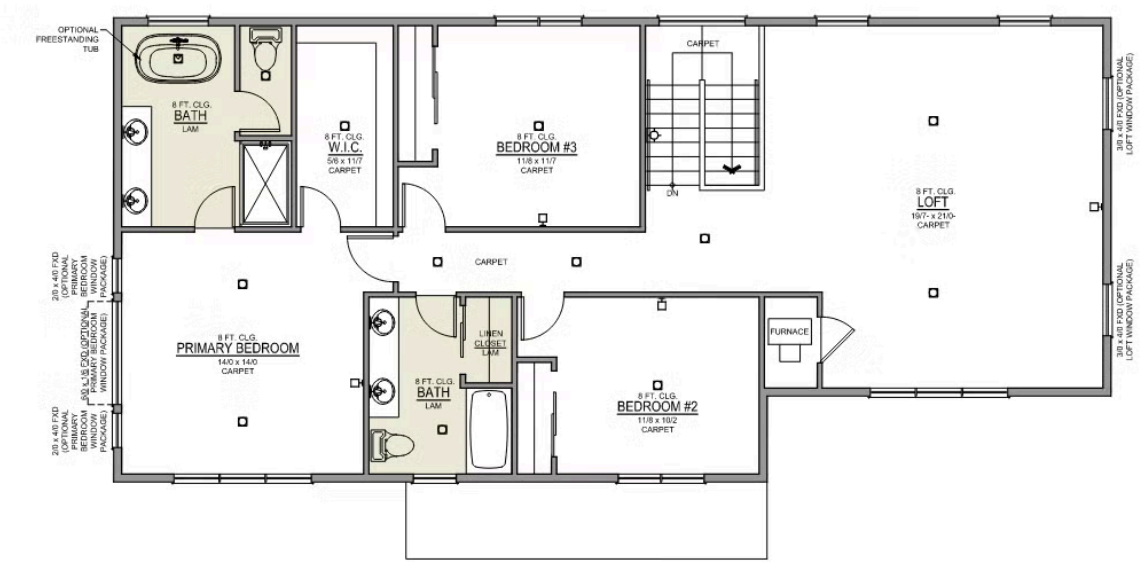
 3 Bathrooms

 2,427 Sq. Ft.

 2 Car Garage

 From: \$429,997

Douglas 2-Car
2,427 Sq. Ft.
4 Bedroom, 3 Bath




UPPER FLOOR





Premier Collection


Douglas Premier


Upland Meadows

 4 Bedrooms

 3 Bathrooms

 2,427 Sq. Ft.

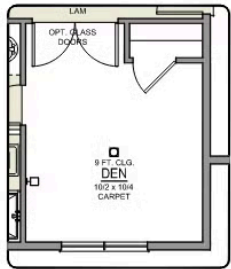
 2 Car Garage

 From: \$429,997

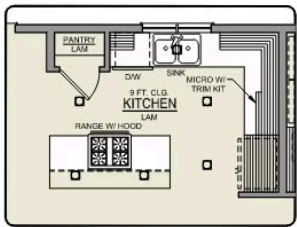
Douglas 2-Car
2,427 Sq. Ft.
4 Bedroom, 3 Bath



MAIN FLOOR



DEN OPTION



ISLAND HOOD OPTION