

Upland Meadows

Hope Premier
LOT 13

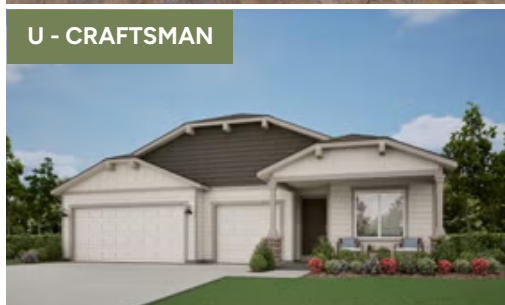
867 NE Laurel Springs Dr Hermiston, OR 97838

 4 Bedrooms  2 Bathrooms  1,906 Sq. Ft.  3 Car Garage  409,997

UNDER CONSTRUCTION



U - CRAFTSMAN



- Kitchen Island with Sink
- Kitchen Pantry
- Great Room with Fireplace

- Quartz Countertops throughout Home
- Stainless Steel Appliances

MonteVista
HOMES

541-403-5150

In a continual effort to improve our product, MonteVista Homes reserves the right to change product design, features, materials, floor plans, specifications, prices and terms without prior notice. Square footage stated or implied are approximate. Images may be representative of future home and show what's possible not what's included. Seller is a licensed real estate broker in the State of Oregon. CCB#203709



Upland Meadows

Hope Premier

LOT 13

867 NE Laurel Springs Dr Hermiston, OR 97838

4 Bedrooms

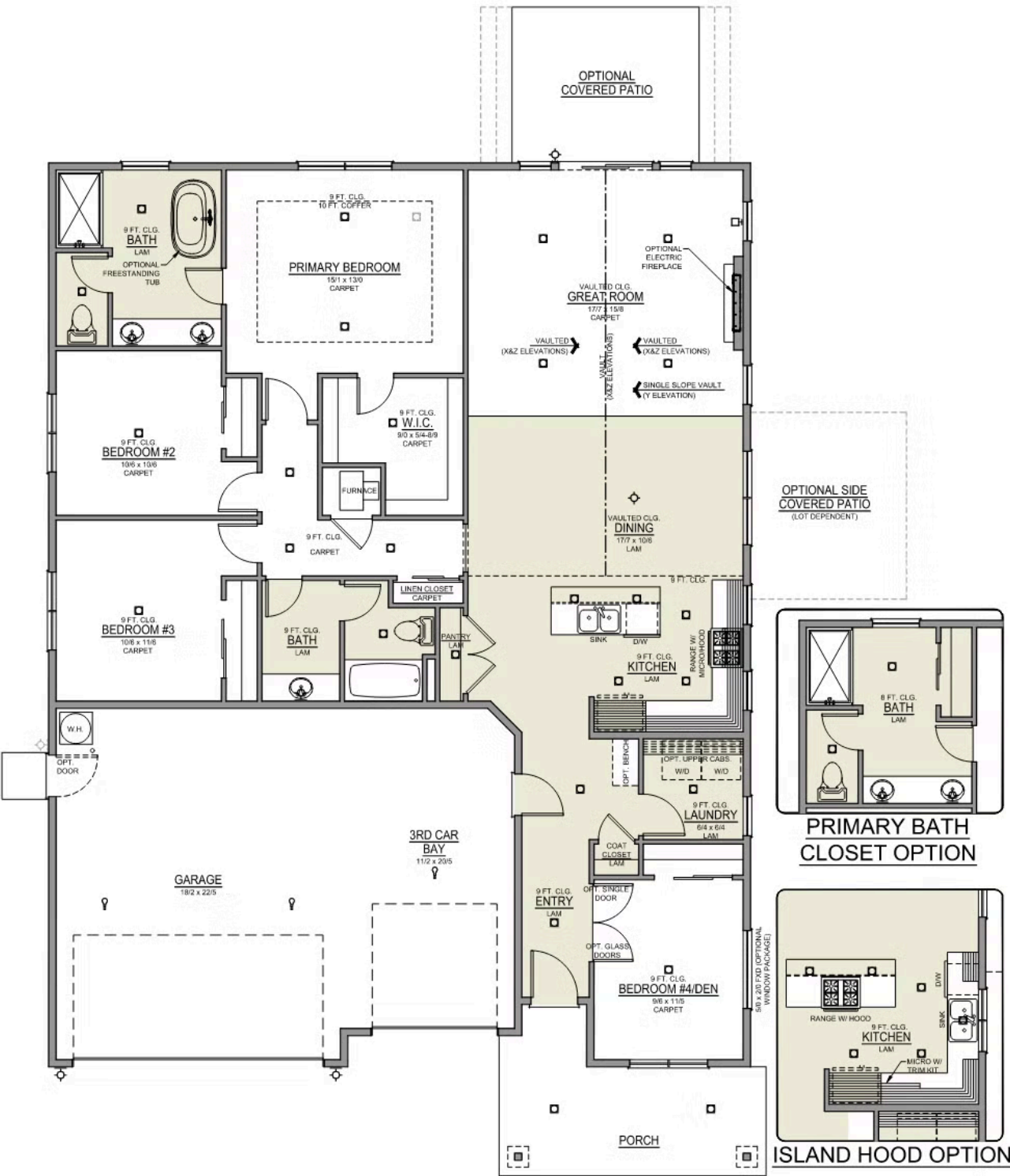
2 Bathrooms

1,906 Sq. Ft.

3 Car Garage

409,997

Hope 3-Car
1,906 Sq. Ft.
4 Bedroom, 2 Bath



Upland Meadows

OPTIONS

Hope Premier
LOT 13

867 NE Laurel Springs Dr Hermiston, OR 97838

 4 Bedrooms  2 Bathrooms  1,906 Sq. Ft.  3 Car Garage  409,997

- Interior Color Package: "Crystal Heights". Comes with Stained Cabinets.
- Interior Walls/Trim: Walls - "Snowbound" , Trim - "Pure White"
- Exterior Color Package: Spring Mist
- Light Fixtures: Acadia
- Doors: Standard Hardware. Cove knobs / Amador front door handle.
- Bathroom: Upgrade finishes to BLACK. Soaker Tub INCLUDED. All bathrooms. (Plumbing Fixtures, bath accessories and shower door hardware)
- Bathroom: Every Glass Shower Enclosure - Color Choice - "Clear Glass".
- Electrical: Tech Package Pre Wire - Includes Panel, 110 outlet, 1 Dual Wall Plate (Coax & Ethernet) in Great Room
- Ceilings: (Premier Series Only) Vault in Great Room and Coffered Ceiling in Primary Bedroom.
- Kitchen: Base House (Premier/Origin). Wall Range, 30" STAINED Cabinets (All Kitchen & Bath Cabs Stained).
- Cabinets: Specify Color of Knobs and Pulls
- Counters: Quartz Counters and Backsplash (6") in Kitchen
- Counters: Quartz Counters and Backsplash in Guest Bath
- Counters: Quartz Counters and Backsplash in Primary Bath
- Exterior Covered Patio: Rear - 12x10
- Fencing: White Vinyl, 6' tall. (50 ft Min Order)
- Fencing: 4' wide Walk Gate. White Vinyl, 6' tall.
- Flooring: Hallway Down - Wood Laminate (Casita Court)
- Garage: Garage Door Opener
- Garage: Garage Door Opener Wireless Keypad
- HVAC: System - Air Conditioner (Includes PreWire).
*Not available for Duets.
- Fireplace: Electric Fireplace - Drywall Only w/ Mantle
- Landscape: Backyard Landscaping. Up to a 60-ft wide lot
- Bathroom: Freestanding Soaker Tub

MonteVista
HOMES

541-403-5150

In a continual effort to improve our product, MonteVista Homes reserves the right to change product design, features, materials, floor plans, specifications, prices and terms without prior notice. Square footage stated or implied are approximate. Images may be representative of future home and show what's possible not what's included. Seller is a licensed real estate broker in the State of Oregon. CCB#203709

