

Upland Meadows

Hope Premier
LOT 26

868 E Kinsley Ave Hermiston, OR 97838

🏠 4 Bedrooms

🚿 2 Bathrooms

🏠 1,906 Sq. Ft.

🚗 3 Car Garage

🏷️ 420,000

UNDER CONSTRUCTION



T - TRADITIONAL



The Hope brings spacious single-level living together with thoughtful flexibility and a rare four-bedroom layout. A front bedroom doubles beautifully as a home office or schoolroom, set apart just enough to create focus and calm. At the center of the home, the open kitchen, dining, and great room offer warm, easy flow for everyday living. The three-car garage adds welcome room for storage, gear, or hobbies. With its generous footprint and intuitive design, the Hope supports those who want comfort, connection, and a home that lives simply and naturally.

MonteVista
HOMES

541-403-5150

In a continual effort to improve our product, MonteVista Homes reserves the right to change product design, features, materials, floor plans, specifications, prices and terms without prior notice. Square footage stated or implied are approximate. Images may be representative of future home and show what's possible not what's included. Seller is a licensed real estate broker in the State of Oregon. CCB#203709



Upland Meadows

Hope Premier
LOT 26

868 E Kinsley Ave Hermiston, OR 97838

🛏 4 Bedrooms

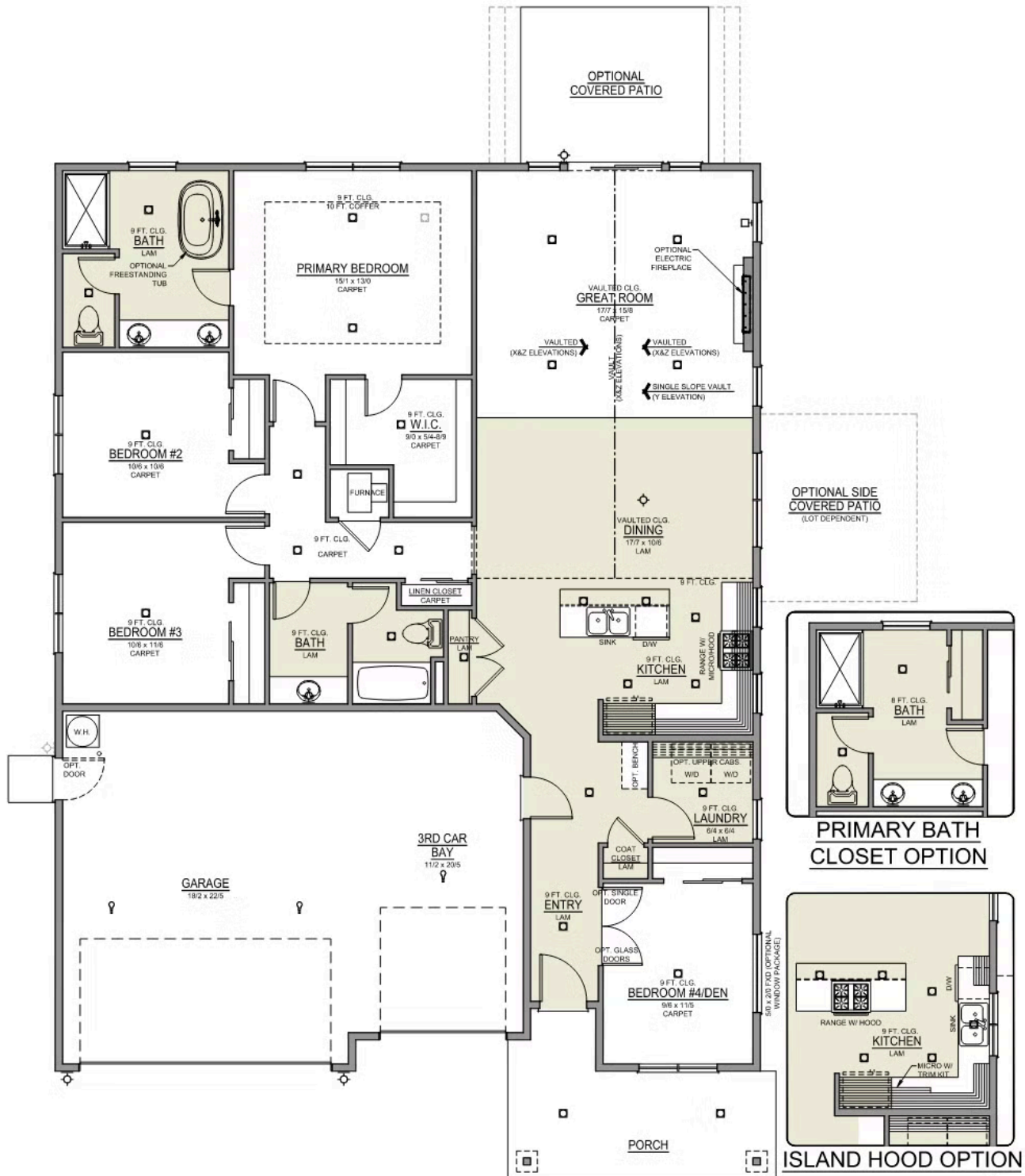
🚿 2 Bathrooms

🏠 1,906 Sq. Ft.

🚗 3 Car Garage

🏷 420,000

Hope 3-Car
1,906 Sq. Ft.
4 Bedroom, 2 Bath



Upland Meadows

OPTIONS

Hope Premier
LOT 26


868 E Kinsley Ave Hermiston, OR 97838

 4 Bedrooms

 2 Bathrooms

 1,906 Sq. Ft.

 3 Car Garage

 420,000

- Interior Color Package: "Haven Valley". Includes Stained Cabinets.
- Interior Walls/Trim: Walls - "Drift of Mist" , Trim - "Pure White"
- Exterior Color Package: Twilight Ridge
- Light Fixtures: Acadia
- Doors: Standard Hardware. Cove knobs / Amador front door handle.
- Bathroom: Upgrade finishes to BLACK. Soaker Tub INCLUDED. All bathrooms. (Plumbing Fixtures, bath accessories and shower door hardware)
- Bathroom: Every Glass Shower Enclosure - Color Choice - "Clear Glass".
- Electrical: Tech Package Pre Wire - Includes Panel, 110 outlet, 1 Dual Wall Plate (Coax & Ethernet) in Great Room
- Windows Package: Optional Windows
- Ceilings: (Premier Series Only) Vault in Great Room and Coffered Ceiling in Primary Bedroom.
- Kitchen: Island Range/Hood. 30" STAINED Cabinets. All Kitchen & Bath Cabs Stained. Sliding Window over the sink. (Premier/Origin Series)
- Cabinets: Specify Color of Knobs and Pulls
- Counters: Quartz Counters and Backsplash (6") in Kitchen
- Counters: Quartz Counters and Backsplash in Guest Bath(s)
- Counters: Quartz Counters and Backsplash in Primary Bath
- Exterior Covered Patio: Rear - 12x10
- Electrical: Surface Mount LEDs. Add 2 for 4 total + Dimmer switch. For Primary Bedroom (N/A for Florence).
- Flooring: Great Room - Wood Laminate (Casita Court)
- Flooring: Hallway Down & Linen Closets - Wood Laminate (Casita Court)
- Garage: Garage Door Opener
- Garage: Garage Door Opener Wireless Keypad
- HVAC: System - Air Conditioner (Includes PreWire). *Not available for Duets.
- Fireplace: Electric Fireplace - Drywall Only w/ Mantle
- Kitchen: Farm Sink - Stainless Steel Single Bowl **REQUIRES QUARTZ COUNTERTOPS**
- Kitchen or Laundry: Upgrade Faucet to Moen Arbor. SPECIFY Location(s) and Color. (Kitchen or Laundry. Black or Spot Resistant Stainless)
- Bathroom: Freestanding Soaker Tub

MonteVista
HOMES

541-403-5150

In a continual effort to improve our product, MonteVista Homes reserves the right to change product design, features, materials, floor plans, specifications, prices and terms without prior notice. Square footage stated or implied are approximate. Images may be representative of future home and show what's possible not what's included. Seller is a licensed real estate broker in the State of Oregon. CCB#203709

