

Upland Meadows

Hope Premier
LOT 1

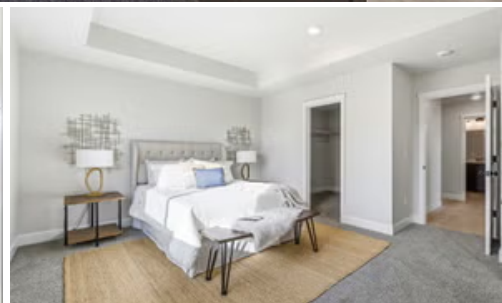
900 NE Laurel Springs Dr Hermiston, OR 97838

4 Bedrooms 2 Bathrooms 1,906 Sq. Ft. 3 Car Garage 419,997

MOVE-IN READY



T - TRADITIONAL



- Kitchen Island with Gas Range
- Kitchen Pantry
- Great Room with Fireplace

- Quartz Countertops throughout Home
- Stainless Steel Appliances

MonteVista
HOMES

541-403-5150

In a continual effort to improve our product, MonteVista Homes reserves the right to change product design, features, materials, floor plans, specifications, prices and terms without prior notice. Square footage stated or implied are approximate. Images may be representative of future home and show what's possible not what's included. Seller is a licensed real estate broker in the State of Oregon. CCB#203709



Upland Meadows

Hope Premier
LOT 1

900 NE Laurel Springs Dr Hermiston, OR 97838

4 Bedrooms

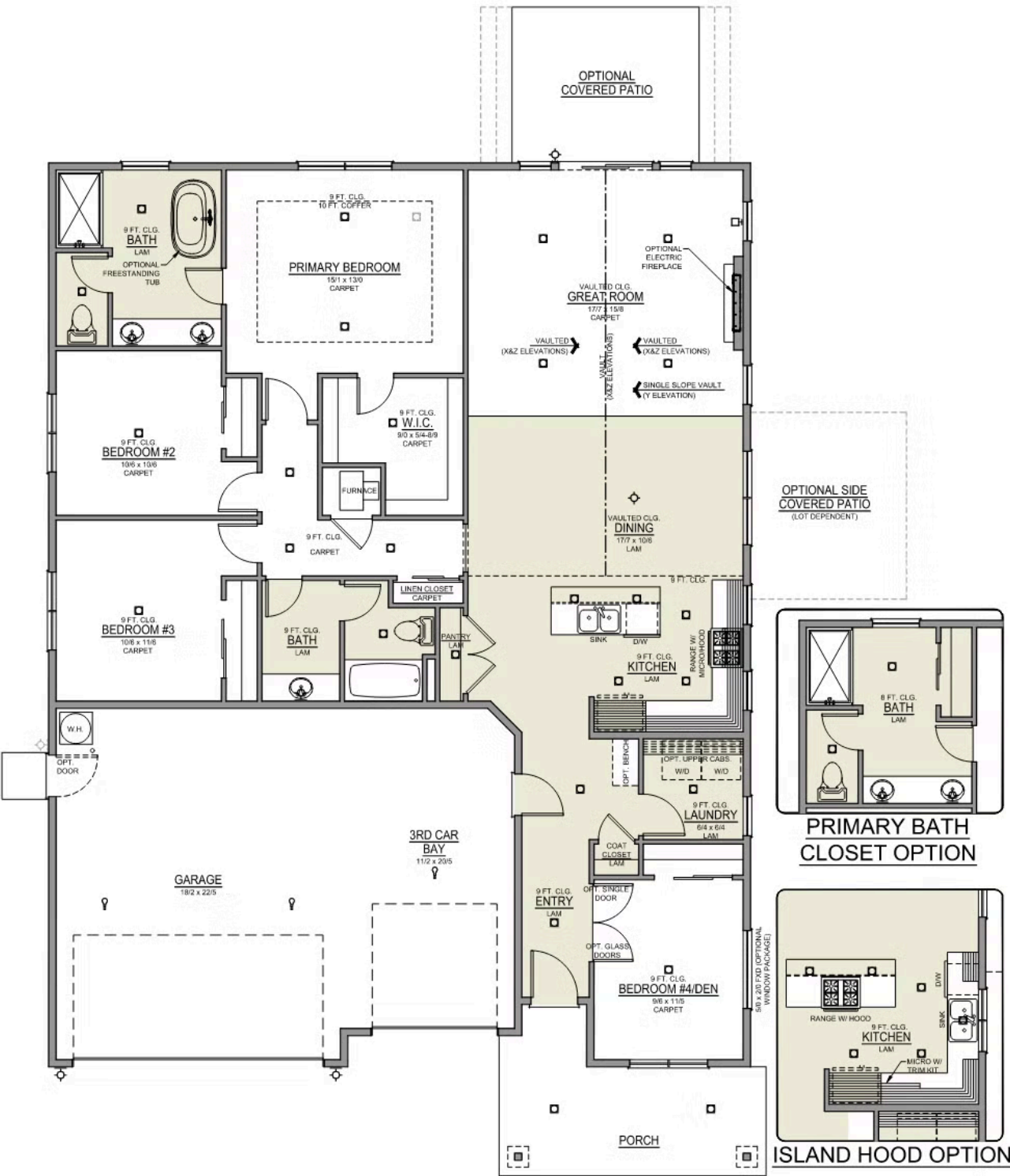
2 Bathrooms

1,906 Sq. Ft.

3 Car Garage

419,997

Hope 3-Car
1,906 Sq. Ft.
4 Bedroom, 2 Bath





Upland Meadows

OPTIONS

Hope Premier
LOT 1

900 NE Laurel Springs Dr Hermiston, OR 97838

 4 Bedrooms  2 Bathrooms  1,906 Sq. Ft.  3 Car Garage  419,997

- Interior Color Package: "Mountain Vogue".
- Exterior Color Package: Twilight Ridge
- Light Fixtures: Acadia
- Doors: Hardware Standard - Cove knobs / Amador front door handle.
- Bathroom: Upgrade finishes to BLACK. Soaker Tub INCLUDED. All bathrooms. (Plumbing Fixtures, bath accessories and shower door hardware)
- Bathroom: Shower Enclosure(s) Glass Color Choice
- Corner Lot Exterior Package: Includes Window trim on Corner Side, Flatwork and Corner Lot Landscaping up to the rear of the house.
- Appliances Package: Washer & Dryer (Electric)
- Electrical: Tech Package Pre Wire - Includes Panel, 110 outlet, 1 Dual Wall Plate (Coax & Ethernet) in Great Room
- Windows Package: Optional Windows
- Ceilings: (Premier Series Only) Vault in Great Room and Coffered Ceiling in Primary Bedroom.
- Kitchen: Island Range and Hood. 30" Stained Cabinets. Sliding Window over the sink. (Premier & Origin Series Only)
- Appliances: Refrigerator - Side-By-Side, Water / Ice
- Cabinets: Specify Color of Knobs and Pulls
- Counters: Quartz Counters and Backsplash in Kitchen
- Counters: Quartz Counters and Backsplash in Guest Bath
- Counters: Quartz Counters and Backsplash in Primary Bath
- Exterior Covered Patio: Rear - 12x10
- Fencing: Cedar, Shadow Box, 6' tall. (50 ft Min. Order)
- Fencing: 4' wide Walk Gate. Cedar, Shadow Box, 6' tall,
- Flooring: Great Room - Wood Laminate (Casita Court)
- Flooring: Hallway Down - Wood Laminate (Casita Court)
- Garage: Garage Door Opener
- Garage: Garage Door Opener Wireless Keypad
- HVAC: System - Air Conditioner (Includes PreWire).
*Not available for Duets.
- Fireplace: Electric Fireplace - Drywall Only w/Mantle (Premier/Distinct Series)
- Fireplace: Add Shiplap to Electric Fireplace Drywall. Floor-to-Ceiling. (Premier & Distinct Series)
- Landscape: Backyard Landscaping. Up to a 60-ft wide lot
- Kitchen: Farm Sink - Stainless Steel Single Bowl
REQUIRES QUARTZ COUNTERTOPS
- Bathroom: Freestanding Soaker Tub
- Blinds: Faux Wood White. With optional windows

MonteVista
HOMES

541-403-5150

In a continual effort to improve our product, MonteVista Homes reserves the right to change product design, features, materials, floor plans, specifications, prices and terms without prior notice. Square footage stated or implied are approximate. Images may be representative of future home and show what's possible not what's included. Seller is a licensed real estate broker in the State of Oregon. CCB#203709

