

Upland Meadows

Jefferson
LOT 59

900 E Maple Brook Ave Hermiston, OR 97838

4 Bedrooms

2.5 Bathrooms

1,761 Sq. Ft.

2 Car Garage

397,000

UNDER CONSTRUCTION



The Jefferson is designed for buyers who want affordability and efficiency without giving up thoughtful living spaces. Its compact footprint opens to a bright main-level great room and kitchen that make everyday gathering feel natural. A main-floor bedroom adds flexibility for guests or a quiet work space. The nearby powder bath can be upgraded to a full bath for added privacy. Upstairs, three additional bedrooms create room for rest and routines, making this an approachable home shaped for real life.

MonteVista
HOMES

541-403-5150

In a continual effort to improve our product, MonteVista Homes reserves the right to change product design, features, materials, floor plans, specifications, prices and terms without prior notice. Square footage stated or implied are approximate. Images may be representative of future home and show what's possible not what's included. Seller is a licensed real estate broker in the State of Oregon. CCB#203709



Upland Meadows

Jefferson
LOT 59

900 E Maple Brook Ave Hermiston, OR 97838

🛏 4 Bedrooms

🚿 2.5 Bathrooms

🏠 1,761 Sq. Ft.

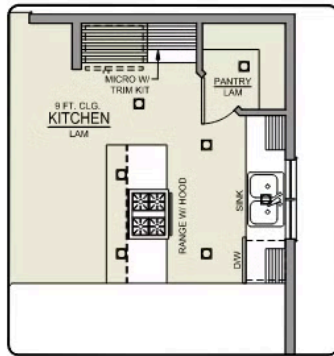
🚗 2 Car Garage

🏷 397,000

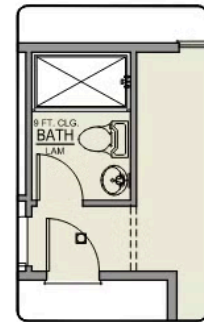
Jefferson 2-Car

1,761 Sq. Ft.

4 Bedroom, 2.5 Bath



ISLAND HOOD OPTION



BATHROOM OPTION



MAIN FLOOR

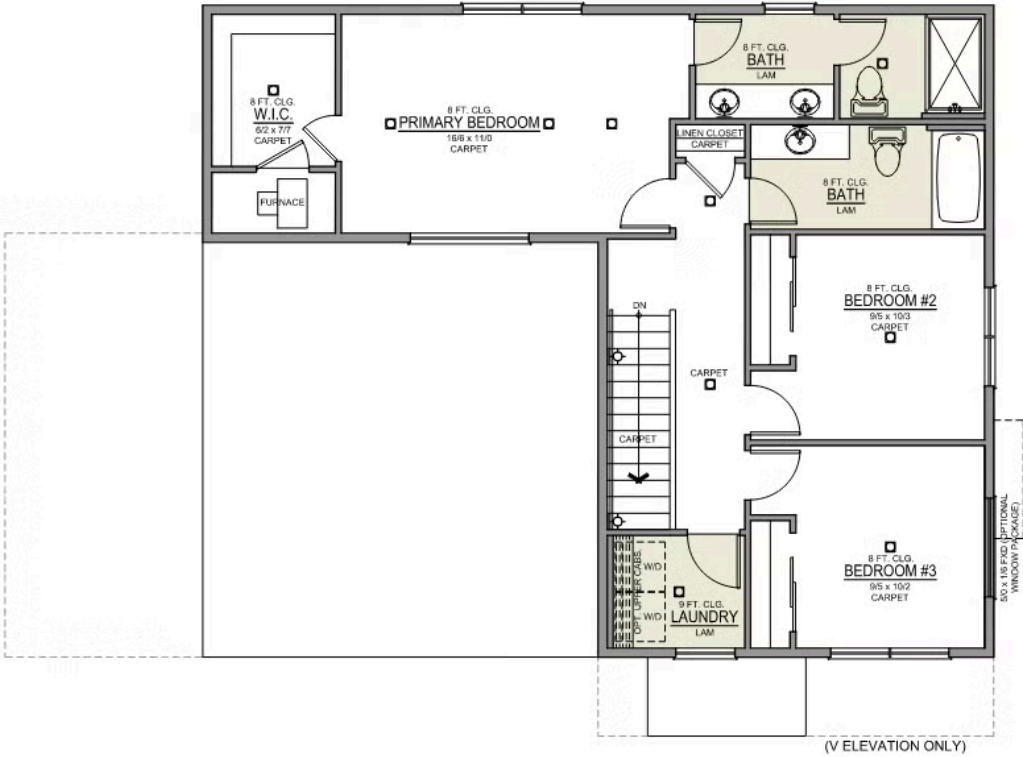
Upland Meadows

Jefferson
LOT 59

900 E Maple Brook Ave Hermiston, OR 97838

4 Bedrooms 2.5 Bathrooms 1,761 Sq. Ft. 2 Car Garage 397,000

Jefferson 2-Car
1,761 Sq. Ft.
4 Bedroom, 2.5 Bath








UPPER FLOOR

Upland Meadows

OPTIONS

Jefferson
LOT 59

900 E Maple Brook Ave Hermiston, OR 97838

 4 Bedrooms  2.5 Bathrooms  1,761 Sq. Ft.  2 Car Garage  397,000

- Interior Color Package: "Mountain Vogue". Includes Stained Cabinets.
- Interior Walls/Trim: Walls - "Pure White" , Trim - "Drift of Mist"
- Exterior Color Package: Alpine Trail
- Light Fixtures: Acadia
- Doors: Standard Hardware. Cove knobs / Amador front door handle.
- Bathroom: Upgraded finishes in BLACK. Soaker Tub NOT included. All bathrooms. (Plumbing Fixtures, bath accessories and shower door hardware)
- Bathroom: Every Glass Shower Enclosure - Color Choice - "Clear Glass".
- Corner Lot Exterior Package: Includes Window trim on Corner Side, Flatwork and Corner Lot Landscaping up to the rear of the house.
- Electrical: Tech Package Pre Wire - Includes Panel, 110 outlet, 1 Dual Wall Plate (Coax & Ethernet) in Great Room
- Windows Package: Optional Windows
- Kitchen: Wall Range. 36" PAINTED Cabinets. All Kitchen & Bath Cabs Painted. (Premier/Origin: Upgrade Kitchen to 36" Painted Cabs. Distinct: Upgrade Kitchen Cabs to Painted).
- Cabinets: Specify Color of Knobs and Pulls
- Counters: Quartz Counters and Backsplash (6") in Kitchen
- Counters: Quartz Counters and Backsplash in Guest Bath(s)
- Counters: Quartz Counters and Backsplash in Primary Bath
- Bathroom: JEFFERSON only - Add 5' Fiberglass Walk-In Shower to downstairs Powder Room. (Removes Window. Vanity Cabinet Option is not compatible).
- Exterior Covered Patio: Rear - 12x10
- Kitchen: Pendant Lights over Kitchen Island - In place of recessed LED
- Electrical: Surface Mount LEDs. Add 2 for 4 total + Dimmer switch. For Primary Bedroom (N/A for Florence).
- Flooring: Great Room - Wood Laminate (Casita Court)
- Flooring: Hallway Up & Linen Closets - Wood Laminate (Casita Court)
- Garage: Garage Door Opener
- Garage: Garage Door Opener Wireless Keypad
- HVAC: System - Air Conditioner (Includes PreWire). *Not available for Duets.
- Fireplace: Electric Fireplace - Drywall Only w/ Mantle
- Kitchen: Farm Sink - Stainless Steel Single Bowl **REQUIRES QUARTZ COUNTERTOPS**
- Kitchen or Laundry: Upgrade Faucet to Moen Arbor. SPECIFY Location(s) and Color. (Kitchen or Laundry. Black or Spot Resistant Stainless)

MonteVista
HOMES

541-403-5150

In a continual effort to improve our product, MonteVista Homes reserves the right to change product design, features, materials, floor plans, specifications, prices and terms without prior notice. Square footage stated or implied are approximate. Images may be representative of future home and show what's possible not what's included. Seller is a licensed real estate broker in the State of Oregon. CCB#203709

