

Upland Meadows

McKenzie Premier
LOT 9

848 NE Laurel Springs Dr Hermiston, OR 97838

3 Bedrooms

2 Bathrooms

1,488 Sq. Ft.

2 Car Garage

354,997

UNDER CONSTRUCTION



T - TRADITIONAL ELEVATION



The McKenzie is a compact, well-designed home that makes the most of its 1,488 square feet. A sizeable kitchen opens into the great room to create a connected, welcoming space for everyday living. Three bedrooms and two baths offer comfortable areas for rest, guests, or quiet routines, all within an easy-to-maintain footprint. With its practical layout and warm, approachable feel, the McKenzie supports the kind of simple, steady routines that make a home feel lived-in and loved.

MonteVista
HOMES

541-403-5150

In a continual effort to improve our product, MonteVista Homes reserves the right to change product design, features, materials, floor plans, specifications, prices and terms without prior notice. Square footage stated or implied are approximate. Images may be representative of future home and show what's possible not what's included. Seller is a licensed real estate broker in the State of Oregon. CCB#203709



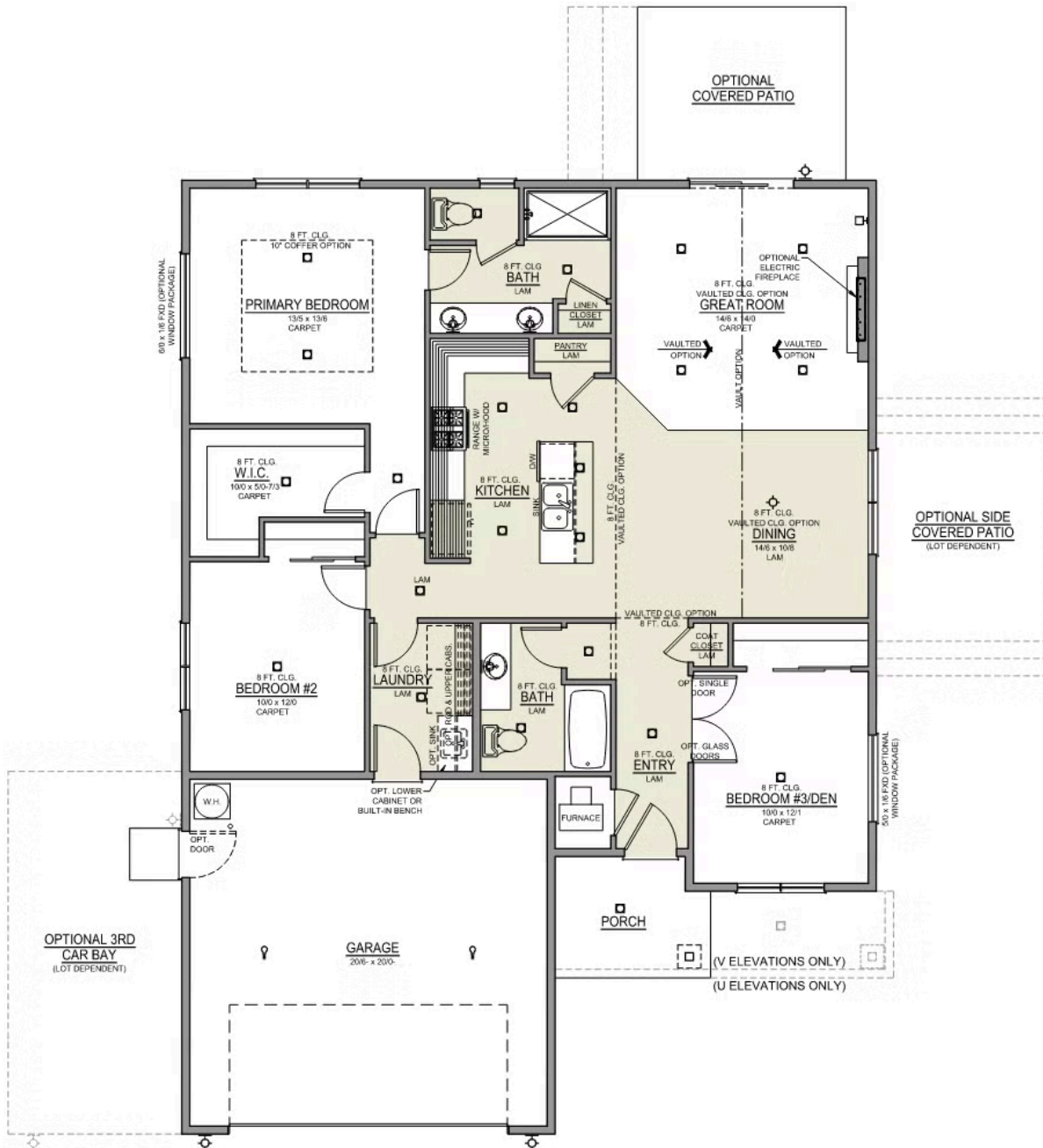
Upland Meadows

McKenzie Premier LOT 9

848 NE Laurel Springs Dr Hermiston, OR 97838

3 Bedrooms 2 Bathrooms 1,488 Sq. Ft. 2 Car Garage 354,997

McKenzie 2-Car
1,488 Sq. Ft.
3 Bedroom, 2 Bath



Upland Meadows

OPTIONS

McKenzie Premier
LOT 9


848 NE Laurel Springs Dr Hermiston, OR 97838

 3 Bedrooms

 2 Bathrooms

 1,488 Sq. Ft.

 2 Car Garage

 354,997

- Interior Color Package: "Horizon Pine". Comes with Stained Cabinets.
- Interior Walls/Trim: Walls - "Snowbound" , Trim - "Pure White"
- Exterior Color Package: Timberline Meadows
- Light Fixtures: Acadia
- Doors: Standard Hardware. Cove knobs / Amador front door handle.
- Bathroom: Upgraded finishes in BLACK. Soaker Tub NOT included. All bathrooms. (Plumbing Fixtures, bath accessories and shower door hardware)
- Bathroom: Every Glass Shower Enclosure - Color Choice - "Clear Glass".
- Electrical: Tech Package Pre Wire - Includes Panel, 110 outlet, 1 Dual Wall Plate (Coax & Ethernet) in Great Room
- Ceilings: (Premier Series Only) Vault in Great Room and Coffered Ceiling in Primary Bedroom.
- Kitchen: Wall Range. 30" PAINTED Cabinets. All Kitchen & Bath Cabs Painted. (Premier/Origin: Upgrade Kitchen Cabs to Painted. Distinct: Not Available)
- Cabinets: Specify Color of Knobs and Pulls
- Counters: Quartz Counters and Backsplash (6") in Kitchen
- Counters: Quartz Counters and Backsplash in Guest Bath(s)
- Counters: Quartz Counters and Backsplash in Primary Bath
- Exterior Covered Patio: Rear - 12x10
- Fencing: Cedar, Shadow Box, 6' tall. (50 ft Min. Order)
- Fencing: 12' wide Drivable Gate. Cedar, Shadow Box, 6' Tall.
- Flooring: Great Room - Wood Laminate (Casita Court)
- Garage: Garage Door Opener
- Garage: Garage Door Opener Wireless Keypad
- HVAC: System - Air Conditioner (Includes PreWire). *Not available for Duets.
- Fireplace: Electric Fireplace - Drywall Only w/ Mantle
- Landscape: Backyard Landscaping. Up to a 60-ft wide lot
- Kitchen: Farm Sink - Stainless Steel Single Bowl **REQUIRES QUARTZ COUNTERTOPS**
- Kitchen or Laundry: Upgrade Faucet to Moen Arbor. SPECIFY Location(s) and Color. (Kitchen or Laundry. Black or Spot Resistant Stainless)
- Corner Lot Exterior Package: Includes Window trim on Corner Side, Flatwork and Corner Lot Landscaping up to the rear of the house. **ESTIMATED**

MonteVista
HOMES

541-403-5150

In a continual effort to improve our product, MonteVista Homes reserves the right to change product design, features, materials, floor plans, specifications, prices and terms without prior notice. Square footage stated or implied are approximate. Images may be representative of future home and show what's possible not what's included. Seller is a licensed real estate broker in the State of Oregon. CCB#203709

