

# Upland Meadows

Metolius Premier  
LOT 39

903 E Kinsley Ave Hermiston, OR 97838

4 Bedrooms 3 Bathrooms 2,095 Sq. Ft. 3 Car Garage 439,698

UNDER CONSTRUCTION



T - TRADITIONAL, 2 CAR



- Upstairs Flex Space/ Loft
- Kitchen Island with Sink
- Corner Kitchen Pantry
- Main Level Guest Suite or Office
- Great Room with Fireplace

- Primary Suite with Walk-in Closet
- Quartz Countertops throughout Home
- Stainless Steel Appliances
- 9 Foot Ceilings throughout Main Level


MonteVista  
HOMES

541-403-5150

In a continual effort to improve our product, MonteVista Homes reserves the right to change product design, features, materials, floor plans, specifications, prices and terms without prior notice. Square footage stated or implied are approximate. Images may be representative of future home and show what's possible not what's included. Seller is a licensed real estate broker in the State of Oregon. CCB#203709



903 E Kinsley Ave Hermiston, OR 97838

 439,698

4 Bedroom, 3 Bath



# Upland Meadows

Metolius Premier

LOT 39

903 E Kinsley Ave Hermiston, OR 97838

4 Bedrooms

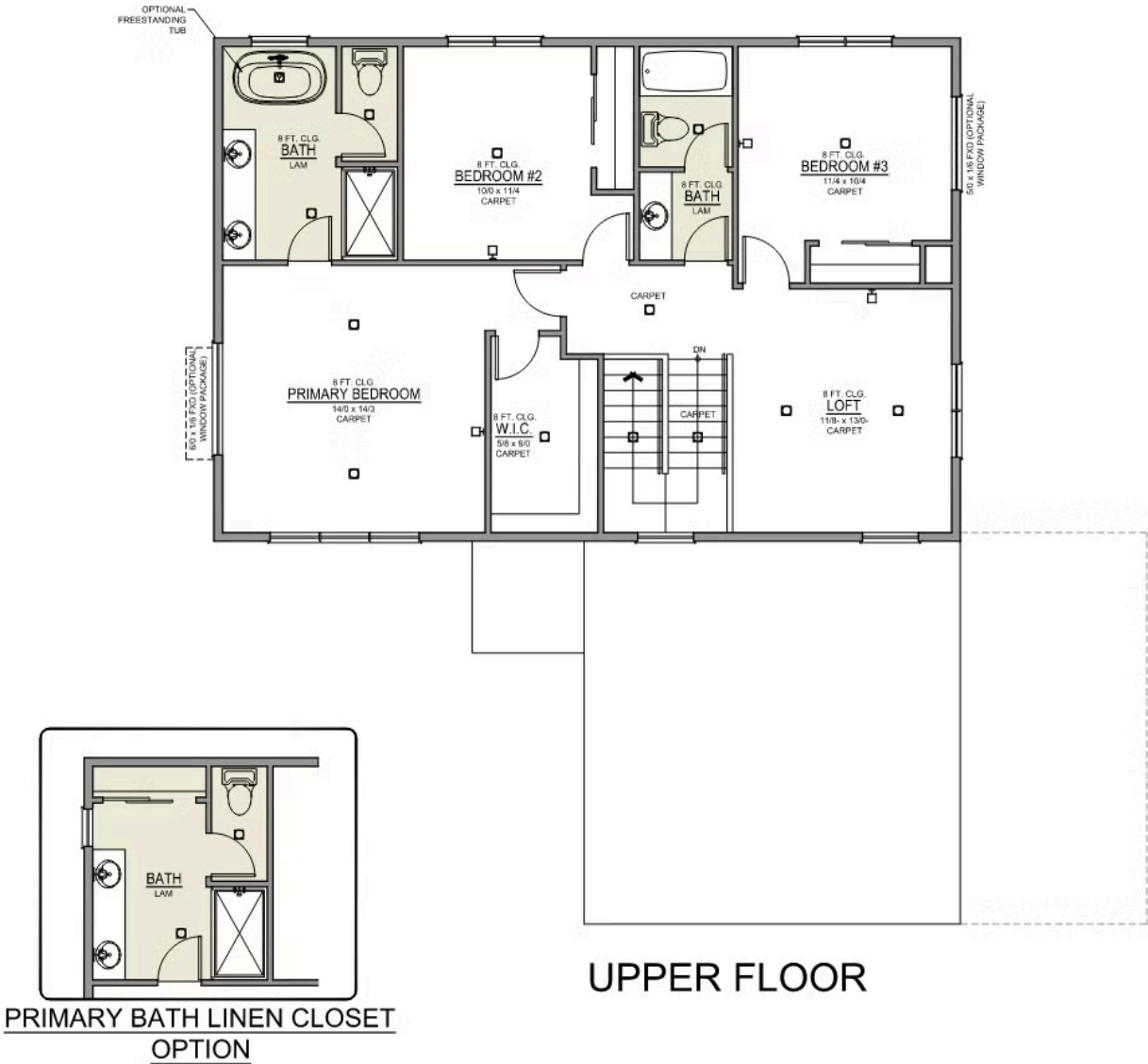
3 Bathrooms

2,095 Sq. Ft.

3 Car Garage

439,698

Metolius 2-Car  
2,095 Sq. Ft.  
4 Bedroom, 3 Bath




# Upland Meadows

## OPTIONS

Metolius Premier  
LOT 39

903 E Kinsley Ave Hermiston, OR 97838

 4 Bedrooms  3 Bathrooms  2,095 Sq. Ft.  3 Car Garage  439,698

- Interior Color Package: "Mountain Vogue". Comes with Stained Cabinets.
- Exterior Color Package: Timberline Meadows
- Light Fixtures: Acadia
- Doors: Hardware Standard - Cove knobs / Amador front door handle.
- Bathroom: Upgrade finishes to BLACK. Soaker Tub INCLUDED. All bathrooms. (Plumbing Fixtures, bath accessories and shower door hardware)
- Bathroom: Shower Enclosure(s) Glass Color Choice
- Corner Lot Exterior Package: Includes Window trim on Corner Side, Flatwork and Corner Lot Landscaping up to the rear of the house.
- Electrical: Tech Package Pre Wire - Includes Panel, 110 outlet, 1 Dual Wall Plate (Coax & Ethernet) in Great Room
- Windows Package: Optional Windows
- Kitchen: Island Range with Hood. 36" Stained Cabinets. Sliding Window over the sink.
- Cabinets: Specify Color of Knobs and Pulls
- Counters: Quartz Counters and Backsplash in Kitchen
- Counters: Quartz Counters and Backsplash in Guest Bath
- Counters: Quartz Counters and Backsplash in Primary Bath
- Exterior Covered Patio: Rear - 12x10
- Flooring: Great Room - Wood Laminate (Casita Court)
- Garage: Garage Door Opener
- Garage: Garage Door Opener Wireless Keypad
- HVAC: System - Air Conditioner (Includes PreWire).  
\*Not available for Duets.
- Fireplace: Electric Fireplace - Drywall Only w/ Mantle
- Fireplace: Add Shiplap to Electric Fireplace
- Kitchen: Farm Sink - Stainless Steel Single Bowl  
\*\*REQUIRES QUARTZ COUNTERTOPS\*\*
- Bathroom: Freestanding Soaker Tub

MonteVista  
HOMES

541-403-5150

*In a continual effort to improve our product, MonteVista Homes reserves the right to change product design, features, materials, floor plans, specifications, prices and terms without prior notice. Square footage stated or implied are approximate. Images may be representative of future home and show what's possible not what's included. Seller is a licensed real estate broker in the State of Oregon. CCB#203709*

