

Upland Meadows

Metolius
LOT 35

873 E Kinsley Ave Hermiston, OR 97838

🏠 4 Bedrooms

🚿 3 Bathrooms

📏 2,095 Sq. Ft.

🚗 2 Car Garage

🏷️ 419,997

SUMMER SAVINGS HAPPENING NOW!



U - CRAFTSMAN ELEVATION



The Metolius offers a welcoming 2,095 square-foot layout designed for both gathering and retreating. The main level features an open kitchen, dining area, and great room that naturally bring people together for meals, conversation, or quiet evenings at home. A full bedroom and bath downstairs add meaningful flexibility for guests or multigenerational living. Upstairs, the primary suite is paired with two additional bedrooms and a comfortable loft, creating space for rest, play, or daily routines. The Metolius blends connection and comfort in a way that feels both spacious and grounded.

MonteVista
HOMES

541-403-5150

In a continual effort to improve our product, MonteVista Homes reserves the right to change product design, features, materials, floor plans, specifications, prices and terms without prior notice. Square footage stated or implied are approximate. Images may be representative of future home and show what's possible not what's included. Seller is a licensed real estate broker in the State of Oregon. CCB#203709



Upland Meadows

Metolius
LOT 35

873 E Kinsley Ave Hermiston, OR 97838

🛏 4 Bedrooms

🚿 3 Bathrooms

🏠 2,095 Sq. Ft.

🚗 2 Car Garage

🏠 419,997

Metolius 2-Car

2,095 Sq. Ft.

4 Bedroom, 3 Bath



Upland Meadows

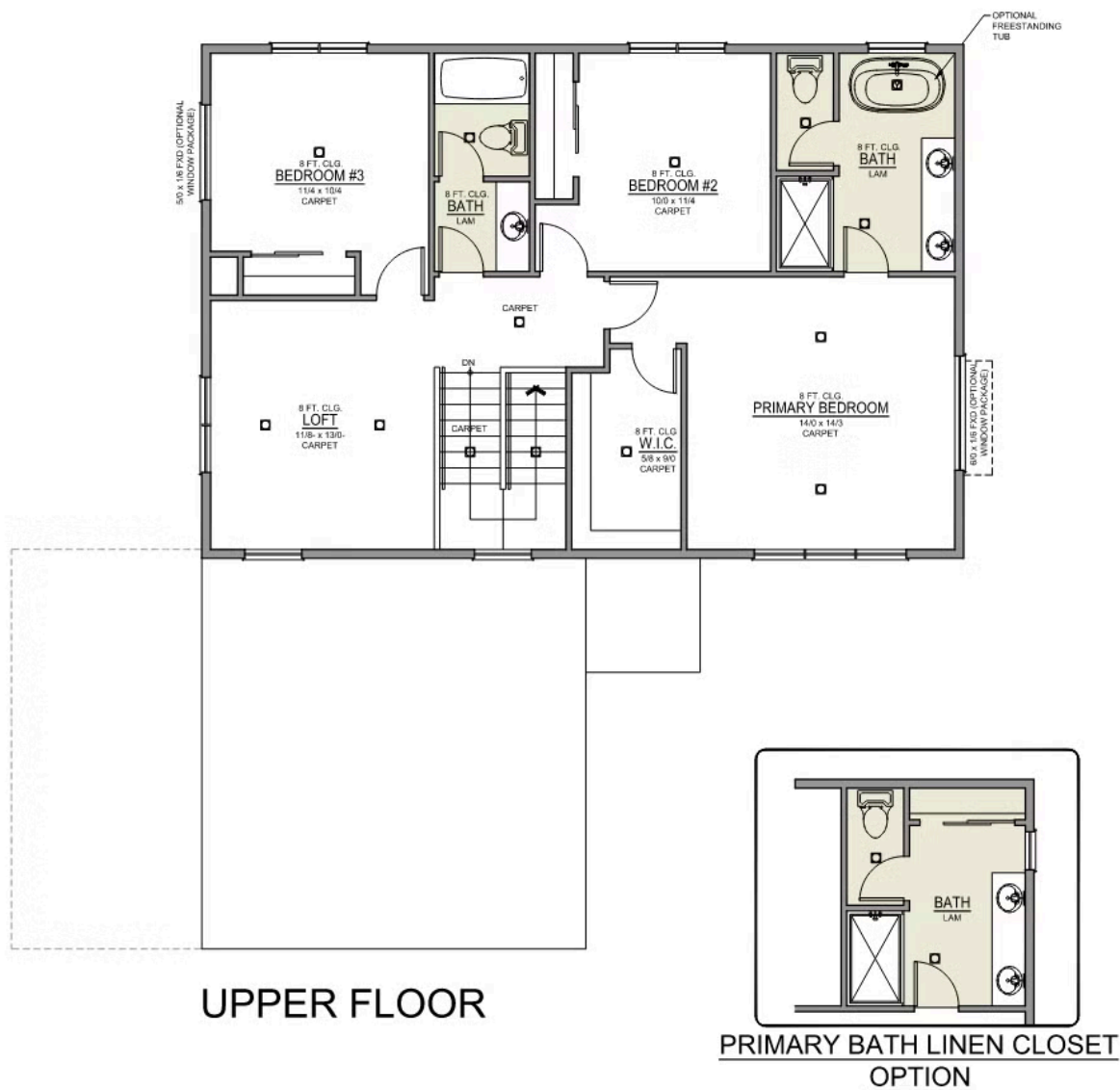
Metolius
LOT 35

873 E Kinsley Ave Hermiston, OR 97838

4 Bedrooms 3 Bathrooms 2,095 Sq. Ft. 2 Car Garage 419,997

Metolius 2-Car

2,095 Sq. Ft.
4 Bedroom, 3 Bath



Upland Meadows

OPTIONS

Metolius
LOT 35

873 E Kinsley Ave Hermiston, OR 97838

 4 Bedrooms

 3 Bathrooms

 2,095 Sq. Ft.

 2 Car Garage

 419,997

- Interior Color Package: "Crystal Heights". Comes with Stained Cabinets.
- Interior Walls/Trim: Walls - "Snowbound" , Trim - "Pure White"
- Exterior Color Package: Twilight Ridge
- Light Fixtures: Acadia
- Doors: Standard Hardware. Cove knobs / Amador front door handle.
- Bathroom: Upgrade finishes to BLACK. Soaker Tub INCLUDED. All bathrooms. (Plumbing Fixtures, bath accessories and shower door hardware)
- Bathroom: Every Glass Shower Enclosure - Color Choice - "Clear Glass".
- Electrical: Tech Package Pre Wire - Includes Panel, 110 outlet, 1 Dual Wall Plate (Coax & Ethernet) in Great Room
- Kitchen: Wall Range. 36" STAINED Cabinets. All Kitchen & Bath Cabs Stained. (Premier/Origin: Upgrade Kitchen to 36" Cabs. Distinct: N/A - As this is all included).
- Cabinets: Specify Color of Knobs and Pulls
- Counters: Quartz Counters and Backsplash (6") in Kitchen
- Counters: Quartz Counters and Backsplash in Guest Bath(s)
- Counters: Quartz Counters and Backsplash in Primary Bath
- Exterior Covered Patio: Rear - 12x10
- Flooring: Great Room - Wood Laminate (Casita Court)
- Flooring: Hallway Up & Linen Closets - Wood Laminate (Casita Court)
- Garage: Garage Door Opener
- Garage: Garage Door Opener Wireless Keypad
- HVAC: System - Air Conditioner (Includes PreWire).
*Not available for Duets.
- Fireplace: Electric Fireplace - Drywall Only w/ Mantle
- Kitchen: Farm Sink - Stainless Steel Single Bowl
REQUIRES QUARTZ COUNTERTOPS
- Kitchen or Laundry: Upgrade Faucet to Moen Arbor. SPECIFY Location(s) and Color. (Kitchen or Laundry. Black or Spot Resistant Stainless)
- Bathroom: Freestanding Soaker Tub

MonteVista
HOMES

541-403-5150

In a continual effort to improve our product, MonteVista Homes reserves the right to change product design, features, materials, floor plans, specifications, prices and terms without prior notice. Square footage stated or implied are approximate. Images may be representative of future home and show what's possible not what's included. Seller is a licensed real estate broker in the State of Oregon. CCB#203709

