

Upland Meadows

Sycamore Premier
LOT 8

850 NE Laurel Springs Dr Hermiston, OR 97838

3 Bedrooms 2 Bathrooms 1,553 Sq. Ft. 2 Car Garage 359,997

UNDER CONSTRUCTION



U - CRAFTSMAN, 2 CAR



- Kitchen Center Island with Sink
- Kitchen Pantry
- Great Room with Gas Fireplace

- Primary Suite with Walk-in Closet
- Quartz Countertops throughout Home
- Stainless Steel Appliances

MonteVista
HOMES

541-403-5150

In a continual effort to improve our product, MonteVista Homes reserves the right to change product design, features, materials, floor plans, specifications, prices and terms without prior notice. Square footage stated or implied are approximate. Images may be representative of future home and show what's possible not what's included. Seller is a licensed real estate broker in the State of Oregon. CCB#203709



Upland Meadows

Sycamore Premier
LOT 8

850 NE Laurel Springs Dr Hermiston, OR 97838

3 Bedrooms

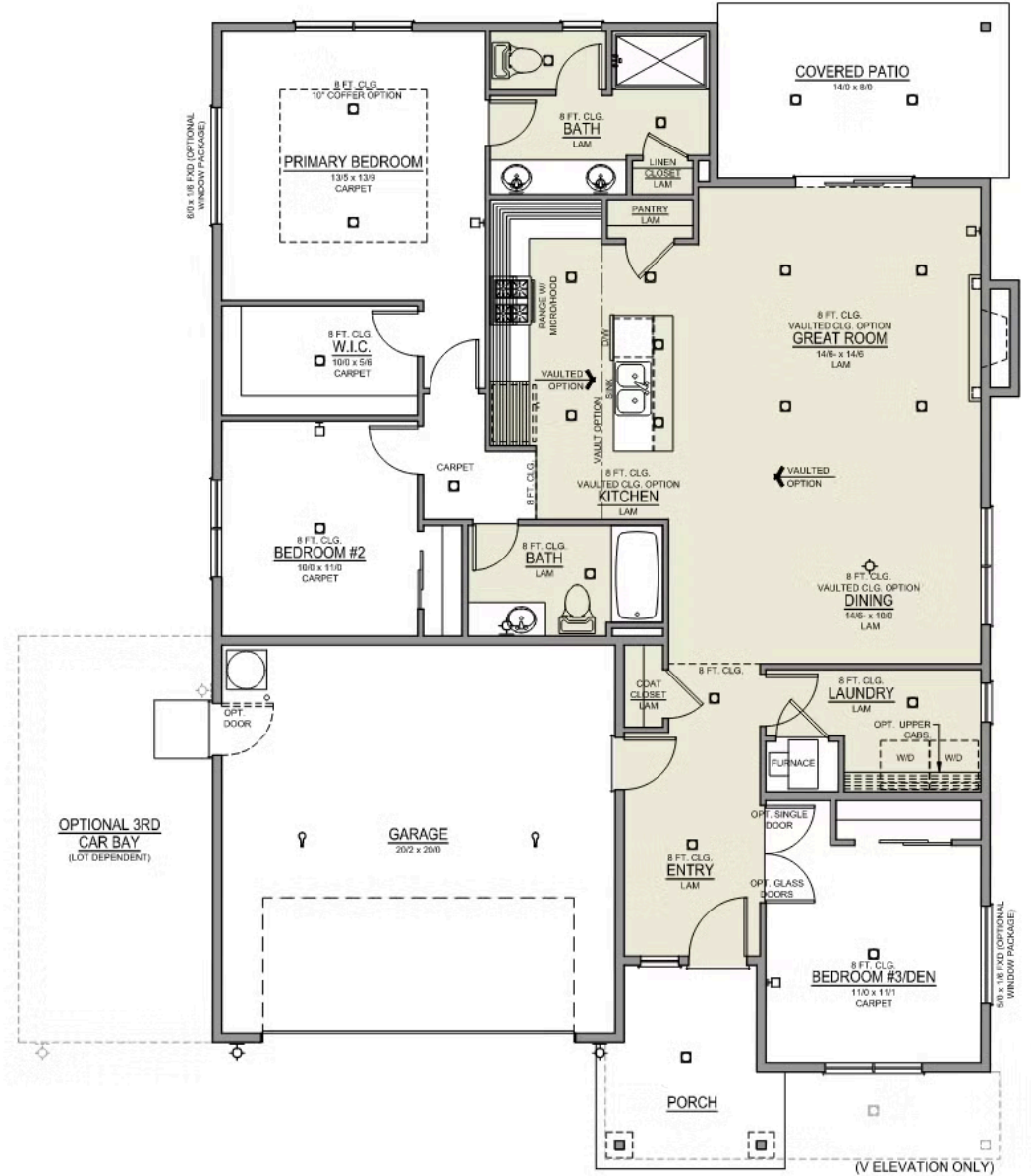
2 Bathrooms

1,553 Sq. Ft.

2 Car Garage

359,997

Sycamore 2-Car
1,553 Sq. Ft.
3 Bedroom, 2 Bath






Upland Meadows

OPTIONS

Sycamore Premier
LOT 8

850 NE Laurel Springs Dr Hermiston, OR 97838

 3 Bedrooms  2 Bathrooms  1,553 Sq. Ft.  2 Car Garage  359,997

- Interior Color Package: "Urban Oasis". Comes with Stained Cabinets.
- Interior Walls/Trim: Walls - "Pure White" , Trim - "Drift of Mist"
- Exterior Color Package: Cascade Falls
- Light Fixtures: Acadia
- Doors: Standard Hardware. Cove knobs / Amador front door handle.
- Bathroom: Upgraded finishes in Satin Nickel. Soaker Tub NOT included. All bathrooms. (Plumbing Fixtures, bath accessories and shower door hardware).
- Bathroom: Every Glass Shower Enclosure - Color Choice - "Clear Glass".
- Corner Lot Exterior Package: Includes Window trim on Corner Side, Flatwork and Corner Lot Landscaping up to the rear of the house.
- Electrical: Tech Package Pre Wire - Includes Panel, 110 outlet, 1 Dual Wall Plate (Coax & Ethernet) in Great Room
- Ceilings: (Premier Series Only) Vault in Great Room and Coffered Ceiling in Primary Bedroom.
- Kitchen: Wall Range. 30" PAINTED Cabinets. All Kitchen & Bath Cabs Painted. (Premier/Origin: Upgrade Kitchen Cabs to Painted. Distinct: Not Available)
- Cabinets: Specify Color of Knobs and Pulls
- Counters: Quartz Counters and Backsplash (6") in Kitchen
- Counters: Quartz Counters and Backsplash in Guest Bath
- Counters: Quartz Counters and Backsplash in Primary Bath
- Flooring: Hallway Down - Wood Laminate (Casita Court)
- Garage: Garage Door Opener
- Garage: Garage Door Opener Wireless Keypad
- HVAC: System - Air Conditioner (Includes PreWire).
*Not available for Duets.
- Fireplace: Electric Fireplace - Drywall Only w/ Mantle

MonteVista
HOMES

541-403-5150

In a continual effort to improve our product, MonteVista Homes reserves the right to change product design, features, materials, floor plans, specifications, prices and terms without prior notice. Square footage stated or implied are approximate. Images may be representative of future home and show what's possible not what's included. Seller is a licensed real estate broker in the State of Oregon. CCB#203709

