

Upland Meadows

Sycamore
LOT 34

867 E Kinsley Ave Hermiston, OR 97838

3 Bedrooms

2 Bathrooms

1,553 Sq. Ft.

2 Car Garage

374,000

UNDER CONSTRUCTION



The Sycamore delivers comfortable single-level living in a 1,553-square-foot, easy-to-maintain footprint. An open kitchen flows into the dining area and great room, creating a warm central space for gathering and everyday routines. The primary suite sits quietly at the back of the home, while two additional bedrooms offer flexibility for guests, work, or hobbies. With its inviting front porch, intuitive layout, and just-right amount of space, the Sycamore offers a relaxed, welcoming backdrop for the rhythms of daily life.

MonteVista
HOMES

541-403-5150

In a continual effort to improve our product, MonteVista Homes reserves the right to change product design, features, materials, floor plans, specifications, prices and terms without prior notice. Square footage stated or implied are approximate. Images may be representative of future home and show what's possible not what's included. Seller is a licensed real estate broker in the State of Oregon. CCB#203709



Upland Meadows

Sycamore
LOT 34

867 E Kinsley Ave Hermiston, OR 97838

3 Bedrooms

2 Bathrooms

1,553 Sq. Ft.

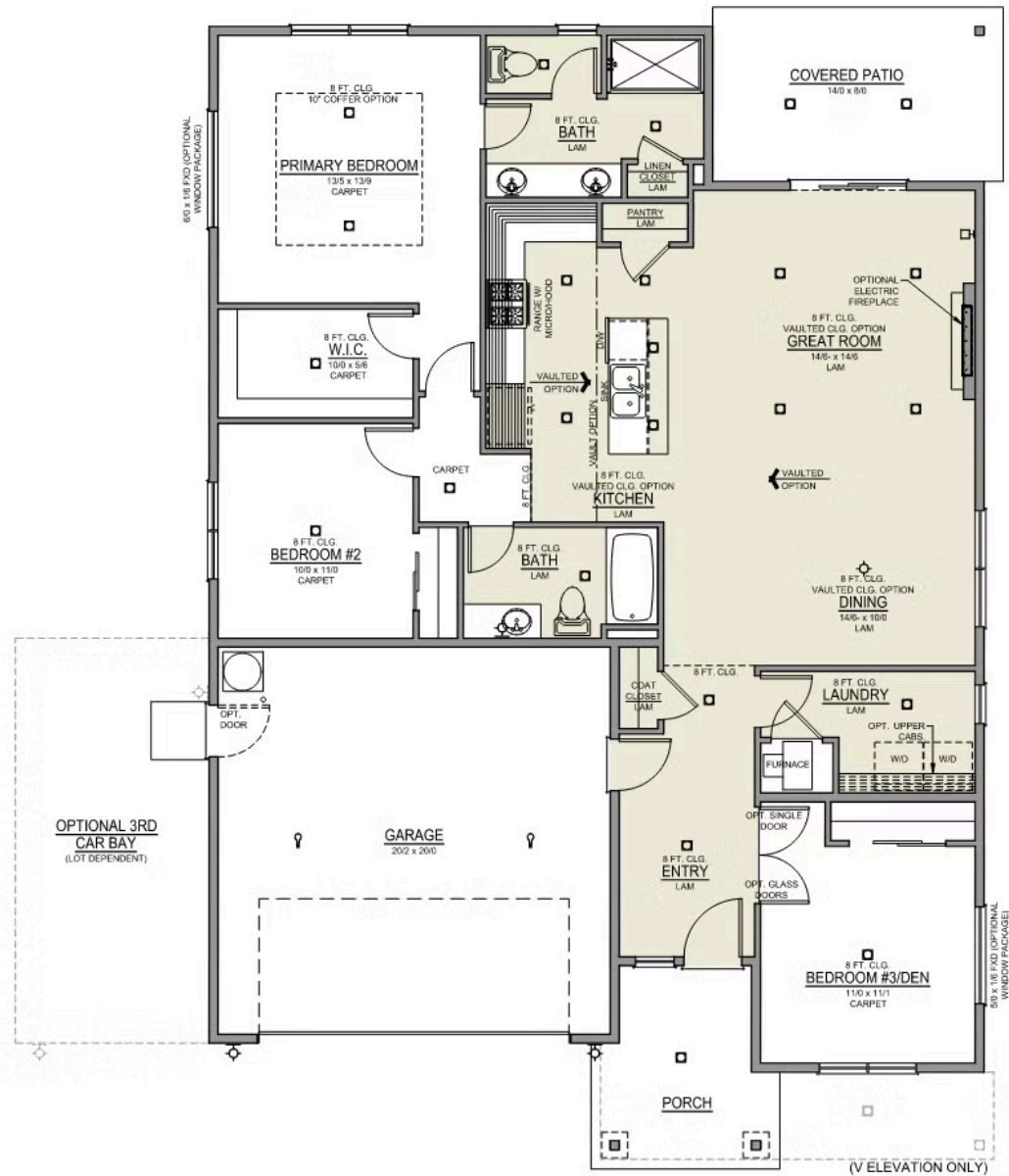
2 Car Garage

374,000

Sycamore 2-Car

1,553 Sq. Ft.

3 Bedroom, 2 Bath



Upland Meadows

OPTIONS

Sycamore
LOT 34


867 E Kinsley Ave Hermiston, OR 97838

 3 Bedrooms

 2 Bathrooms

 1,553 Sq. Ft.

 2 Car Garage

 374,000

- Interior Color Package: "Granite Shoreline". Includes Stained Cabinets.
- Interior Walls/Trim: Walls - "Snowbound" , Trim - "Pure White"
- Exterior Color Package: Spring Mist
- Light Fixtures: Acadia
- Doors: Standard Hardware. Cove knobs / Amador front door handle.
- Bathroom: Upgraded finishes in BLACK. Soaker Tub NOT included. All bathrooms. (Plumbing Fixtures, bath accessories and shower door hardware)
- Bathroom: Every Glass Shower Enclosure - Color Choice - "Clear Glass".
- Electrical: Tech Package Pre Wire - Includes Panel, 110 outlet, 1 Dual Wall Plate (Coax & Ethernet) in Great Room
- Ceilings: (Premier Series Only) Vault in Great Room and Coffered Ceiling in Primary Bedroom.
- Kitchen: Wall Range. 36" PAINTED Cabinets. All Kitchen & Bath Cabs Painted. (Premier/Origin: Upgrade Kitchen to 36" Painted Cabs. Distinct: Upgrade Kitchen Cabs to Painted).
- Cabinets: Specify Color of Knobs and Pulls
- Counters: Quartz Counters and Backsplash (6") in Kitchen
- Counters: Quartz Counters and Backsplash in Guest Bath(s)
- Counters: Quartz Counters and Backsplash in Primary Bath
- Electrical: Surface Mount LEDs. Add 2 for 4 total + Dimmer switch. For Primary Bedroom (N/A for Florence).
- Fencing: Cedar, Dog-eared, 6' tall. (50 ft Min. Order)
- Fencing: 4' wide Walk Gate. Cedar, Dog-eared, 6' tall.
- Flooring: Hallway Down & Linen Closets - Wood Laminate (Casita Court)
- Garage: Garage Door Opener
- Garage: Garage Door Opener Wireless Keypad
- HVAC: System - Air Conditioner (Includes PreWire). *Not available for Duets.
- Fireplace: Electric Fireplace - Drywall Only w/ Mantle
- Landscape: Backyard Landscaping. Up to a 60-ft wide lot
- Exterior: Stone Garage Wing Wall
- Kitchen: Farm Sink - Stainless Steel Single Bowl **REQUIRES QUARTZ COUNTERTOPS**
- Kitchen or Laundry: Upgrade Faucet to Moen Arbor. SPECIFY Location(s) and Color. (Kitchen or Laundry. Black or Spot Resistant Stainless)

MonteVista
HOMES

541-403-5150

In a continual effort to improve our product, MonteVista Homes reserves the right to change product design, features, materials, floor plans, specifications, prices and terms without prior notice. Square footage stated or implied are approximate. Images may be representative of future home and show what's possible not what's included. Seller is a licensed real estate broker in the State of Oregon. CCB#203709

