






Premier Collection

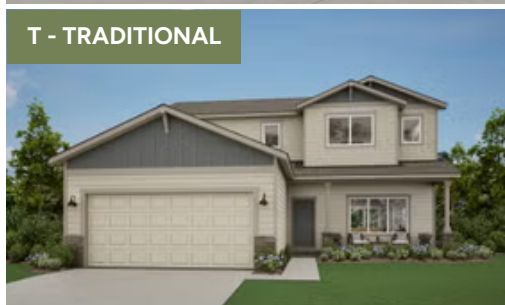
Thielsen Premier

Upland Meadows

 4 Bedrooms  2.5 Bathrooms  2,373 Sq. Ft.  2 Car Garage  From: \$419,997



T - TRADITIONAL



U - CRAFTSMAN



V - FARMHOUSE



- Primary Suite on Main Level with Walk-in Closet
- Great Room with Fireplace
- Upstairs Bonus Room / Loft
- Kitchen Island and Pantry
- 9 Foot Ceilings throughout Main Level
- Quartz Countertops throughout the Home
- Stainless Steel Appliances

MonteVista
HOMES

541-403-5150


In a continual effort to improve our product, MonteVista Homes reserves the right to change product design, features, materials, floor plans, specifications, prices and terms without prior notice. Square footage stated or implied are approximate. Images may be representative of future home and show what's possible not what's included. Seller is a licensed real estate broker in the State of Oregon. CCB#203709




Premier Collection


Thielsen Premier


Upland Meadows

 4 Bedrooms

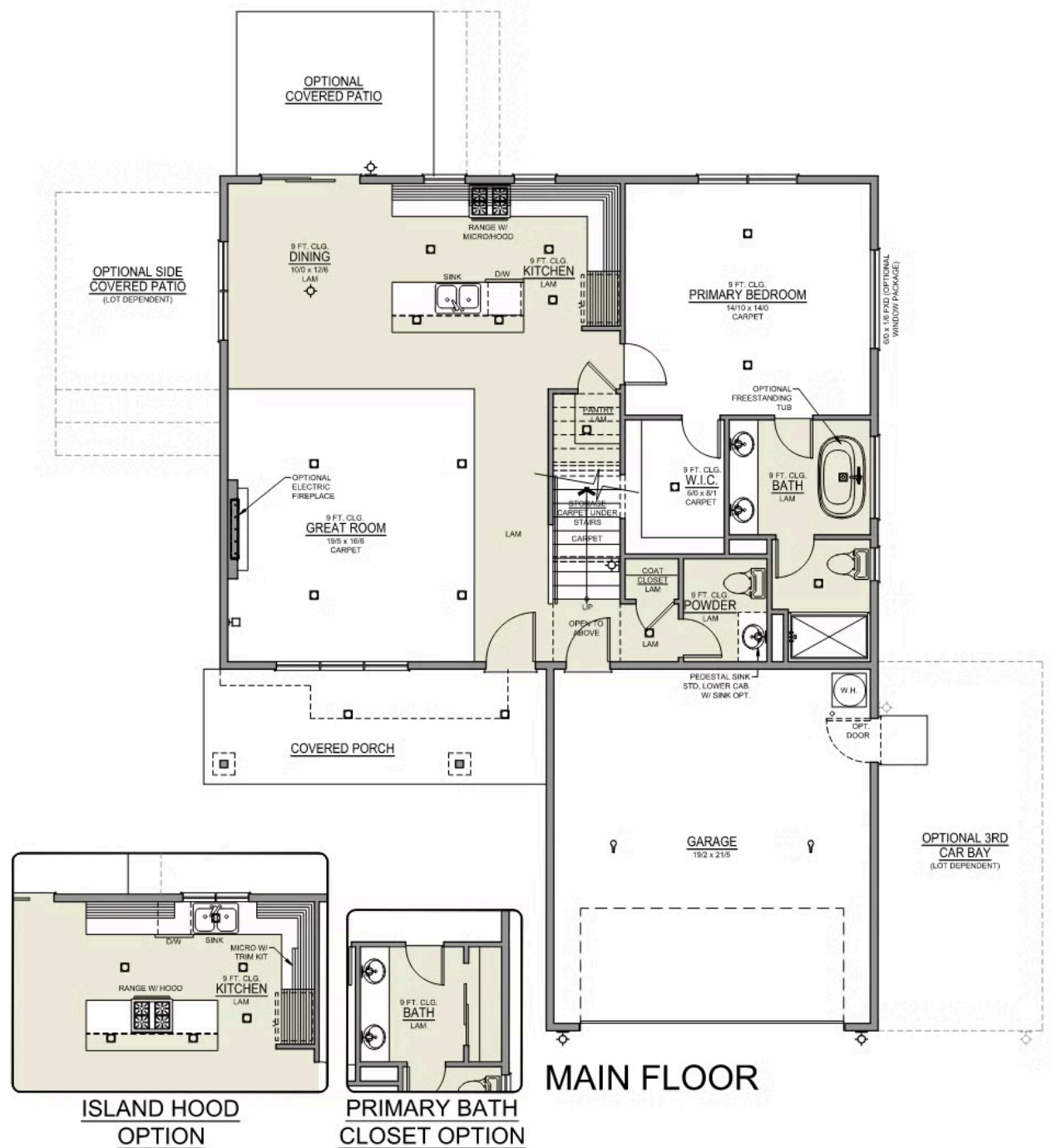
 2.5 Bathrooms

 2,373 Sq. Ft.

 2 Car Garage

 From: \$419,997

Thielsen 2-Car
2,373 Sq. Ft.
4 Bedroom, 3 Bath





Premier Collection


Thielsen Premier


Upland Meadows

 4 Bedrooms

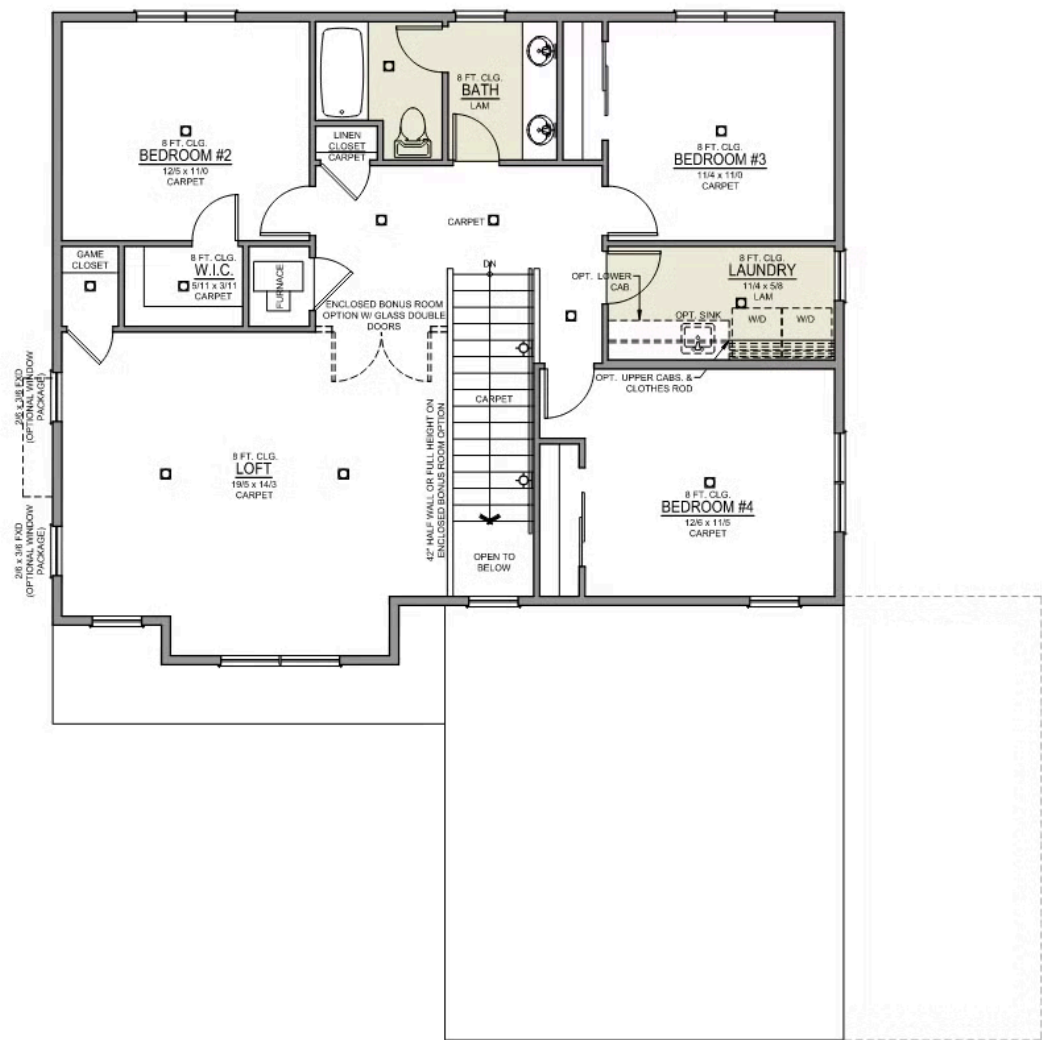
 2.5 Bathrooms

 2,373 Sq. Ft.

 2 Car Garage

 From: \$419,997

Thielsen 2-Car
2,373 Sq. Ft.
4 Bedroom, 3 Bath



UPPER FLOOR