

Upland Meadows

Thielsen Premier
LOT 11

851 NE Laurel Springs Dr Hermiston, OR 97838

4 Bedrooms 2.5 Bathrooms 2,373 Sq. Ft. 2 Car Garage 449,997

UNDER CONSTRUCTION



V - FARMHOUSE, 2 CAR



- Primary Suite on Main Level with Walk-in Closet
- Great Room with Fireplace
- Upstairs Bonus Room / Loft
- Kitchen Island and Pantry
- 9 Foot Ceilings throughout Main Level
- Quartz Countertops throughout the Home
- Stainless Steel Appliances

MonteVista
HOMES

541-403-5150

In a continual effort to improve our product, MonteVista Homes reserves the right to change product design, features, materials, floor plans, specifications, prices and terms without prior notice. Square footage stated or implied are approximate. Images may be representative of future home and show what's possible not what's included. Seller is a licensed real estate broker in the State of Oregon. CCB#203709



Upland Meadows

Thielsen Premier

LOT 11

851 NE Laurel Springs Dr Hermiston, OR 97838

4 Bedrooms

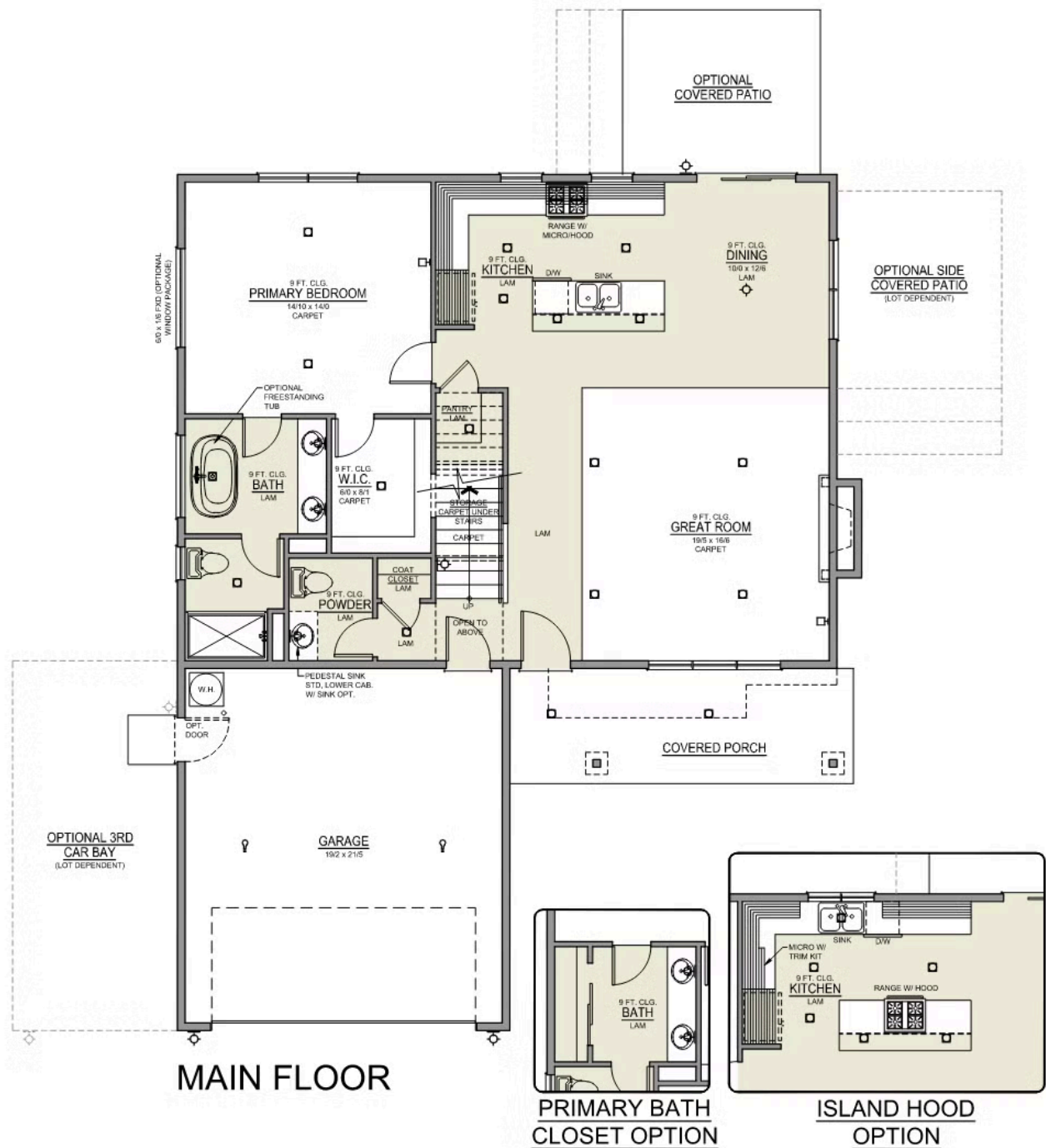
2.5 Bathrooms

2,373 Sq. Ft.

2 Car Garage

449,997

Thielsen 2-Car
2,373 Sq. Ft.
4 Bedroom, 3 Bath



Upland Meadows

Thielsen Premier
LOT 11

851 NE Laurel Springs Dr Hermiston, OR 97838

 4 Bedrooms

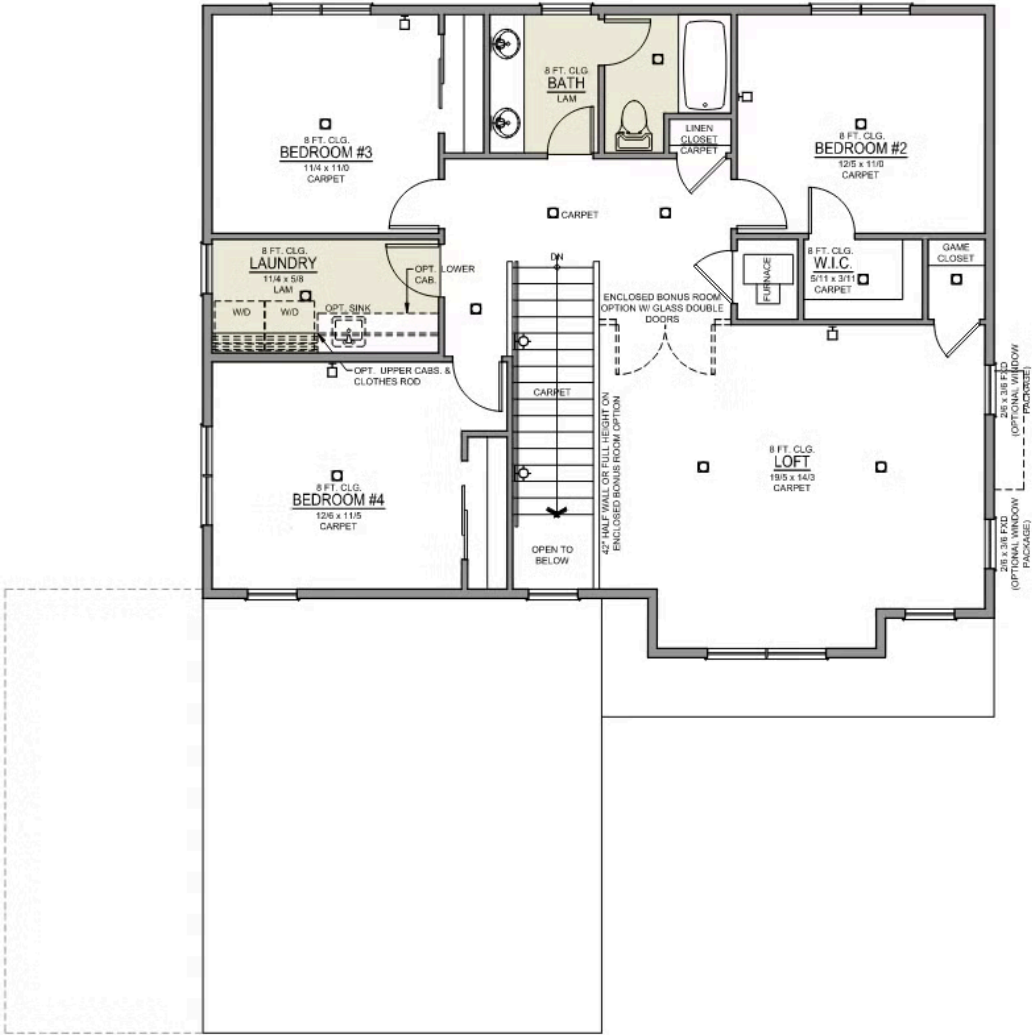
 2.5 Bathrooms

 2,373 Sq. Ft.

 2 Car Garage

 449,997

Thielsen 2-Car
2,373 Sq. Ft.
4 Bedroom, 3 Bath



UPPER FLOOR

Upland Meadows

OPTIONS

Thielsen Premier
LOT 11

851 NE Laurel Springs Dr Hermiston, OR 97838

 4 Bedrooms  2.5 Bathrooms  2,373 Sq. Ft.  2 Car Garage  449,997

- Interior Color Package: "Mountain Vogue". Comes with Stained Cabinets.
- Interior Walls/Trim: Walls - "Snowbound" , Trim - "Pure White"
- Exterior Color Package: Rustic Woods
- Light Fixtures: Acadia
- Doors: Standard Hardware. Cove knobs / Amador front door handle.
- Bathroom: Upgrade finishes to BLACK. Soaker Tub INCLUDED. All bathrooms. (Plumbing Fixtures, bath accessories and shower door hardware)
- Bathroom: Every Glass Shower Enclosure - Color Choice - "Clear Glass".
- Electrical: Tech Package Pre Wire - Includes Panel, 110 outlet, 1 Dual Wall Plate (Coax & Ethernet) in Great Room
- Windows Package: Optional Windows
- Kitchen: Base House (Premier/Origin). Wall Range, 30" STAINED Cabinets (All Kitchen & Bath Cabs Stained).
- Cabinets: Specify Color of Knobs and Pulls
- Counters: Quartz Counters and Backsplash (6") in Kitchen
- Counters: Quartz Counters and Backsplash in Guest Bath
- Counters: Quartz Counters and Backsplash in Primary Bath
- Exterior Covered Patio: Rear - 12x10
- Electrical: Flush-Mount LEDs. Add 2 for 4 total + Dimmer switch. For Primary Bedroom.
- Electrical: Flush-Mount LEDs. Add 2 for 4 total per room + Dimmer switch. Choose qty & specify which rooms: Bonus Room, Loft, or Origin Series' Great Room.
- Fencing: White Vinyl, 6' tall. (50 ft Min Order)
- Fencing: 4' wide Walk Gate. White Vinyl, 6' tall.
- Garage: Garage Door Opener
- Garage: Garage Door Opener Wireless Keypad
- HVAC: System - Air Conditioner (Includes PreWire).
*Not available for Duets.
- Fireplace: Electric Fireplace - Drywall Only w/ Mantle
- Landscape: Backyard Landscaping. Up to a 60-ft wide lot
- Bathroom: Freestanding Soaker Tub

MonteVista
HOMES

541-403-5150

In a continual effort to improve our product, MonteVista Homes reserves the right to change product design, features, materials, floor plans, specifications, prices and terms without prior notice. Square footage stated or implied are approximate. Images may be representative of future home and show what's possible not what's included. Seller is a licensed real estate broker in the State of Oregon. CCB#203709

