

Upland Meadows

Thielsen Premier
LOT 23

884 E Kinsley Ave Hermiston, OR 97838

4 Bedrooms 2.5 Bathrooms 2,373 Sq. Ft. 2 Car Garage 417,853

UNDER CONSTRUCTION



T - TRADITIONAL, 2 CAR



- Primary Suite on Main Level with Walk-in Closet
- Great Room with Fireplace
- Upstairs Bonus Room / Loft
- Kitchen Island and Pantry
- 9 Foot Ceilings throughout Main Level
- Quartz Countertops throughout the Home
- Stainless Steel Appliances

MonteVista
HOMES

541-403-5150

In a continual effort to improve our product, MonteVista Homes reserves the right to change product design, features, materials, floor plans, specifications, prices and terms without prior notice. Square footage stated or implied are approximate. Images may be representative of future home and show what's possible not what's included. Seller is a licensed real estate broker in the State of Oregon. CCB#203709



Upland Meadows

Thielsen Premier

LOT 23

884 E Kinsley Ave Hermiston, OR 97838

4 Bedrooms

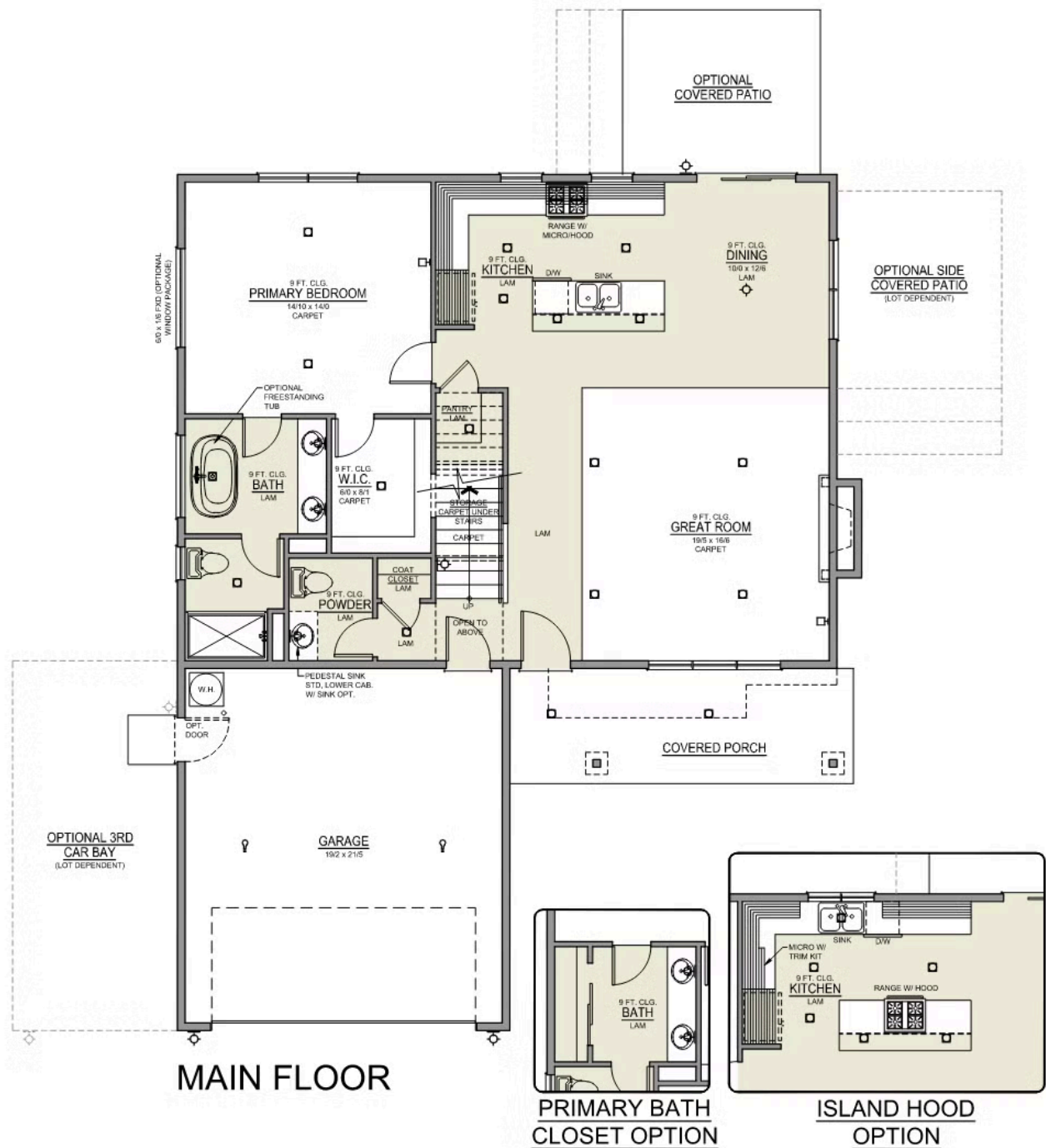
2.5 Bathrooms

2,373 Sq. Ft.

2 Car Garage

417,853

Thielsen 2-Car
2,373 Sq. Ft.
4 Bedroom, 3 Bath



Upland Meadows

Thielsen Premier
LOT 23

884 E Kinsley Ave Hermiston, OR 97838

4 Bedrooms

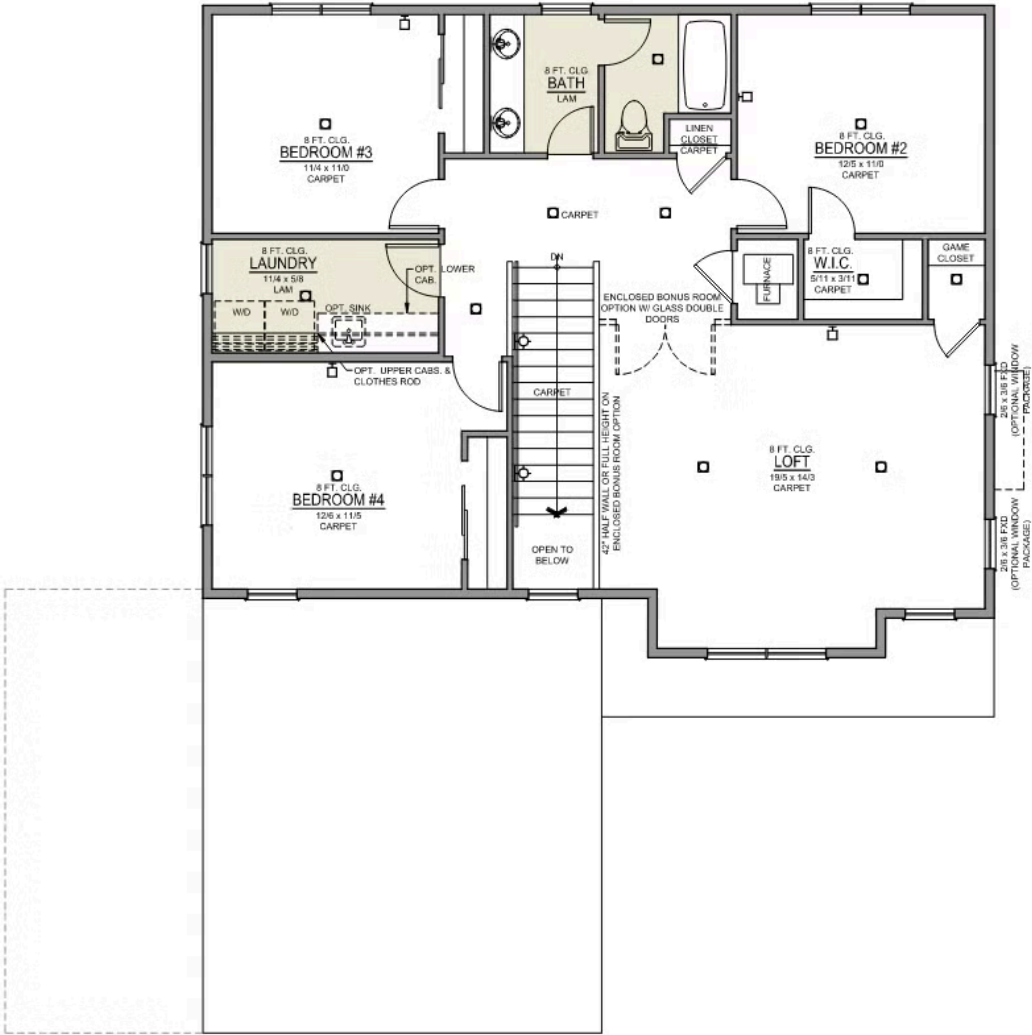
2.5 Bathrooms

2,373 Sq. Ft.

2 Car Garage

417,853

Thielsen 2-Car
2,373 Sq. Ft.
4 Bedroom, 3 Bath



UPPER FLOOR

Upland Meadows

OPTIONS

Thielsen Premier
LOT 23

884 E Kinsley Ave Hermiston, OR 97838

 4 Bedrooms  2.5 Bathrooms  2,373 Sq. Ft.  2 Car Garage  417,853

- Interior Color Package: "Crystal Heights". Comes with Painted Cabinets.
- Exterior Color Package: Twilight Ridge
- Light Fixtures: Acadia
- Doors: Standard Hardware. Cove knobs / Amador front door handle.
- Bathroom: Every Glass Shower Enclosure - Color Choice - "Clear Glass".
- Electrical: Tech Package Pre Wire - Includes Panel, 110 outlet, 1 Dual Wall Plate (Coax & Ethernet) in Great Room
- Kitchen: Wall Range. 36" STAINED Cabinets. Upgrade to 36" high Cabs in Kitchen. All Kitchen & Bath Cabs Stained (For Included Wall Range Configuration - Premier/Origin Series)
- Cabinets: Specify Color of Knobs and Pulls
- Counters: Quartz Counters and Backsplash (6") in Kitchen
- Counters: Quartz Counters and Backsplash in Guest Bath
- Counters: Quartz Counters and Backsplash in Primary Bath
- Exterior Covered Patio: Rear - 16x10
- Garage: Garage Door Opener
- Garage: Garage Door Opener Wireless Keypad
- HVAC: System - Air Conditioner (Includes PreWire).
*Not available for Duets.
- Fireplace: Electric Fireplace - Drywall Only w/ Mantle
- Garage: Insulated 2 Car Garage & Hope Plan 3 Car - Insulated Walls and Ceiling (Includes Insulated Garage Door).
- Bathroom: Freestanding Soaker Tub

MonteVista
HOMES

541-403-5150

In a continual effort to improve our product, MonteVista Homes reserves the right to change product design, features, materials, floor plans, specifications, prices and terms without prior notice. Square footage stated or implied are approximate. Images may be representative of future home and show what's possible not what's included. Seller is a licensed real estate broker in the State of Oregon. CCB#203709

