

Willowbrook

Aspen Premier
LOT 139

1465 NW Willow Parkway Madras, OR 97741

3 Bedrooms 2 Bathrooms 1,702 Sq. Ft. 2 Car Garage 414,900

UNDER CONSTRUCTION



V - FARMHOUSE



- Quartz Countertops throughout Home
- Stainless Steel Appliances
- Kitchen Island with Sink
- Corner Kitchen Pantry

- Great Room with Electric Fireplace
- Primary Suite with Walk-in Closet
- Laundry/Mud Room Access from garage


MonteVista
HOMES

541-234-8789

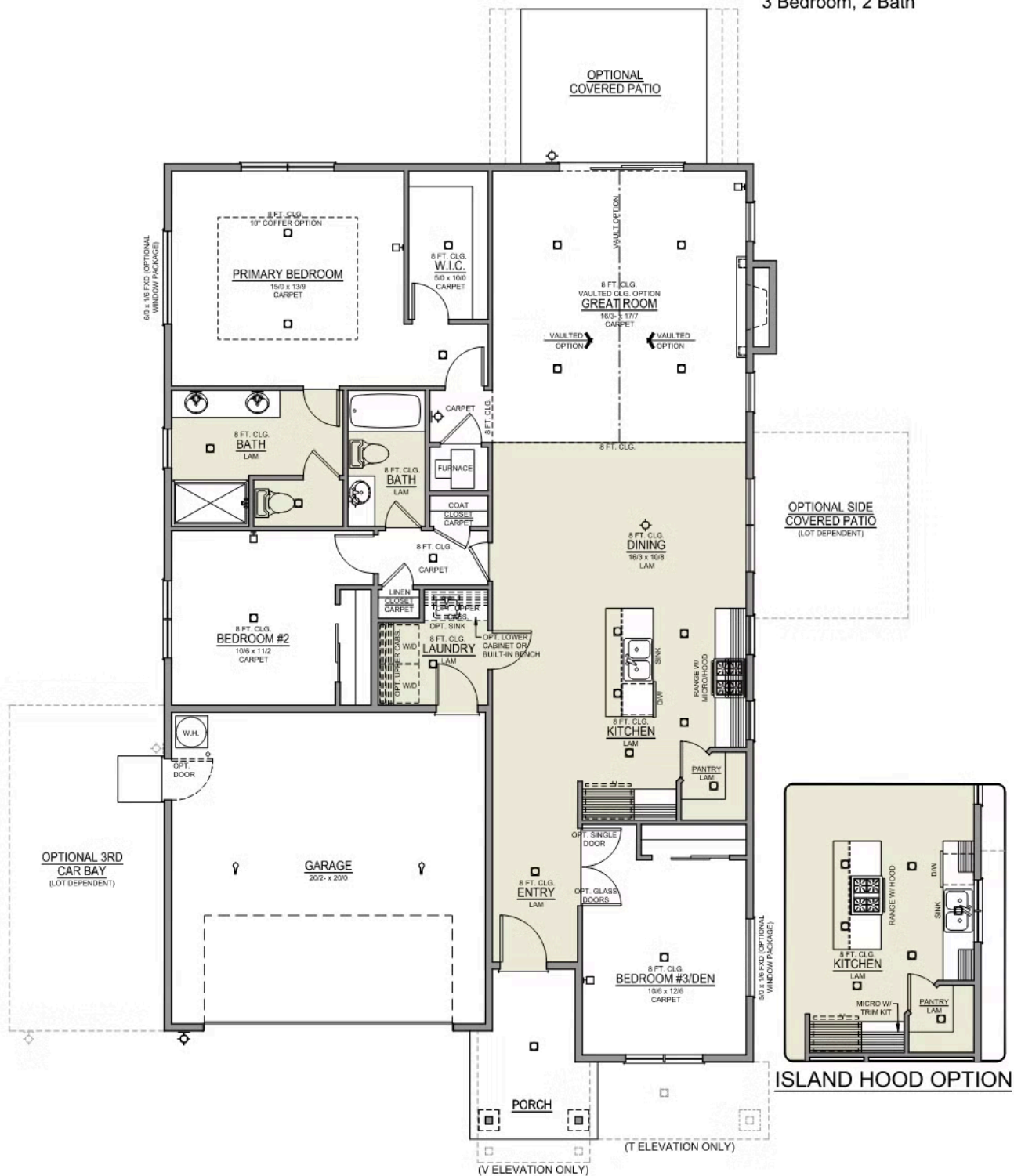
In a continual effort to improve our product, MonteVista Homes reserves the right to change product design, features, materials, floor plans, specifications, prices and terms without prior notice. Square footage stated or implied are approximate. Images may be representative of future home and show what's possible not what's included. Seller is a licensed real estate broker in the State of Oregon. CCB#203709



1465 NW Willow Parkway Madras, OR 97741

 414,900

3 Bedroom, 2 Bath








Willowbrook

OPTIONS

Aspen Premier
LOT 139

1465 NW Willow Parkway Madras, OR 97741

 3 Bedrooms  2 Bathrooms  1,702 Sq. Ft.  2 Car Garage  414,900

- Interior Color Package: "Crystal Heights". Painted Cabinets (All cabinets in house MUST be selected as "PAINTED")
- Exterior Color Package: Rustic Woods
- Light Fixtures: Acadia
- Doors: Hardware Standard. "Cove" knobs / "Amador" front door handle.
- Bathroom: Upgraded finishes in BLACK. Soaker Tub NOT included. All bathrooms. (Plumbing Fixtures, bath accessories and shower door hardware)
- Bathroom: Shower Enclosure(s) Glass Color Choice
- Electrical: Tech Package Pre Wire - Includes Panel, 110 outlet, 1 Dual Wall Plate (Coax & Ethernet) in Great Room
- Windows Package: Optional Windows
- Ceilings: (Premier Series Only) Vault in Great Room and Coffered Ceiling in Primary Bedroom.
- Kitchen: 36" Cabinets. PAINTED Kitchen & Bathroom Cabinets.
- Cabinets: Specify Color of Knobs and Pulls
- Counters: Quartz Counters and Backsplash in Kitchen
- Counters: Quartz Counters and Backsplash in Guest Bath
- Counters: Quartz Counters and Backsplash in Primary Bath
- Exterior Covered Patio: Rear - 12x10
- Kitchen: Pendant Lights over Kitchen Island - In place of recessed LED
- Doors: Kitchen Pantry Door w/ Glass (Frosted w/ Border).
- Flooring: Hallway Down - Wood Laminate (Casita Court)
- Garage: Garage Door Opener
- Garage: Garage Door Opener Wireless Keypad
- HVAC: Air Conditioner Only (Optional "PreWire" must be previously selected).
- HVAC: Air Conditioner PreWire. Dedicated 220 Outlet (For AC or Mini Split)
- Fireplace: Gas Fireplace (Direct Vent) with Mantel and Stone Surround
- Kitchen: Farm Sink - Stainless Steel Single Bowl
REQUIRES QUARTZ COUNTERTOPS
- Kitchen or Laundry Sink: Upgrade Faucet to Moen Arbor. SPECIFY Location(s) and Color (Kitchen or Laundry, and Black or Spot Resistant Stainless).

MonteVista
HOMES

541-234-8789

In a continual effort to improve our product, MonteVista Homes reserves the right to change product design, features, materials, floor plans, specifications, prices and terms without prior notice. Square footage stated or implied are approximate. Images may be representative of future home and show what's possible not what's included. Seller is a licensed real estate broker in the State of Oregon. CCB#203709

