

# Willowbrook

Aspen  
LOT 122

429 NW Monte Vista Ave. Madras, OR 97741

3 Bedrooms

2 Bathrooms

1,702 Sq. Ft.

2 Car Garage

400,000

UNDER CONSTRUCTION



T - TRADITIONAL ELEVATION



The Aspen blends thoughtful design with everyday livability in 1,702 square feet that feels both spacious and comfortable. An open kitchen and great room naturally bring people together around meals, homework, or quiet evenings by the fireplace. The spacious primary suite offers a private place to unwind at the end of the day. Two additional bedrooms provide flexibility for guests or work, and the overall flow keeps daily routines feeling simple and connected. With its practical layout and welcoming presence, the Aspen feels like home the moment you enter.

MonteVista  
HOMES

541-234-8789

*In a continual effort to improve our product, MonteVista Homes reserves the right to change product design, features, materials, floor plans, specifications, prices and terms without prior notice. Square footage stated or implied are approximate. Images may be representative of future home and show what's possible not what's included. Seller is a licensed real estate broker in the State of Oregon. CCB#203709*



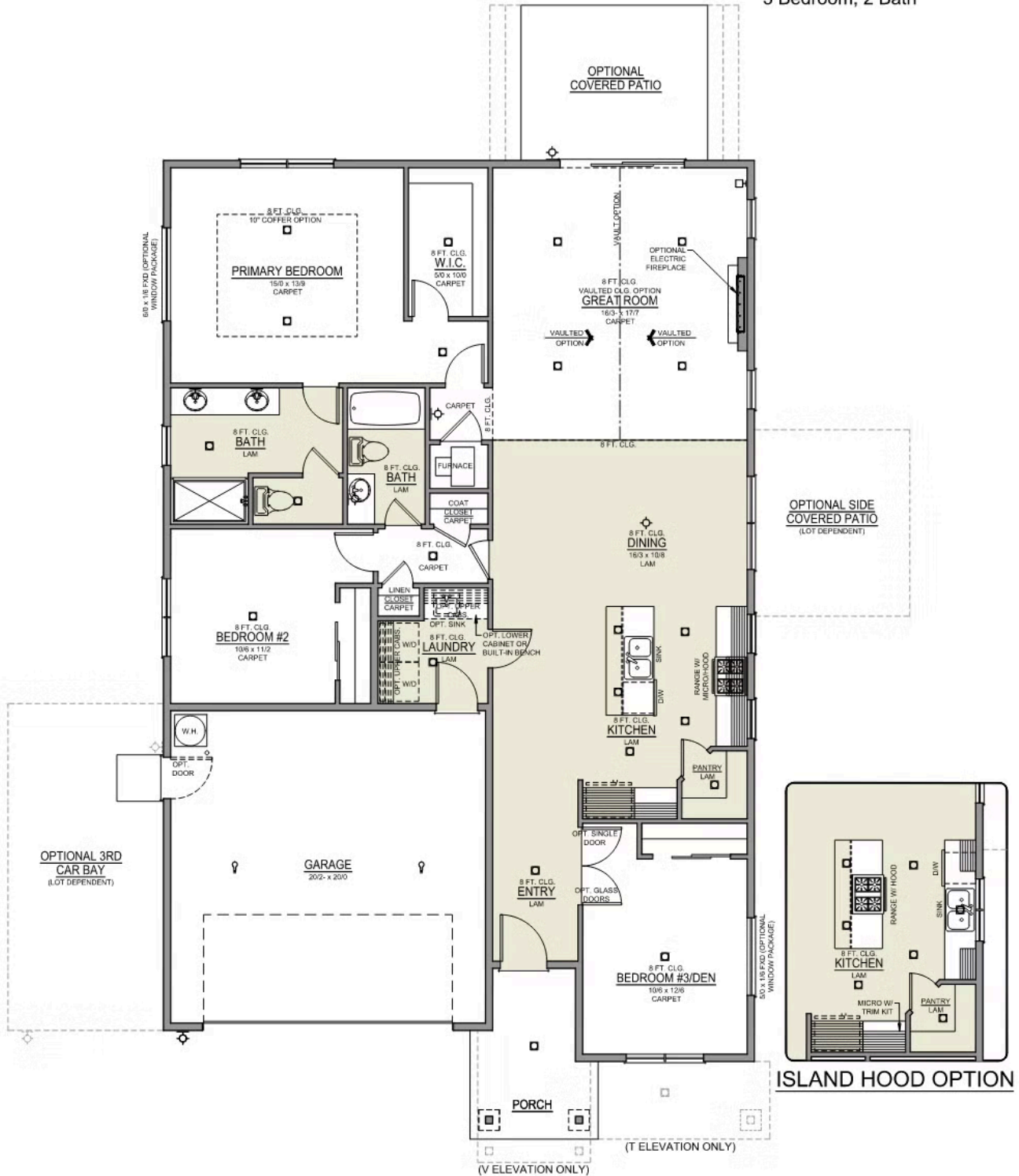
# Willowbrook

Aspen  
LOT 122

429 NW Monte Vista Ave. Madras, OR 97741






3 Bedrooms 2 Bathrooms 1,702 Sq. Ft. 2 Car Garage 400,000

**Aspen 2-Car**  
1,702 Sq. Ft.  
3 Bedroom, 2 Bath



## OPTIONS

429 NW Monte Vista Ave. Madras, OR 97741

 3 Bedrooms  2 Bathrooms  1,702 Sq. Ft.  2 Car Garage  400,000

- Interior Color Package: "Granite Shoreline". Painted Cabinets (All cabinets in house MUST be selected as "PAINTED")
- Exterior Color Package: Cascade Falls
- Light Fixtures: Acadia
- Doors: Standard Hardware. Cove knobs / Amador front door handle.
- Bathroom: Shower Enclosure(s) Glass Color Choice
- Electrical: Tech Package Pre Wire - Includes Panel, 110 outlet, 1 Dual Wall Plate (Coax & Ethernet) in Great Room
- Windows Package: Optional Windows
- Ceilings: (Premier Series Only) Vault in Great Room and Coffered Ceiling in Primary Bedroom.
- Kitchen: 36" Cabinets. PAINTED Kitchen & Bathroom Cabinets.
- Cabinets: Specify Color of Knobs and Pulls
- Counters: Quartz Counters and Backsplash in Kitchen
- Counters: Quartz Counters and Backsplash in Guest Bath
- Counters: Quartz Counters and Backsplash in Primary Bath
- Doors: Kitchen Pantry Door w/ Glass (Frosted w/ Border).
- Flooring: Hallway Down - Wood Laminate (Casita Court)
- Garage: Garage Door Opener
- Garage: Garage Door Opener Wireless Keypad
- HVAC: PreWire Only. For future Air Conditioner or Mini Split. Dedicated 220 Outlet.
- Fireplace: Electric Fireplace - Drywall Only w/ Mantle
- Kitchen: Farm Sink - Stainless Steel Single Bowl  
\*\*REQUIRES QUARTZ COUNTERTOPS\*\*
- Kitchen or Laundry Sink: Upgrade Faucet to Moen Arbor. SPECIFY Location(s) and Color (Kitchen or Laundry, and Black or Spot Resistant Stainless).