

Willowbrook

Charity Premier
LOT 145

1256 NW Fairway Rd. Madras, OR 97741

3 Bedrooms 2 Bathrooms 1,892 Sq. Ft. 3 Car Garage 512,997

UNDER CONSTRUCTION



U - CRAFTSMAN



- Quartz Countertops throughout the home
- Free-Standing Soaking Tub
- Office, Study, or School Room
- Great Room with Fireplace
- Corner Kitchen Pantry
- Laundry/Mud room access from Garage
- Smart Home Ready

MonteVista
HOMES

541-234-8789

In a continual effort to improve our product, MonteVista Homes reserves the right to change product design, features, materials, floor plans, specifications, prices and terms without prior notice. Square footage stated or implied are approximate. Images may be representative of future home and show what's possible not what's included. Seller is a licensed real estate broker in the State of Oregon. CCB#203709



Willowbrook

Charity Premier
LOT 145

1256 NW Fairway Rd. Madras, OR 97741

 3 Bedrooms

 2 Bathrooms

 1,892 Sq. Ft.

 3 Car Garage

 512,997

Charity 2-Car
1,892 Sq. Ft.
3 Bedroom, 2 Bath



 3 Bedrooms

 2 Bathrooms

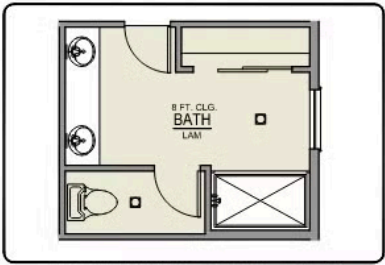
 1,892 Sq. Ft.

 3 Car Garage

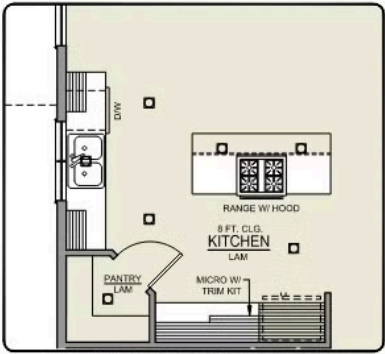
 512,997

Charity 2-Car

1,892 Sq. Ft.
3 Bedroom, 2 Bath



PRIMARY BATH LINEN
CLOSET OPTION



ISLAND HOOD OPTION

OPTIONS

1256 NW Fairway Rd. Madras, OR 97741

 512,997

- Interior Color Package: "Granite Shoreline". Comes with Stained Cabinets.
 - Interior Walls/Trim: Walls - "Drift of Mist" , Trim - "Pure White"
 - Exterior Color Package: Twilight Ridge
 - Light Fixtures: Acadia
 - Doors: Standard Hardware. Cove knobs / Amador front door handle.
 - Bathroom: Upgrade finishes to BLACK. Soaker Tub INCLUDED. All bathrooms. (Plumbing Fixtures, bath accessories and shower door hardware)
 - Bathroom: Every Glass Shower Enclosure - Color Choice - "Clear Glass".
 - Appliances Package: Washer & Dryer (Electric)
 - Electrical: Tech Package Pre Wire - Includes Panel, 110 outlet, 1 Dual Wall Plate (Coax & Ethernet) in Great Room
 - Windows Package: Optional Windows
 - Ceilings: (Premier Series Only) Vault in Great Room and Coffered Ceiling in Primary Bedroom.
 - Kitchen: Island Range/Hood. 36" PAINTED Cabinets. All Kitchen & Bath Cabs Painted. Sliding Window over the sink.
 - Appliances: Refrigerator - French Door
 - Laundry Uppers: Add 30" PAINTED Upper Cabs above Washer/Dryer. (Premier/Origin Series)
 - Laundry Uppers: Add Upper Cabinets above Lower Cabinets. 30" PAINTED (Premier/Origin Series)
 - Laundry Lower: Add Lower Cabs & Sink PAINTED. Quartz Top & Backsplash. Includes Moen-Integra Stainless Pull-Out Faucet. ** FOR AN UPGRADED FAUCET IN BLACK OR STAINLESS, BUYER MUST UPGRADE TO A MOEN ARBOR FAUCET.
 - Cabinets: Specify Color of Knobs and Pulls
 - Kitchen: Full Height Tile Backsplash
 - Counters: Quartz Counters and Backsplash (6") in Kitchen
 - Counters: Quartz Counters and Backsplash in Guest
 - Electrical: Interior - In-Floor Outlet (Includes Return Trip to pull wires and set plates after move in)
 - Kitchen: Under Cabinet Lighting
 - Fencing: Cedar, Shadow Box, 6' tall. (50 ft Min. Order)
 - Fencing: 4' wide Walk Gate. Cedar, Shadow Box, 6' tall,
 - Doors: Upgrade Den. Replace Solid Double Doors with Full-Light Glass Double Doors.
 - Doors: Upgrade Front Door. CRAFTSMAN with upper Clear Glass window
 - Doors: Upgrade Interior Doors. 5-Panel. (Includes Fire Door).
 - Garage: Man Door (Exterior door from garage to outside). Includes: Exterior coach light, 6'-8" 2-Panel door, and 40"x36" concrete landing.
 - Doors: Upgrade Kitchen Pantry Door. Glass - Frosted w/ Border.
 - Flooring: Great Room - Wood Laminate (Casita Court)
 - Flooring: Hallway Down - Wood Laminate (Casita Court)
 - Garage: Garage Door Glass. Double Car Door
 - Garage: Garage Door Glass. Single Car Door
 - Garage: Garage Door Opener
 - Garage: Garage Door Opener Wireless Keypad
 - Garage: Third Car Garage
 - Garage: Third Car Garage Door Opener
 - HVAC: Air Conditioner Only (Optional "PreWire" must be previously selected).
 - HVAC: PreWire Only. For future Air Conditioner or Mini Split. Dedicated 220 Outlet.
 - Fireplace: Electric Fireplace - Drywall Only w/ Mantle
 - Fireplace: Add Shiplap to Electric Fireplace
 - Garage: Insulated 2 Car Garage - Insulated Walls and Ceiling (Includes Insulated Garage Door).
 - Garage: Insulated 3 Car Garage - Insulated Walls and Ceiling (Includes Insulated Garage Doors).
 - Exterior: Stone on all Front Column(s)
 - Exterior: Stone Garage Wing Wall

Monte Vista

- Counters (Cus)

Both
In a continual effort to improve our product, MonteVista Homes reserves the right to change product design, features, materials, floor plans, specifications, prices and terms without prior notice. Square footage stated or implied are approximate. Images may be representative of future home and show what's possible not what's included. Seller **REQUIRES QUARTZ COUNTERTOPS**
Oregon, CCB#203709
Both

- Bathroom: Shampoo Niche in Tile Shower 16x22.

- Kitchen or Laundry: Upgrade Faucet to Moen Arbor.
SPECIFY Location(s) and Color. (Kitchen or Laundry)

