

Willowbrook

Charity Premier
LOT 26

308 NW Monte Vista Ave. Madras, OR 97741

🏠 3 Bedrooms

🚿 2 Bathrooms

📏 1,892 Sq. Ft.

🚗 3 Car Garage

🏷️ 459,997

UNDER CONSTRUCTION



V - FARMHOUSE ELEVATION 3 -CAR



The Charity stands out for how it uses its 1,892 square feet to balance openness with real-life versatility. A front bedroom sits just off the entry, making it a perfect home office, schoolroom, or dedicated play space separate from the main living areas. The second bedroom connects to the hallway bath, creating a comfortable second en suite for guests. At the heart of the home, the open kitchen, dining, and great room foster natural gatherings throughout the day. With its thoughtful layout and flexible spaces, the Charity supports a range of everyday moments with ease.

MonteVista
HOMES

541-234-8789

In a continual effort to improve our product, MonteVista Homes reserves the right to change product design, features, materials, floor plans, specifications, prices and terms without prior notice. Square footage stated or implied are approximate. Images may be representative of future home and show what's possible not what's included. Seller is a licensed real estate broker in the State of Oregon. CCB#203709



Willowbrook

Charity Premier LOT 26

308 NW Monte Vista Ave. Madras, OR 97741

🏠 3 Bedrooms

🚿 2 Bathrooms

🏠 1,892 Sq. Ft.

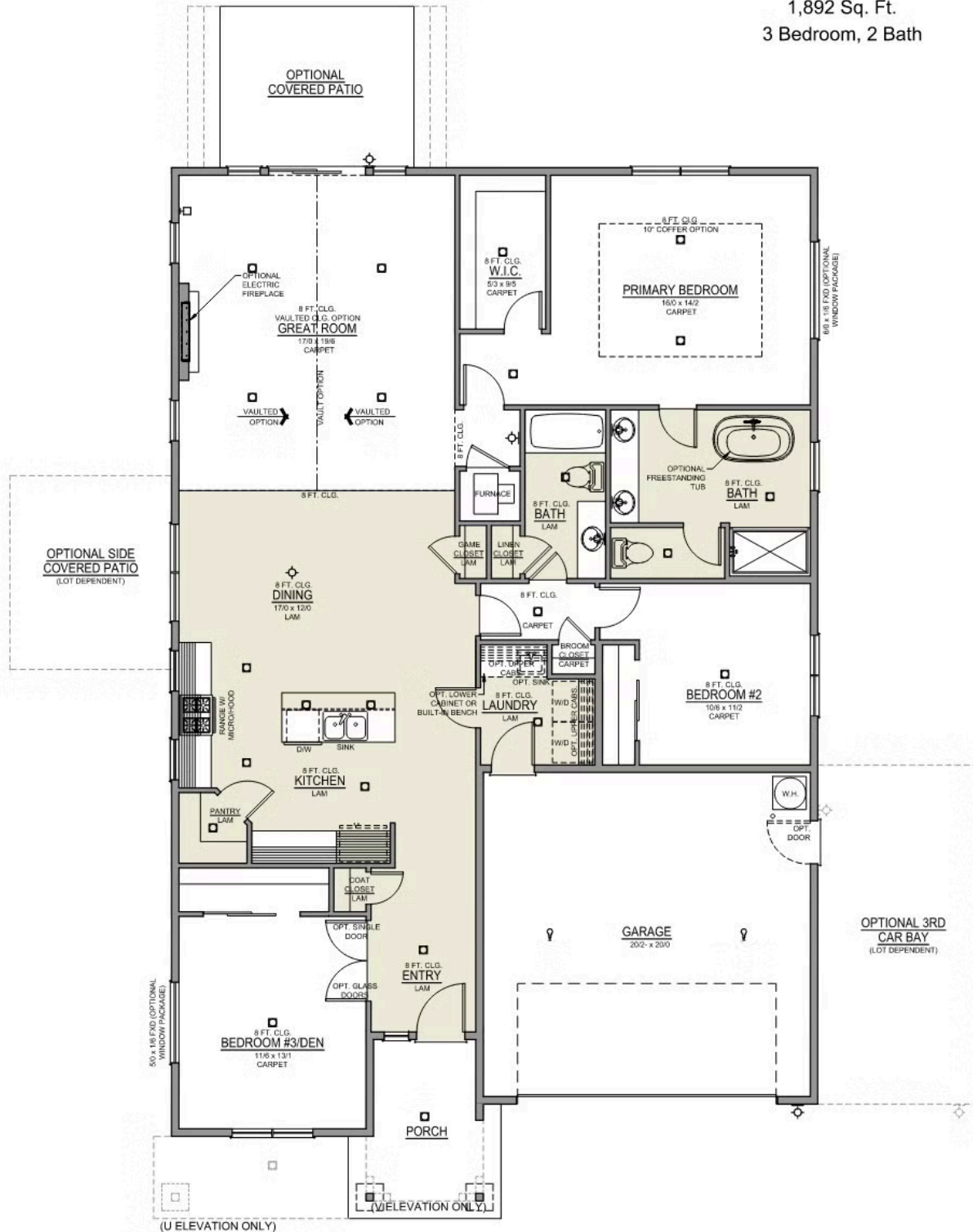
🚗 3 Car Garage

💰 459,997

Charity 2-Car

1,892 Sq. Ft.

3 Bedroom, 2 Bath



3 Bedrooms

2 Bathrooms

1,892 Sq. Ft.

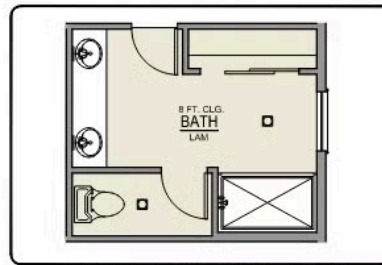
3 Car Garage

459,997

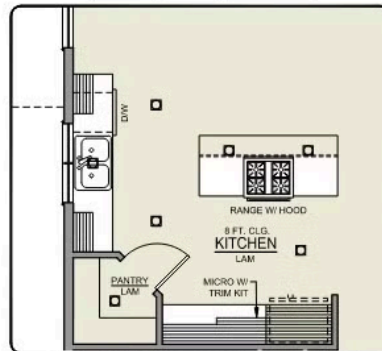
Charity 2-Car

1,892 Sq. Ft.

3 Bedroom, 2 Bath



PRIMARY BATH LINEN
CLOSET OPTION



ISLAND HOOD OPTION

 3 Bedrooms

 2 Bathrooms

 1,892 Sq. Ft.

 3 Car Garage

 459,997

- Interior Color Package: "Mountain Vogue". Comes with Stained Cabinets.
- Interior Walls/Trim: Walls - "Snowbound" , Trim - "Pure White"
- Exterior Color Package: Alpine Trail
- Light Fixtures: Acadia
- Doors: Standard Hardware. Cove knobs / Amador front door handle.
- Bathroom: Upgraded finishes in BLACK. Soaker Tub NOT included. All bathrooms. (Plumbing Fixtures, bath accessories and shower door hardware)
- Bathroom: Every Glass Shower Enclosure - Color Choice - "Clear Glass".
- Electrical: Tech Package Pre Wire - Includes Panel, 110 outlet, 1 Dual Wall Plate (Coax & Ethernet) in Great Room
- Windows Package: Optional Windows
- Ceilings: (Premier Series Only) Vault in Great Room and Coffered Ceiling in Primary Bedroom.
- Kitchen: Island Range/Hood. 30" PAINTED Cabinets. All Kitchen & Bath Cabs Painted. Sliding Window over the sink. (Premier/Origin Series)
- Cabinets: Specify Color of Knobs and Pulls
- Counters: Quartz Counters and Backsplash (6") in Kitchen
- Counters: Quartz Counters and Backsplash in Guest Bath(s)
- Counters: Quartz Counters and Backsplash in Primary Bath
- Exterior Covered Patio: Rear - 12x10
- Doors: Upgrade Kitchen Pantry Door. Glass - Frosted w/ Border.
- Garage: Garage Door Opener
- Garage: Garage Door Opener Wireless Keypad
- Garage: Third Car Garage
- HVAC: PreWire Only. For future Air Conditioner or Mini Split. Dedicated 220 Outlet.
- Fireplace: Electric Fireplace - Drywall Only w/ Mantle
- Kitchen: Farm Sink - Stainless Steel Single Bowl ****REQUIRES QUARTZ COUNTERTOPS****
- Kitchen or Laundry: Upgrade Faucet to Moen Arbor. SPECIFY Location(s) and Color. (Kitchen or Laundry. Black or Spot Resistant Stainless)