

Willowbrook

Charity Premier
LOT 124

406 NW Monte Vista Ave. Madras, OR 97741

3 Bedrooms

2 Bathrooms

1,892 Sq. Ft.

2 Car Garage

440,000

UNDER CONSTRUCTION



T - TRADITIONAL ELEVATION



The Charity stands out for how it uses its 1,892 square feet to balance openness with real-life versatility. A front bedroom sits just off the entry, making it a perfect home office, schoolroom, or dedicated play space separate from the main living areas. The second bedroom connects to the hallway bath, creating a comfortable second en suite for guests. At the heart of the home, the open kitchen, dining, and great room foster natural gatherings throughout the day. With its thoughtful layout and flexible spaces, the Charity supports a range of everyday moments with ease.

MonteVista
HOMES

541-234-8789

In a continual effort to improve our product, MonteVista Homes reserves the right to change product design, features, materials, floor plans, specifications, prices and terms without prior notice. Square footage stated or implied are approximate. Images may be representative of future home and show what's possible not what's included. Seller is a licensed real estate broker in the State of Oregon. CCB#203709



Willowbrook

Charity Premier LOT 124

406 NW Monte Vista Ave. Madras, OR 97741

🏠 3 Bedrooms

🚿 2 Bathrooms

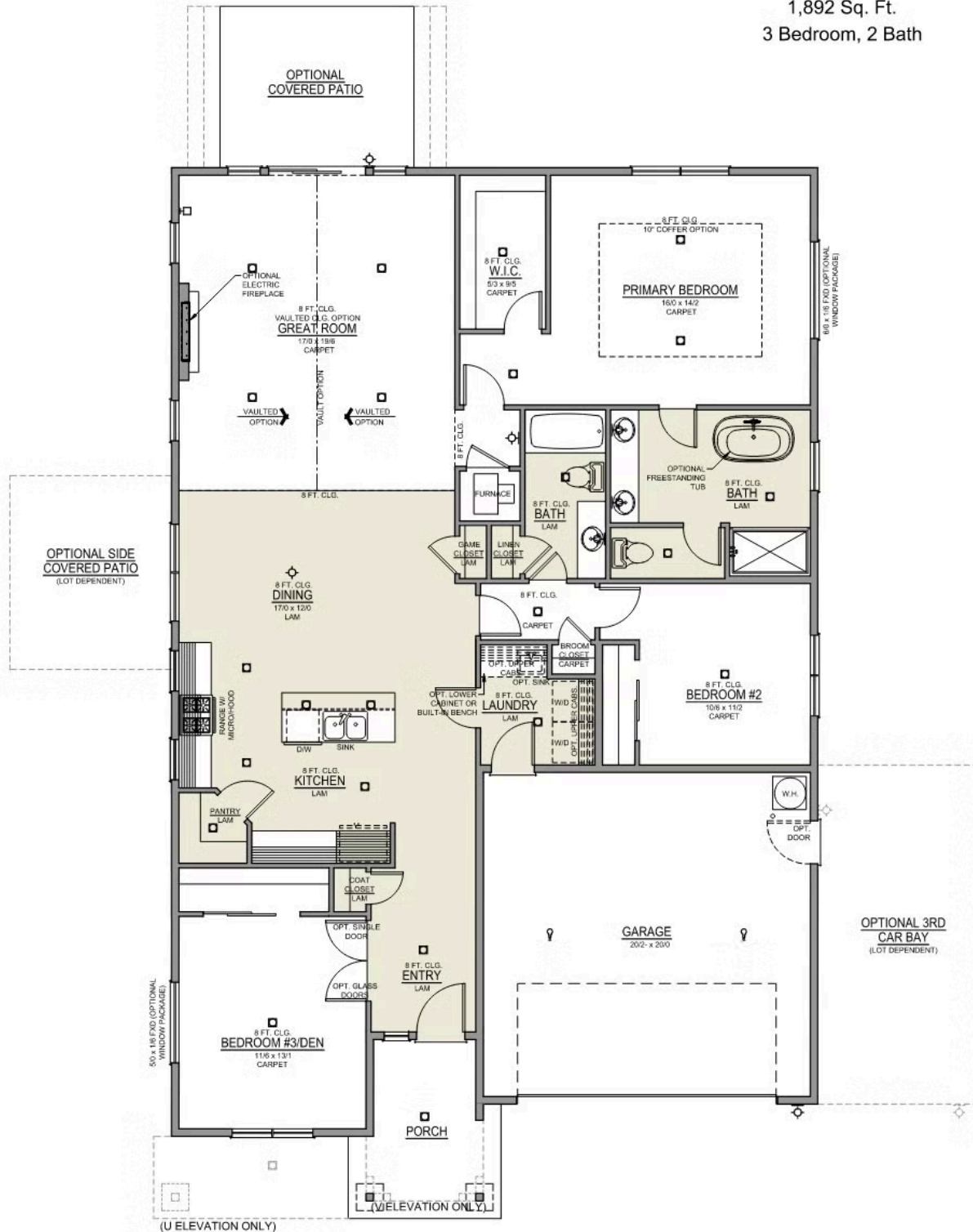
🏠 1,892 Sq. Ft.

🚗 2 Car Garage

💰 440,000

Charity 2-Car

1,892 Sq. Ft.
3 Bedroom, 2 Bath



 3 Bedrooms

 2 Bathrooms

 1,892 Sq. Ft.

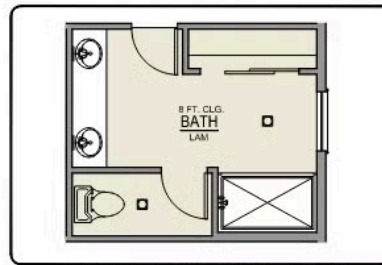
 2 Car Garage

 440,000

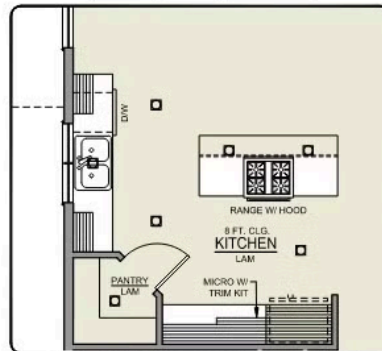
Charity 2-Car

1,892 Sq. Ft.

3 Bedroom, 2 Bath



PRIMARY BATH LINEN
CLOSET OPTION



ISLAND HOOD OPTION

 3 Bedrooms

 2 Bathrooms

 1,892 Sq. Ft.

 2 Car Garage

 440,000

- Interior Color Package: "Granite Shoreline". Painted Cabinets (All cabinets in house MUST be selected as "PAINTED")
- Exterior Color Package: Twilight Ridge
- Light Fixtures: Acadia
- Doors: Standard Hardware. Cove knobs / Amador front door handle.
- Bathroom: Upgraded finishes in SRS. Soaker Tub NOT included. All bathrooms. (Plumbing Fixtures, bath accessories and shower door hardware). *SRS = Spot Resistant Stainless.
- Bathroom: Shower Enclosure(s) Glass Color Choice
- Electrical: Tech Package Pre Wire - Includes Panel, 110 outlet, 1 Dual Wall Plate (Coax & Ethernet) in Great Room
- Windows Package: Optional Windows
- Ceilings: (Premier Series Only) Vault in Great Room and Coffered Ceiling in Primary Bedroom.
- Kitchen: 36" Cabinets. PAINTED Kitchen & Bathroom Cabinets.
- Cabinets: Specify Color of Knobs and Pulls
- Counters: Quartz Counters and Backsplash in Kitchen
- Counters: Quartz Counters and Backsplash in Guest Bath
- Counters: Quartz Counters and Backsplash in Primary Bath
- Exterior Covered Patio: Rear - 12x10
- Doors: Den - Double Doors upgrade to Full-Light Glass Double Doors.
- Bathroom: Linen Closet in Master Bath
- Doors: Kitchen Pantry Door w/ Glass (Frosted w/ Border).
- Flooring: Hallway Down - Wood Laminate (Casita Court)
- Garage: Garage Door Opener
- Garage: Garage Door Opener Wireless Keypad
- HVAC: PreWire Only. For future Air Conditioner or Mini Split. Dedicated 220 Outlet.
- Fireplace: Electric Fireplace - Drywall Only w/ Mantle
- Kitchen or Laundry Sink: Upgrade Faucet to Moen Arbor. SPECIFY Location(s) and Color (Kitchen or Laundry, and Black or Spot Resistant Stainless).