

Willowbrook

Charlotte
LOT 5

363 NW Monte Vista Ave. Madras, OR 97741

🏠 4 Bedrooms

🚿 2 Bathrooms

📏 1,701 Sq. Ft.

🚗 2 Car Garage

🏷️ 429,997

UNDER CONSTRUCTION



The Charlotte delivers a great combination of space and efficiency, offering four bedrooms in 1,701 square feet. The open kitchen, dining area, and great room form the home's central hub, inviting people to connect naturally throughout the day. Well-proportioned bedrooms give everyone room to spread out for rest, work, or hobbies without feeling closed in, and the layout lives larger than its footprint suggests.

MonteVista
HOMES

541-234-8789

In a continual effort to improve our product, MonteVista Homes reserves the right to change product design, features, materials, floor plans, specifications, prices and terms without prior notice. Square footage stated or implied are approximate. Images may be representative of future home and show what's possible not what's included. Seller is a licensed real estate broker in the State of Oregon. CCB#203709



Willowbrook

Charlotte
LOT 5

363 NW Monte Vista Ave. Madras, OR 97741

🛏 4 Bedrooms

🚿 2 Bathrooms

🏠 1,701 Sq. Ft.

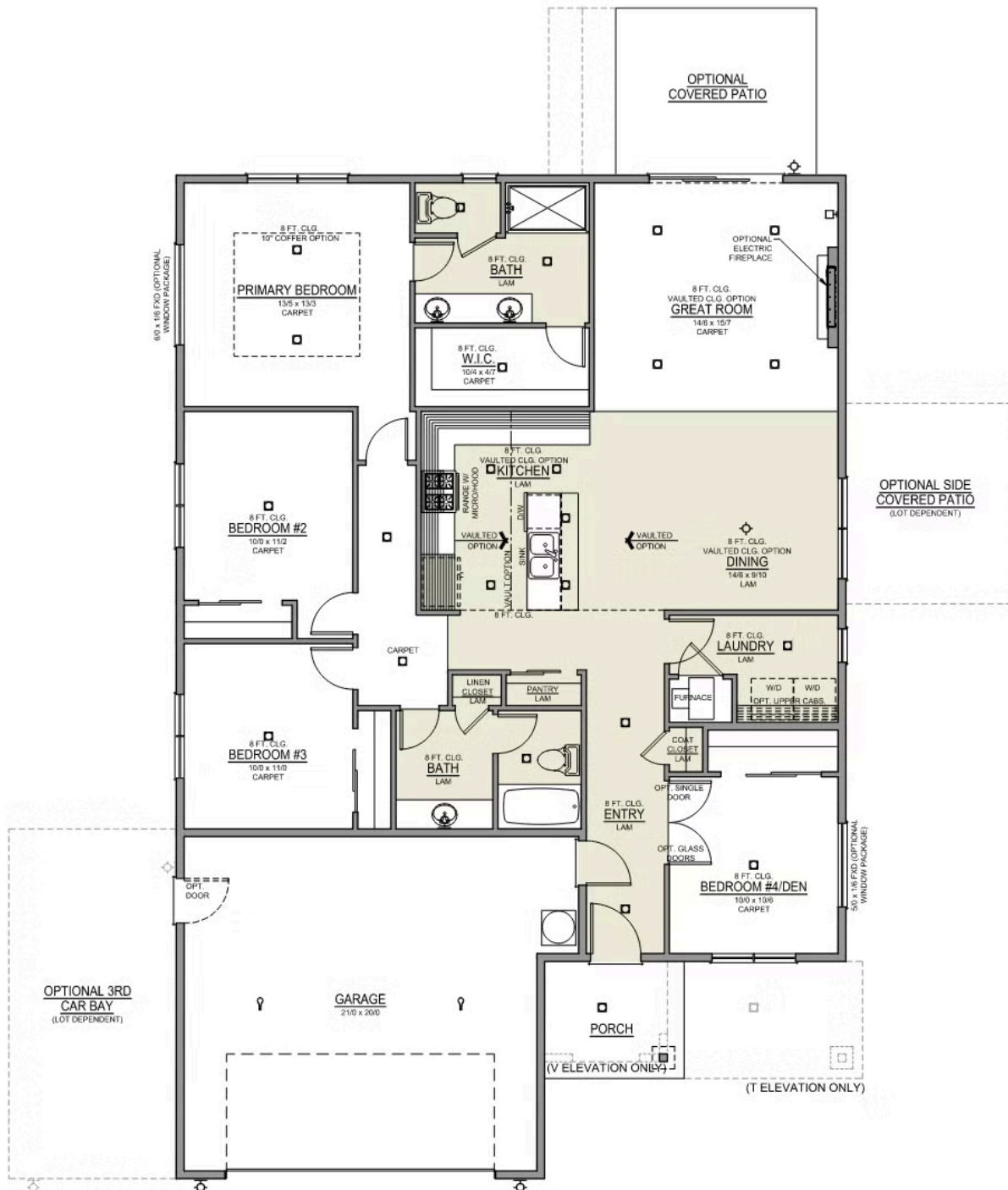
🚗 2 Car Garage

🏷 429,997

Charlotte 2-Car

1,701 Sq. Ft.

4 Bedroom, 2 Bath



 4 Bedrooms

 2 Bathrooms

 1,701 Sq. Ft.

 2 Car Garage

 429,997

- Interior Color Package: "Granite Shoreline". Comes with Stained Cabinets.
- Interior Walls/Trim: Walls - "Snowbound" , Trim - "Pure White"
- Exterior Color Package: Spring Mist
- Light Fixtures: Acadia
- Doors: Standard Hardware. Cove knobs / Amador front door handle.
- Bathroom: Upgraded finishes in BLACK. Soaker Tub NOT included. All bathrooms. (Plumbing Fixtures, bath accessories and shower door hardware)
- Bathroom: Every Glass Shower Enclosure - Color Choice - "Clear Glass".
- Electrical: Tech Package Pre Wire - Includes Panel, 110 outlet, 1 Dual Wall Plate (Coax & Ethernet) in Great Room
- Windows Package: Optional Windows
- Ceilings: (Premier Series Only) Vault in Great Room and Coffered Ceiling in Primary Bedroom.
- Kitchen: Wall Range. 30" PAINTED Cabinets. All Kitchen & Bath Cabs Painted. (Premier/Origin: Upgrade Kitchen Cabs to Painted. Distinct: Not Available)
- Cabinets: Specify Color of Knobs and Pulls
- Counters: Quartz Counters and Backsplash (6") in Kitchen
- Counters: Quartz Counters and Backsplash in Guest Bath(s)
- Counters: Quartz Counters and Backsplash in Primary Bath
- Electrical: Surface Mount LEDs. Add 2 for 4 total + Dimmer switch. For Primary Bedroom (N/A for Florence).
- Fencing: Cedar, Dog-eared, 6' tall. (50 ft Min. Order)
- Garage: Garage Door Opener
- Garage: Garage Door Opener Wireless Keypad
- HVAC: PreWire Only. For future Air Conditioner or Mini Split. Dedicated 220 Outlet.
- Fireplace: Electric Fireplace - Drywall Only w/ Mantle
- Kitchen: Farm Sink - Stainless Steel Single Bowl ****REQUIRES QUARTZ COUNTERTOPS****
- Kitchen or Laundry: Upgrade Faucet to Moen Arbor. SPECIFY Location(s) and Color. (Kitchen or Laundry. Black or Spot Resistant Stainless)