

Willowbrook

Hope Premier
LOT 137

1433 NW Willow Parkway R Madras, OR 97741

4 Bedrooms 2 Bathrooms 1,906 Sq. Ft. 3 Car Garage 449,990

UNDER CONSTRUCTION



U - CRAFTSMAN



- Kitchen Island with Sink
- Kitchen Pantry
- Great Room with Fireplace
- Quartz Countertops throughout Home

- Free Standing Tub
- Primary Bedroom with Walk-in Closet
- Stainless Steel Appliances

MonteVista
HOMES

541-234-8789

In a continual effort to improve our product, MonteVista Homes reserves the right to change product design, features, materials, floor plans, specifications, prices and terms without prior notice. Square footage stated or implied are approximate. Images may be representative of future home and show what's possible not what's included. Seller is a licensed real estate broker in the State of Oregon. CCB#203709



Hope Premier
LOT 137


1433 NW Willow Parkway R Madras, OR 97741

 4 Bedrooms

 2 Bathrooms

 1,906 Sq. Ft.

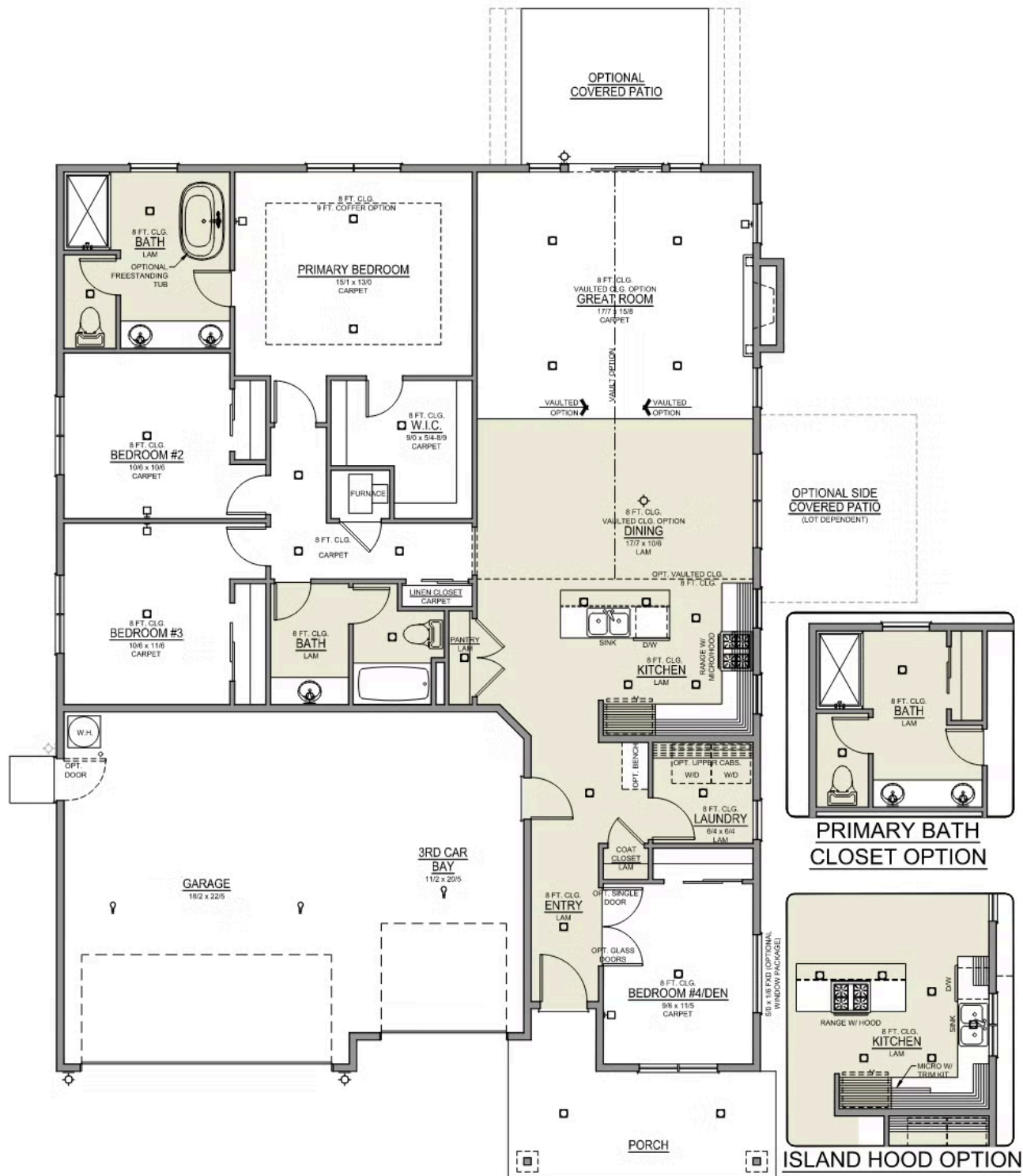
 3 Car Garage

 449,990

Hope 3-Car

1,906 Sq. Ft.

4 Bedroom, 2 Bath



Willowbrook

OPTIONS

Hope Premier
LOT 137

1433 NW Willow Parkway R Madras, OR 97741

 4 Bedrooms  2 Bathrooms  1,906 Sq. Ft.  3 Car Garage  449,990

- Interior Color Package: "Horizon Pine"
- Exterior Color Package: Timberline Meadows
- Light Fixtures: Acadia
- Doors: Hardware Standard. "Cove" knobs / "Amador" front door handle.
- Bathroom: Upgraded finishes in SRS. Soaker Tub INCLUDED. All bathrooms. (Plumbing Fixtures, bath accessories and shower door hardware). *SRS = Spot Resistant Stainless.
- Bathroom: Shower Enclosure(s) Glass Color Choice
- Electrical: Tech Package Pre Wire - Includes Panel, 110 outlet, 1 Dual Wall Plate (Coax & Ethernet) in Great Room
- Windows Package: Optional Windows
- Ceilings: (Premier Series Only) Vault in Great Room and Coffered Ceiling in Primary Bedroom.
- Kitchen: 36" Cabinets.
- Cabinets: Specify Color of Knobs and Pulls
- Counters: Quartz Counters and Backsplash in Kitchen
- Counters: Quartz Counters and Backsplash in Guest Bath
- Counters: Quartz Counters and Backsplash in Primary Bath
- Kitchen: Pendant Lights over Kitchen Island - In place of recessed LED
- Garage: Garage Door Opener
- Garage: Garage Door Opener Wireless Keypad
- HVAC: Air Conditioner PreWire. Dedicated 220 Outlet (For AC or Mini Split)
- Fireplace: Gas Fireplace (Direct Vent) with Mantel and Stone Surround
- Kitchen: Farm Sink - Stainless Steel Single Bowl
REQUIRES QUARTZ COUNTERTOPS
- Kitchen or Laundry Sink: Upgrade Faucet to Moen Arbor. SPECIFY Location(s) and Color (Kitchen or Laundry, and Black or Spot Resistant Stainless).
- Bathroom: Freestanding Soaker Tub

MonteVista
HOMES

541-234-8789

In a continual effort to improve our product, MonteVista Homes reserves the right to change product design, features, materials, floor plans, specifications, prices and terms without prior notice. Square footage stated or implied are approximate. Images may be representative of future home and show what's possible not what's included. Seller is a licensed real estate broker in the State of Oregon. CCB#203709

